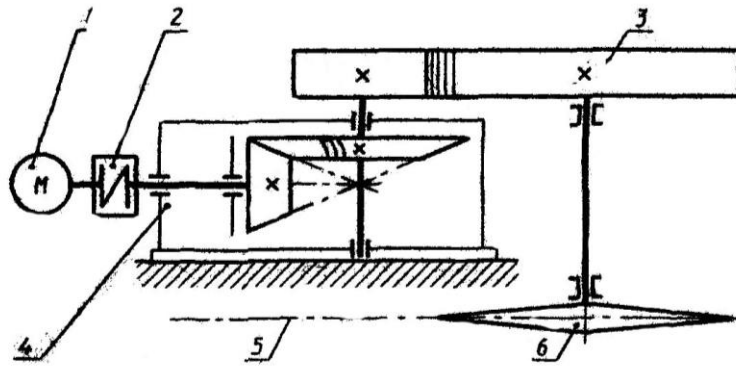


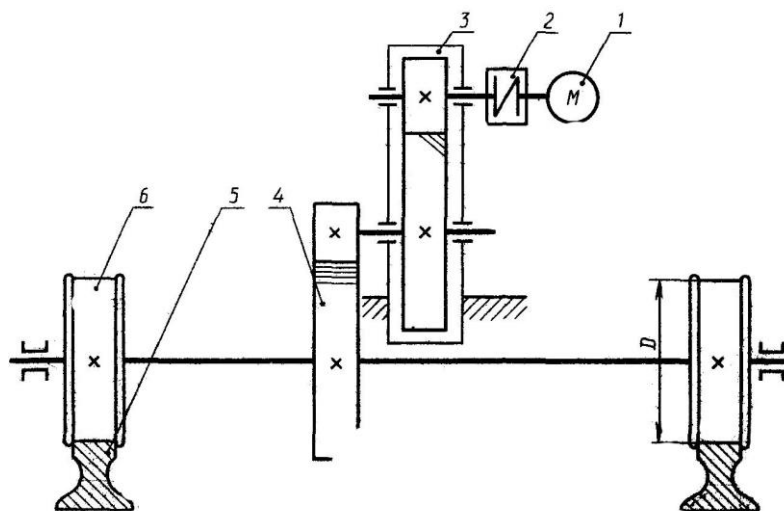
topshiriq №1
Osma konveyr yuritmasi



- 1 - dvigatel; 2 – yelastiksimon yulduzchali mufta; 3 – tsilindrsimon tishli g‘ildirak;
4 – konussimon yopiq uzatma; 5 - zanjir; 6 – yulduzcha

Berilgan qiymatlari	Variantlar									
	1	2	3	4	5	6	7	8	9	10
Aylanma kuch F , kN	3,0	3,4	3,8	4,0	4,2	4,6	4,8	5,0	5,2	5,5
Zanjirning tezligi v , m/s	0,55	0,6 0	0,6 5	0,6 0	0,6 5	0,6 5	0,6 0	0,6 5	0,5 5	0,6 3
Yulduzcha tishining qadami r , mm	80	80	100	80	10 0	80	80	10 0	80	100
Yulduzcha tishlari soni z	7	9	8	7	9	8	8	9	7	8

topshiriq №2
Ko‘priqli kran yuritmasi

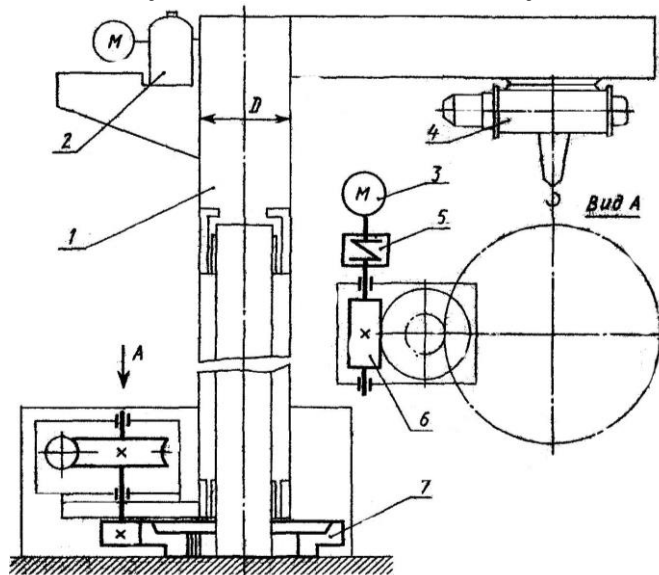


- 1-dvigatel; 2-mufta; 3-tsilindrsimon yopiq uzatma; 4-ochiq tsilindrsimon uzatma;
5-reis;
6-g‘ildirak

Berilgan qiymatlari	Variantlar									
	1	2	3	4	5	6	7	8	9	10
Ko'prik xarakatiga qarshilik kuch F , kN	1,5	2,0	2,5	3,0	2,0	3,0	1,5	2,5	2,5	3,5
Ko'prik tezligi v , m/s	1,0 0	1,3 5	1,6 5	1,0 0	2,0 0	1,3 5	1,6 5	2,0 0	1,0 0	1,6 5
G'ildirak diametri D , mm	200	300	400	300	50 0	40 0	60 0	70 0	40 0	500

topshiriq №3

Kranni aylantiruvchi mexanizm yuritmasi

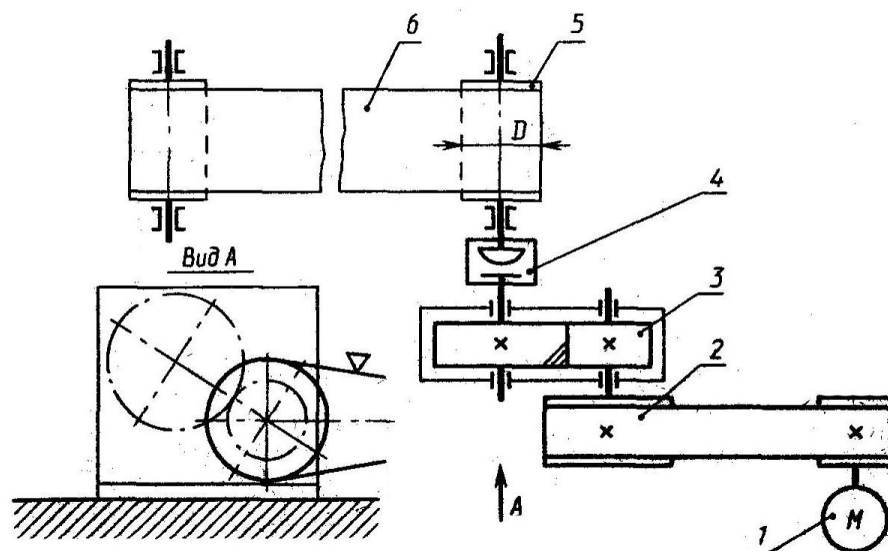


- 1 – aylanuvchi kolonna; 2 – moslama xolatini o'zgartiruvchi mexanizm; 3 – dvigatel;
 4 – ko'tarish mexanizmi; 5 – yelastiksimon yulduzchali mufta ; 6 – chervyakli uzatma;
 7 – tsilindsimon tishli uzatma

Berilgan qiymatlari	Variantlar									
	1	2	3	4	5	6	7	8	9	10
Qarshilik momenti F , kN m	1,0	1,3	1,5	1,7	1,9	2,0	2,4	2,6	2,8	3,0
Buralish tezligi v , m/s	0,0 6	0,0 6	0,0 7	0,0 7	0,0 8	0,0 8	0,1 0	0,1 4	0,1 6	0,1 8
Kolonna diametri D , mm	300	300	350	350	42 0	42 0	50 0	60 0	60 0	750

topshiriq №4

Lentali konveyr yuritmasi

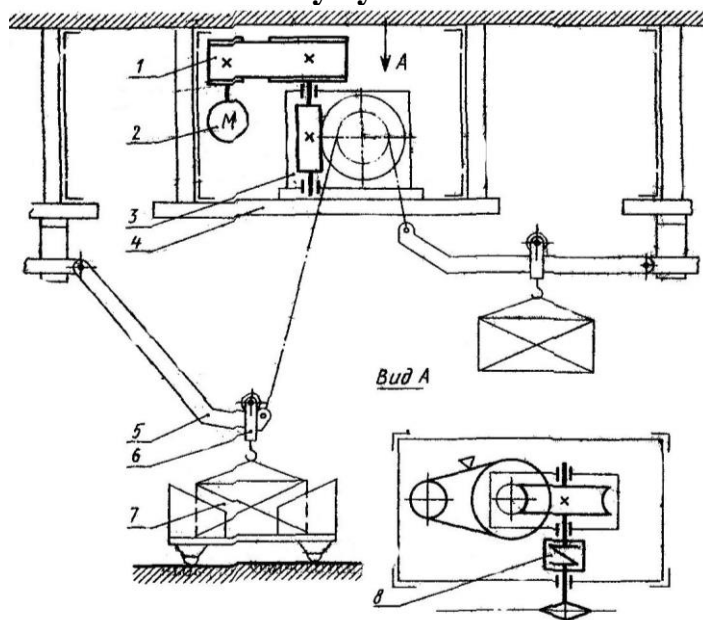


1-dvigatel; 2-tasmali uzatma; 3-tsilindrsimon reduktor;
4-zanjirli mufta; 5-baraban; 6-konveyr lentasi.

Berilgan qiymatlari	Variantlar									
	1	2	3	4	5	6	7	8	9	10
Lentali aylanma kuch F , kN	1,2	1,6	1,8	2,0	2,2	2,4	2,6	2,8	3,0	3,2
Yuk ko'tarish tezligi v , m/s	0,8	0,9	1,0	1,1	1,1	1,2	1,2	1,3	1,4	1,5
Diametr barabana D , mm	200	200	225	225	250	250	275	275	250	290

topshiriq №5

Konveyr yuritmasi



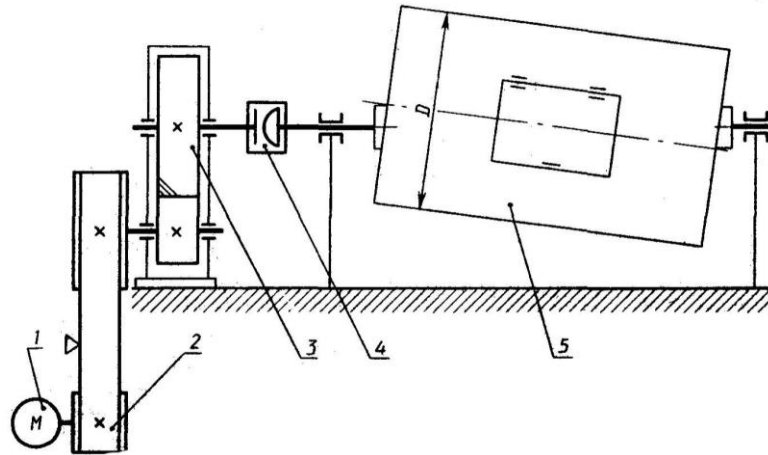
1 – Tasmali uzatma; 2 – dvigatel; 3 – chervyakli reduktor;
4 – tortuvchi zanjir; 5 – ko'taruvchi monorels; 6 – ushlab turgich; 7-yuk; 8- mufta

Berilgan qiymatlari	Variantlar									
	1	2	3	4	5	6	7	8	9	10

Yuk ko'taruvchanligi F , kN	0,8	1,0	1,2	1,5	1,8	1,5	1,7	1,9	2,0	2,2
Yuk ko'tarish tezligi v , m/s	0,5 0	0,55	0,60	0,65	0,5 5	0,6 0	0,6 5	0,7 0	0,7 5	0,80
Yulduzcha qadami r , mm	100	125	80	150	10 0	12 5	10 0	12 5	15 0	100
Yulduzcha tishlar soni z	10	9	12	7	11	8	10	9	7	11

topshiriq №6

Shtampovkadan keyin detallarni qirralarni tozalash barabani yuritmasi



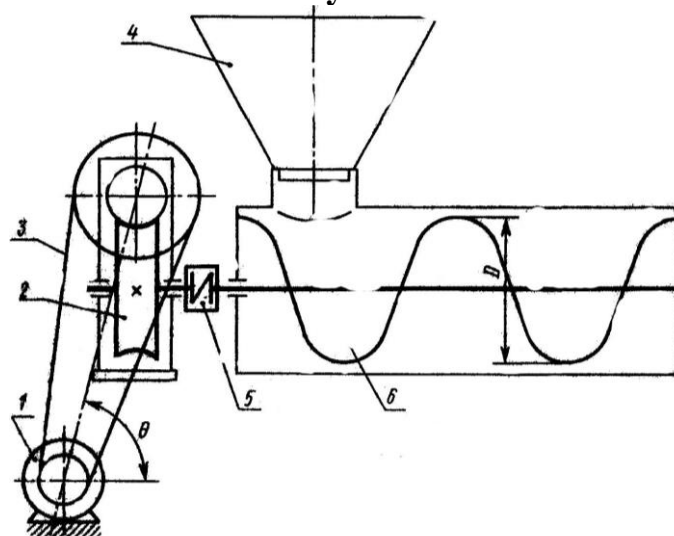
1 – dvigatel; 2 – yarim ponali tasmasli uzatma; 3 – qiya tishli tsilindsimon reduktor;

4 – zanjirli mufta; 5 – baraban

Berilgan qiymatlari	Variantlar									
	1	2	3	4	5	6	7	8	9	10
Barabandagi aylanma kuch F , kN	0,5	0,8	1,0	1,0	0,7	0,8	0,9	1,1	1,2	0,5
Baraban tezligi v , m/s	2,0	2,5	2,0	2,5	3,5	3,0	3,0	2,5	2,0	3,0
Baraban tezligi D , mm	400	400	600	600	80 0	86 0	90 0	90 0	80 0	800

topshiriq №7

Shnek yuritmasi

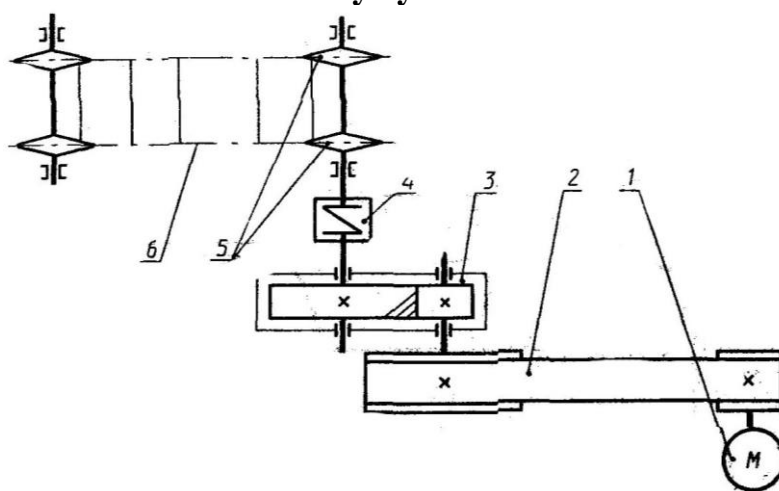


1-dvigatel; 2-chervyakli reduktor; 3-tasmali uzatma;
4-bunker; 5-mufta; 6-vintli konveyr.

Berilgan qiymatlari	Variantlar									
	1	2	3	4	5	6	7	8	9	10
Shnekdagi aylanma kuch F , kN	1,1	1,3	1,5	1,8	2,0	2,2	2,5	2,7	2,9	3,0
Maxsulotni xarakat tezligi v , m/s	0,8	0,9	1,1	1,3	1,2	1,0	1,1	0,9	1,3	1,2
Shnekni tashqi diametri D , mm	400	400	450	550	500	500	550	550	500	450
Tasmali uzatmani qiyalik burchagi θ , rad	45	30	60	45	45	60	30	45	60	30

topshiriq №8

Konveyr yuritmasi

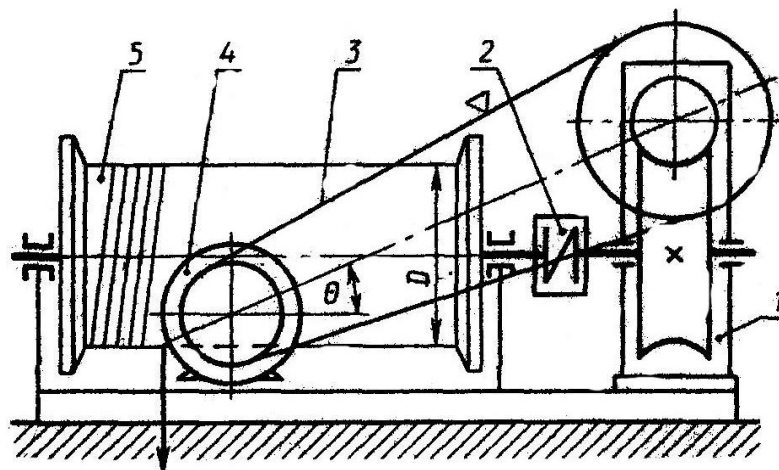


1 – dvigatel; 2 – yassi tasmali uzatma; 3 – qiya tishli tsilindrsimon reduktor;
4 – mufta; 5– konveyrni etaklovchi yulduzchasi; 6- konveyr zanjiri

Berilgan qiymatlari	Variantlar									
	1	2	3	4	5	6	7	8	9	10
Zanjirli konveyrdagi aylanma kuch F , kN	2,0	2,4	2,6	2,8	3,0	3,5	3,7	4,0	4,4	4,8
Zanjirli konveyr tezligi v , m/s	0,5	0,6	0,6	0,5	0,5	0,6	0,6	0,5	0,6	0,6
Zanjir qadami r , mm	80	100	100	80	80	100	80	80	100	80
Yulduzcha tishlari soni z	7	8	7	8	9	7	9	7	7	8

topshiriq №9

Elektrik lebedka yuritmasi

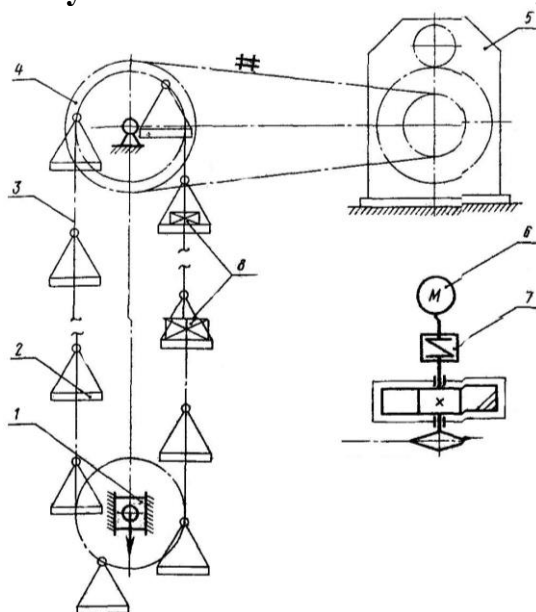


1 – chervyakli reduktor; 2 – mufta; 3 – ponasimon tasmali uzatma; 4 – dvigatel;
5 – baraban

Berilgan qiymatlari	Variantlar									
	1	2	3	4	5	6	7	8	9	10
Lebedkani yuk ko'taruvchanligi F , kN	1,0	1,5	1,8	2,0	2,5	2,8	3,0	3,2	3,5	4,0
Yuk ko'tarish tezligi v , m/s	0,1 7	0,20	0,25	0,26	0,2 7	0,2 0	0,2 7	0,2 5	0,2 3	0,20
Baraban diametri D , mm	200	200	250	250	300	30 0	35 0	35 0	30 0	250
Tasmali uzatmani qiyalik burchagi θ , grad	60	60	30	45	30	45	60	30	45	45

topshiriq №10

Qavatlararo yukni ko'taruvchi mexanizm yuritmasi



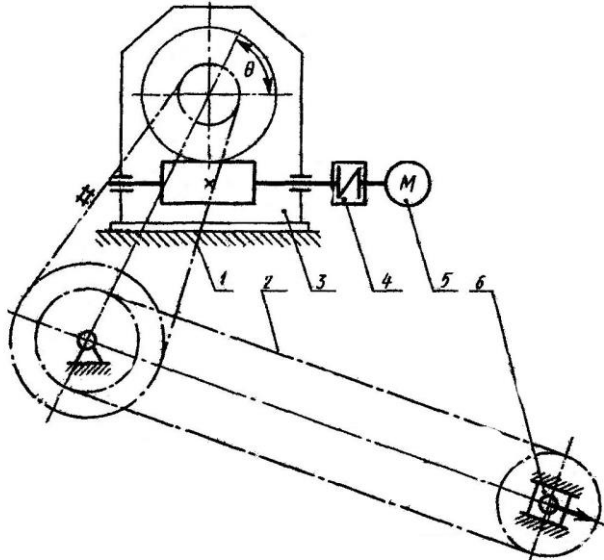
1 – taranglovchi moslama; 2 – lyulka; 3 – tortuvchi zanjir; 4 – zanjirli uzatma;
5 – tsilindrsimon reduktor; 6- dvigatel; 7- mufta; 8- yuk

Berilgan qiymatlari	Variantlar									
	1	2	3	4	5	6	7	8	9	10

Zanjirli konveyrdagi aylanma kuch F , kN	1,5	2,0	2,5	2,8	3,0	2,0	2,0	13	1,5	1,6
Zanjirli konveyr tezligi v , m/s	0,9	1,0	1,1	1,2	1,3	1,4	1,5	1,6	1,7	1,8
Zanjir qadasi r , mm	100	125	125	80	80	100	125	150	100	150
Yulduzcha tishlar soni z	7	8	7	9	11	10	10	7	8	9

topshiriq №11

Qavatlararo yukni ko'taruvchi mexanizm yuritmasi

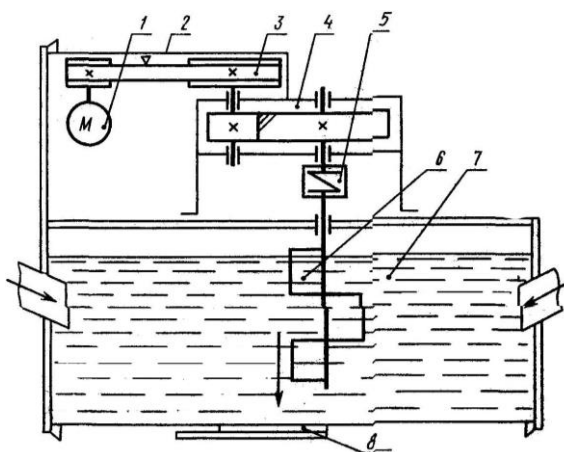


1 – zanjirli uzatma; 2– konveyr; 3 – chervyakli reduktor;
4- mufta; 5- dvigatel; 6- taranglovchi moslama

Berilgan qiymatlari	Variantlar									
	1	2	3	4	5	6	7	8	9	10
Zanjirli konveyrdagi aylanma kuch F , kN	5	6	7	8	3	4	5	13	10	6
Zanjirli konveyr tezligi v , m/s	0,20	0,25	0,30	0,35	0,40	0,45	0,35	0,25	0,30	0,40
Zanjir qadasi r , mm	80	100	125	150	80	80	100	150	125	100
Yulduzcha tishlar soni z	8	9	10	7	10	11	8	12	9	11
Tasmali uzatma qiyalik burchagi θ , grad	30	45	60	45	30	60	60	45	30	60

topshiriq №12

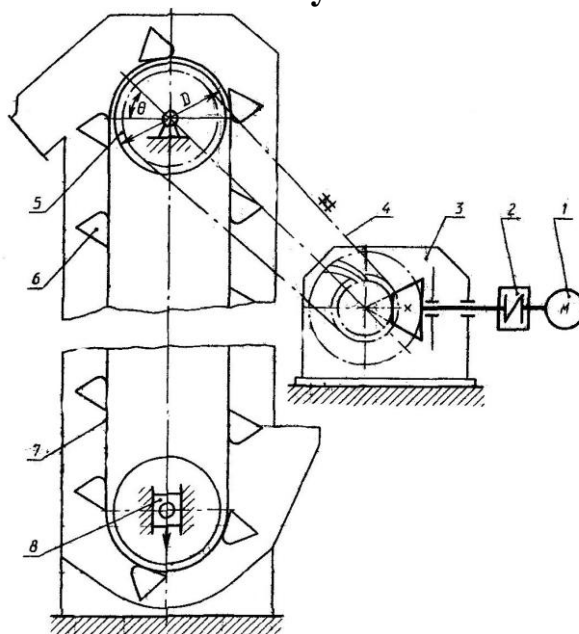
Qorishmani harakatlantiruvchi mexanizm yuritmasi



1- dvigatel; 2 – to‘siq; 3– ponasimon tasmali uzatma; 4 – qiya tishli tsilndrsimon reduktor; 5- mufta; 6-qorishtiruvchi; 7-qorishma; 8-siljituvchi

Berilgan qiymatlari	Variantlar									
	1	2	3	4	5	6	7	8	9	10
Aylanma qarshilik momenti T , kN m	0,1	0,1	0,2	0,2	0,2	0,3	0,3	0,3	0,3	6,46
Aylanuvchi yelementni aylanish soni n , ob/min	60	65	70	75	80	70	65	60	70	80

topshiriq №13 Elevator yuritmasi



1-dvigatel; 2-mufta; 3-konussimon reduktor; 4-zanjirli uzatma; 5-baraban; 6-kovsh;

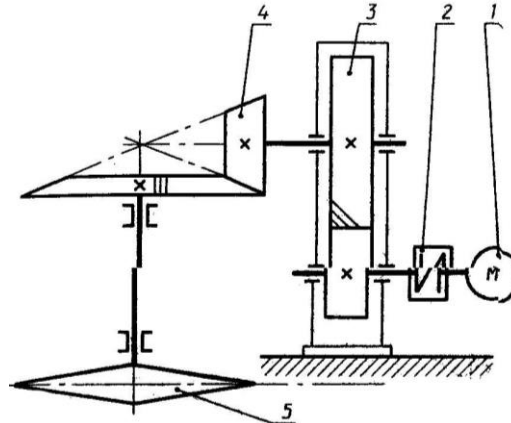
7-lentali konveyr; 8-taranglovchi moslama.

Berilgan qiymatlari	Variantlar									
	1	2	3	4	5	6	7	8	9	10
Zanjirdagi aylanma kuch F , kN	1,0	1,3	1,5	1,5	1,8	1,9	2,0	2,2	2,6	2,8

Lentaning tezligi v , m/s	0,8	0,9	1,0	1,1	1,2	1,3	1,4	1,5	1,6	1,7
Baraban diametri D , mm	250	250	275	275	300	250	275	275	250	300
Zanjirli uzatma qiyalik burchagi θ , grad	30	45	30	60	45	45	60	30	30	45

topshiriq №14

Osma konveyr yuritmasi

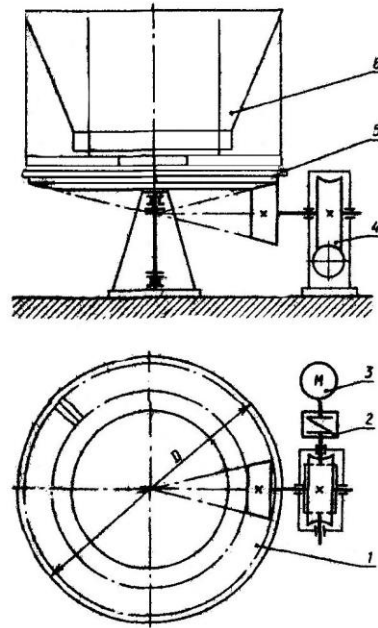


1-dvigatel; 2-mufta; 3-tsilindsimon reduktor; 4-ochiq konussimon uzatma; 5-konveyr yulduzchasi.

Berilgan qiymatlari	Variantlar									
	1	2	3	4	5	6	7	8	9	10
Zanjirdagi aylanma kuch F , kN	2,0	3,0	3,0	4,0	5,0	5,5	6,0	6,5	7,0	7,5
Zanjirli konveyr tezligi v , m/s	0,45	0,45	0,50	0,50	0,50	0,50	0,60	0,60	0,60	0,60
Zanjir qadami r , mm	80	80	100	100	125	80	125	100	100	80
Yulduzchani tishlar soni z	7	8	9	8	8	9	7	7	9	7'

topshiriq №15

Shakllantiruvchi mexanizm yuritmasi

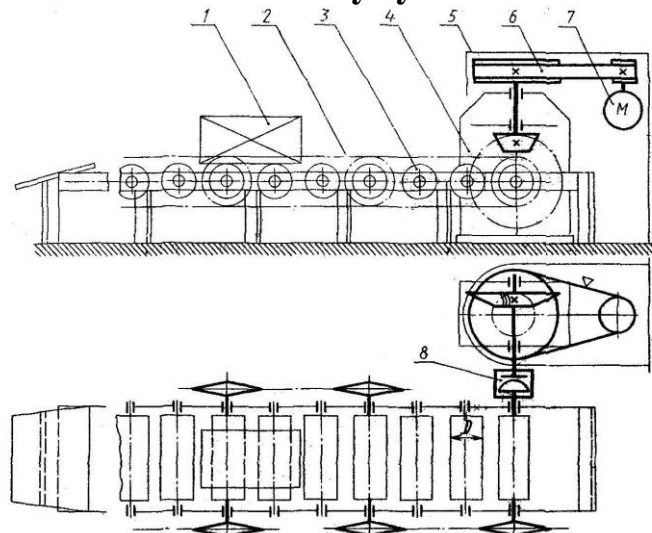


1 – konussimon tishli uzatma; 2- mufta; 3- dvigatel;
4 – chervyakli reduktor; 5– ta`minlovchi disk; 6– yuklangan bunker

Berilgan qiymatlari	Variantlar									
	1	2	3	4	5	6	7	8	9	10
Diskdagi aylanali kuch F , kN	1,5	2,0	2,5	3,0	3,0	3,5	3,5	4,0	4,0	4,5
Tuproqni uzatish tezligi v , m/s	0,5 5	0,60	0,65	0,70	0,7 5	0,8 0	0,8 5	0,9 0	0,9 5	1,00
Disk diametri D , mm	700	750	800	800	900	100 0	100 0	90 0	90 0	100 0

topshiriq №16

Rolikli konveyr yuritmasi



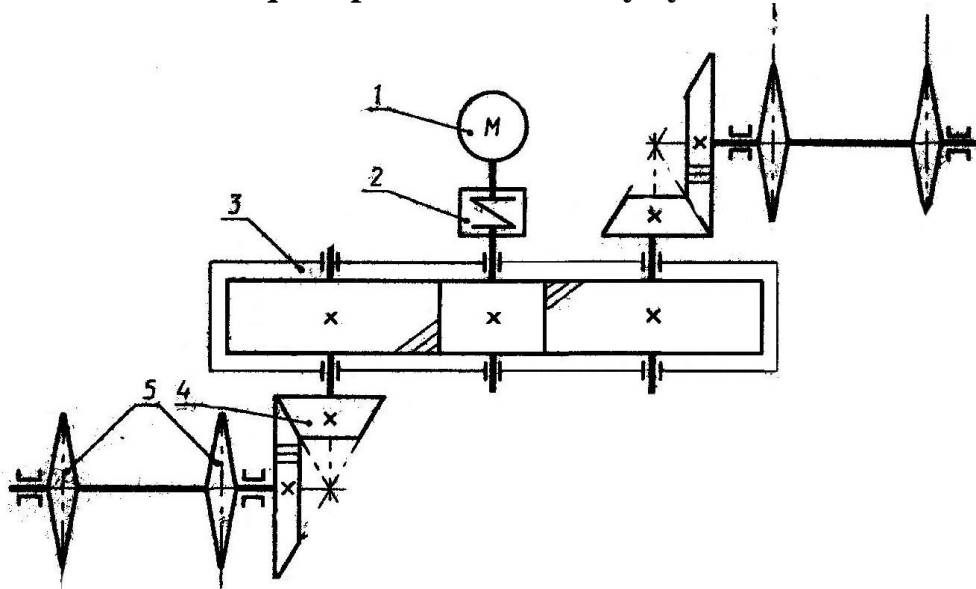
1 – yuk; 2-konveyr zanjiri; 3- rolik; 4 – konussimon reduktor; 5– to`siq;
6– yassi tasmali uzatma; 7 – dvigatel; 8- mufta

Berilgan qiymatlari	Variantlar									
	1	2	3	4	5	6	7	8	9	10
Rolikdagi aylanma kuch	2,0	2,5	3,0	3,4	3,8	4,1	4,4	4,6	5,0	5,2

$F, \text{ kN}$										
Yukni siljish tezligi $v, \text{ m/s}$	0,6 0	0,6 5	0,7 0	0,7 5	0,8 0	0,8 2	0,8 5	0,9 0	0,9 5	1,00
Rolik diametri $D, \text{ mm}$	80	85	90	95	100	110	120	130	140	150

topshiriq №17

Ikki oqimli plastinkali konveyr yuritmasi



1 – dvigatel; 2- mufta; 3- qiya tishli tsilindrsimon reduktor;
4 – konussimon tishli uzatma; 5 – konveyr yulduzchasi

Berilgan qiymatlari	Variantlar									
	1	2	3	4	5	6	7	8	9	10
Bitta konveyrni tortish kuchi $F, \text{ kN}$	3,0	3,5	4,0	4,5	5,0	5,0	5,5	6,0	6,0	6,5
Zanjirni tezligi $v, \text{ m/s}$	0,4 5	0,50	0,60	0,65	0,5 5	0,6 5	0,6 0	0,4 5	0,5 0	0,65
Zanjirni qadami $r, \text{ mm}$	80	80	100	80	100	100	80	80	100	100
Yulduzchani tishlar soni z	7	10	9	11	9	8	10	7	8	9