

WEEK 11:

Enterprise Applications :

- Supply Chain Management
- Customer Relationship Management

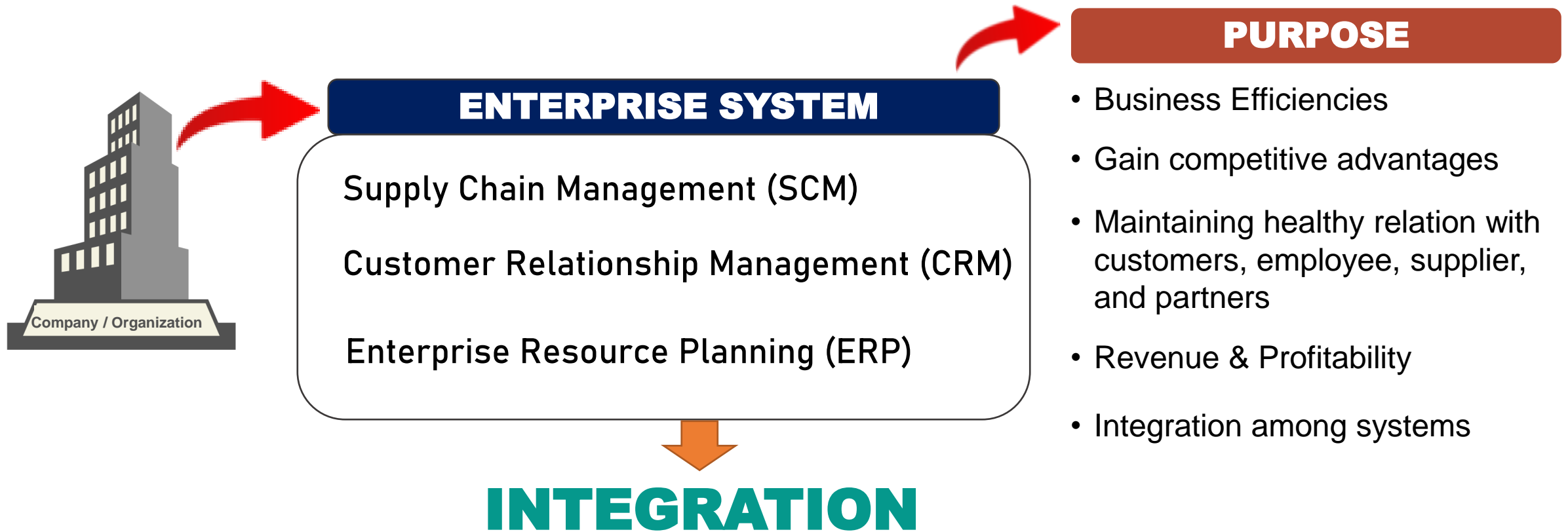


MIS

Management
Information
System

LECTURER: Sam Yuan Permadi, M.Sc

OUR FOCUS



Integration Allows separate systems to communicate directly with each other, eliminating the need for manual entry into multiple systems (Baltzan, 2020).

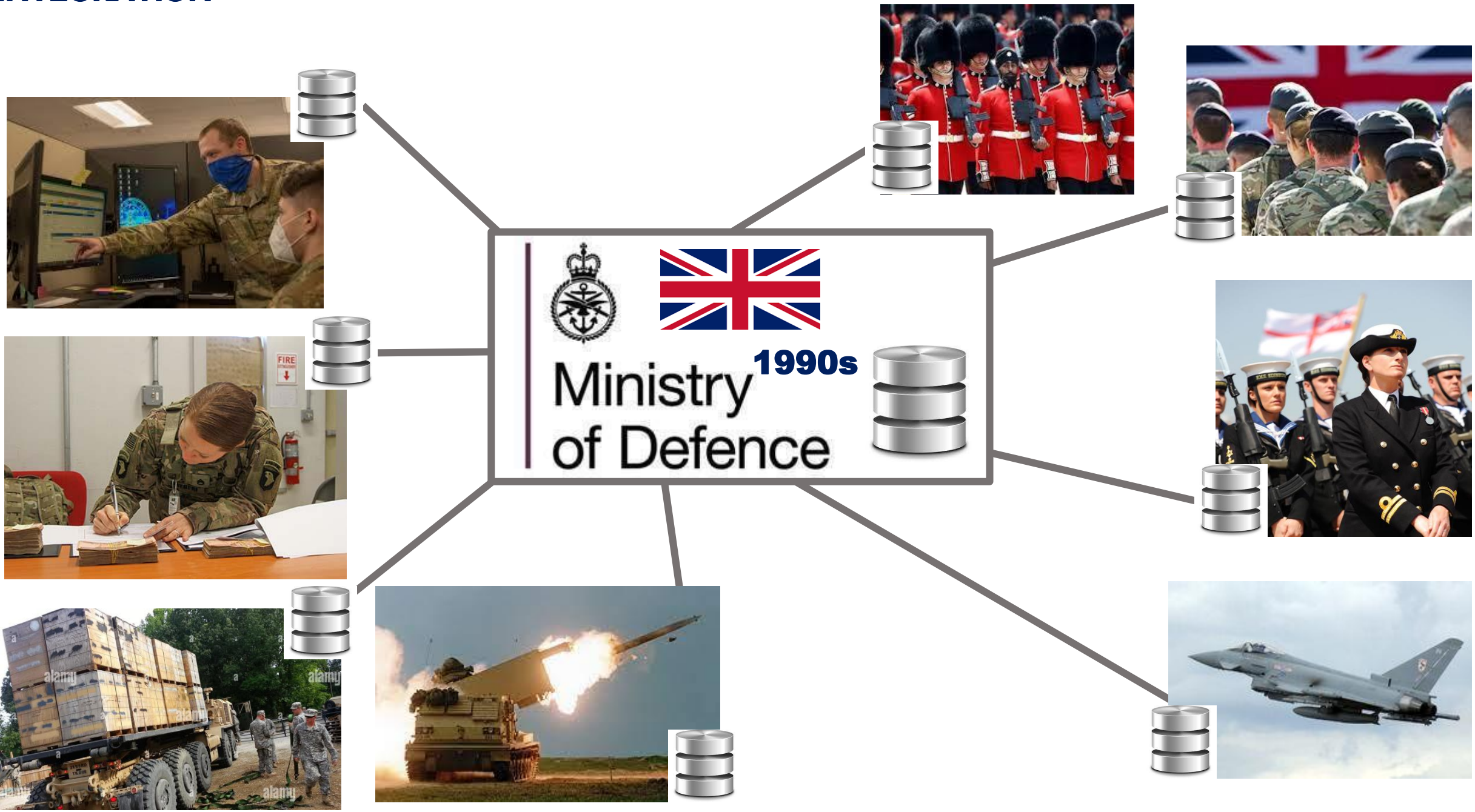
INTEGRATION




Ministry **1990s**
of Defence



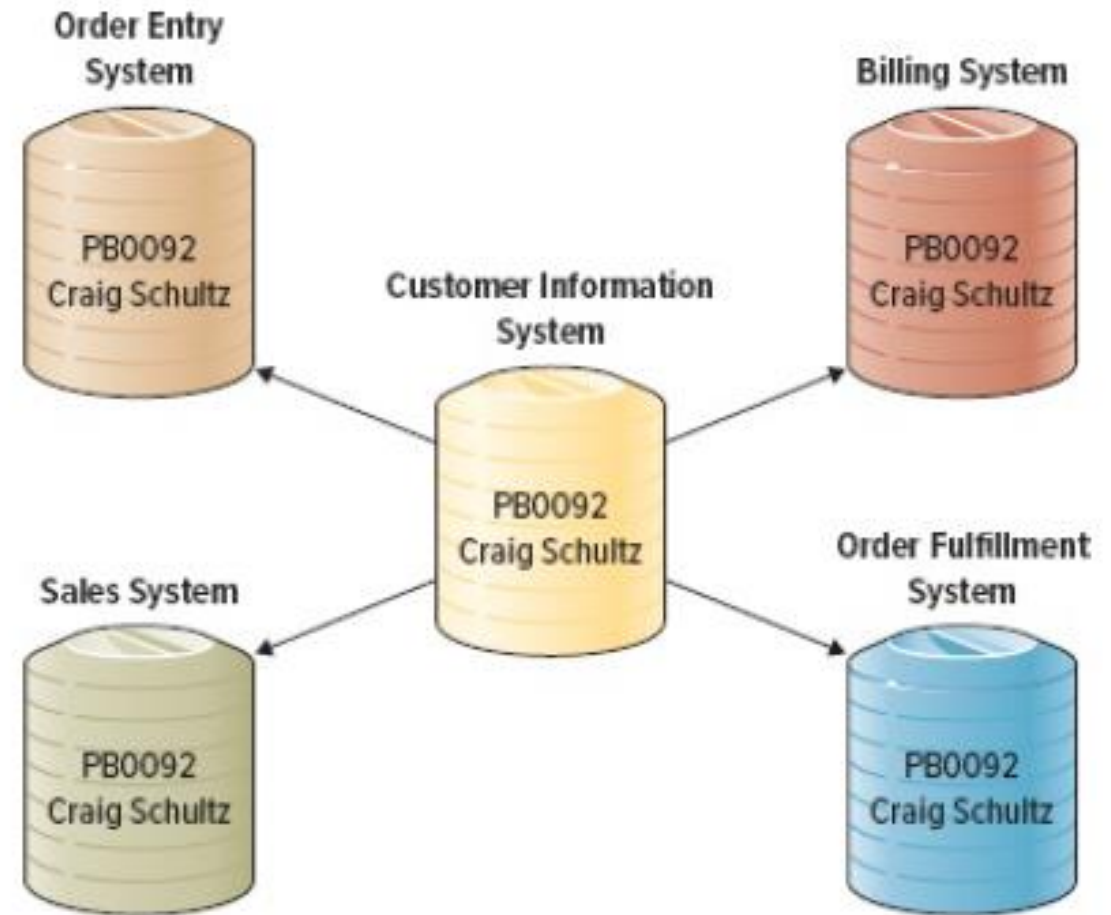
INTEGRATION



Integration Allows separate systems to communicate directly with each other, eliminating the need for manual entry into multiple systems (Baltzan, 2020).

Common data repository Allows every department of a company to store and retrieve data in real-time allowing data to be more reliable and accessible (Baltzan, 2020). → also known as **Data Lake**

A **Data Warehousing** (DW) is process for collecting and managing data from varied sources to provide meaningful business insights. The data warehouse is the core of the BI system which is built for data analysis and reporting. (Rungta, 2022)



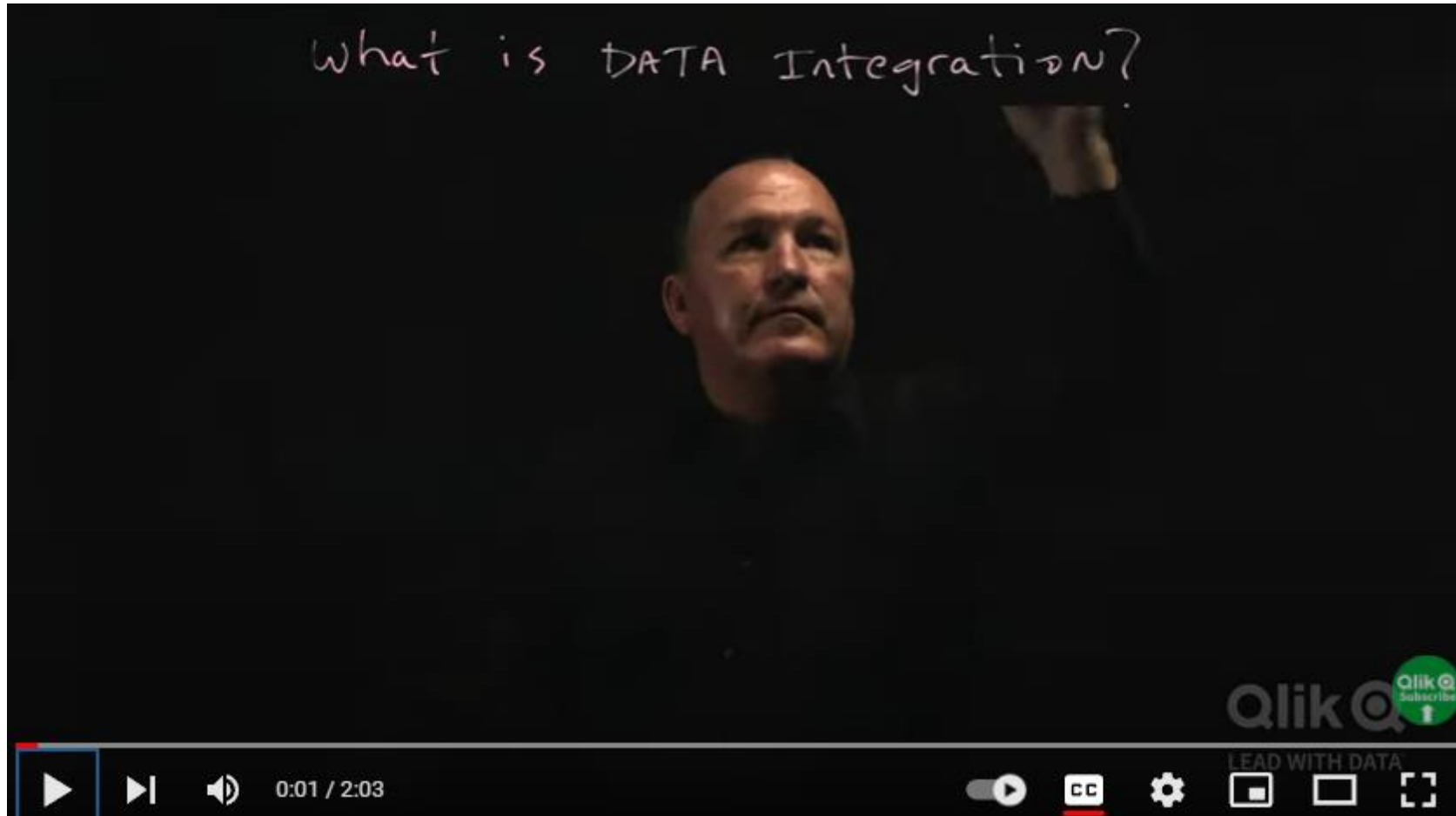
ANYTIME, ANYWHERE, LESS COST, LESS RESOURCE (TIME, ENERGY, ETC)

Learning from Video

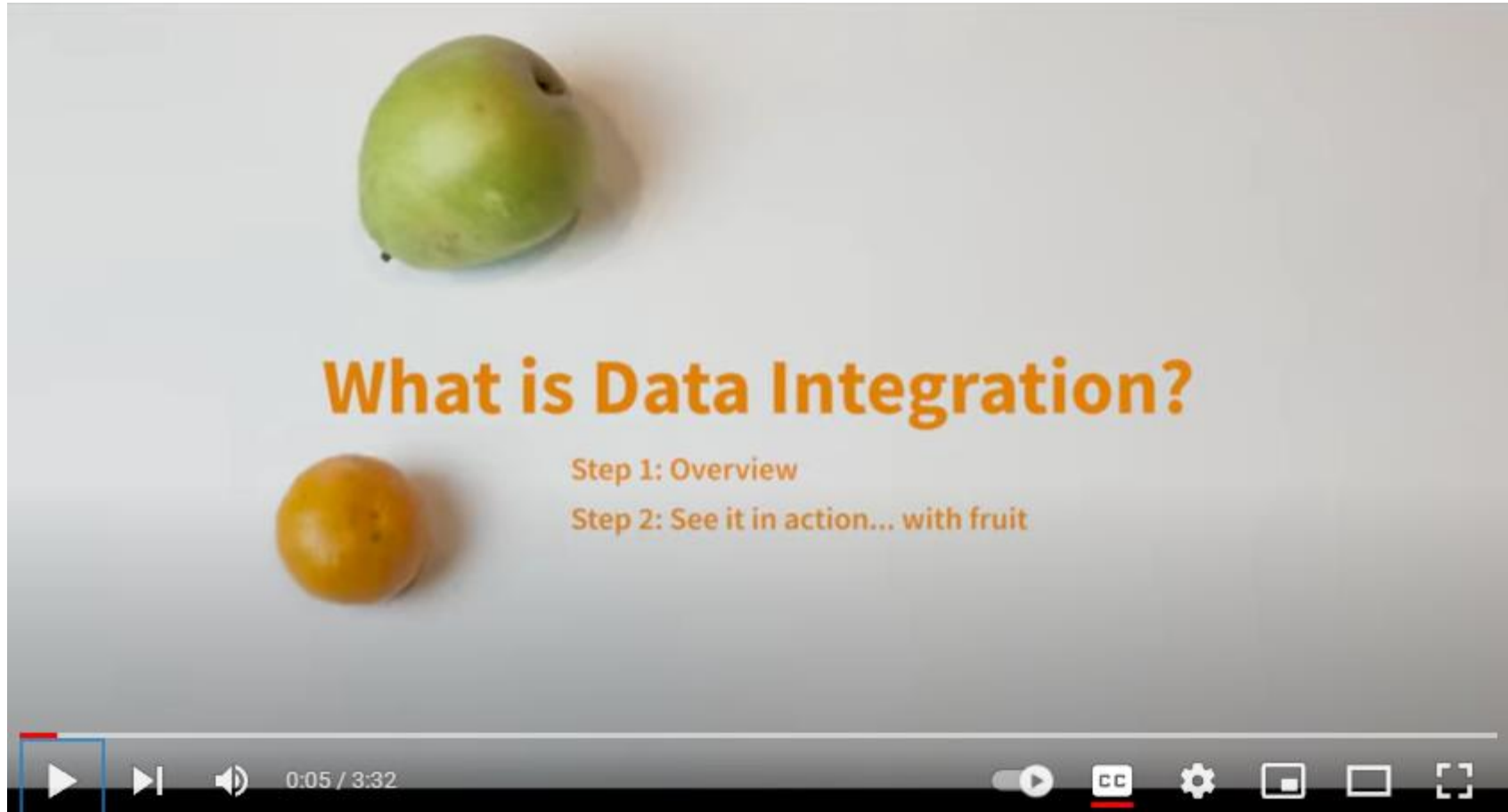
What is DATA Integration?

Critical Points:

- Data Movement in real-time
- Automated Data Transformation (*No Manual Scripting involved*)
- Robust Data Catalog



Learning from Video



Critical Points:

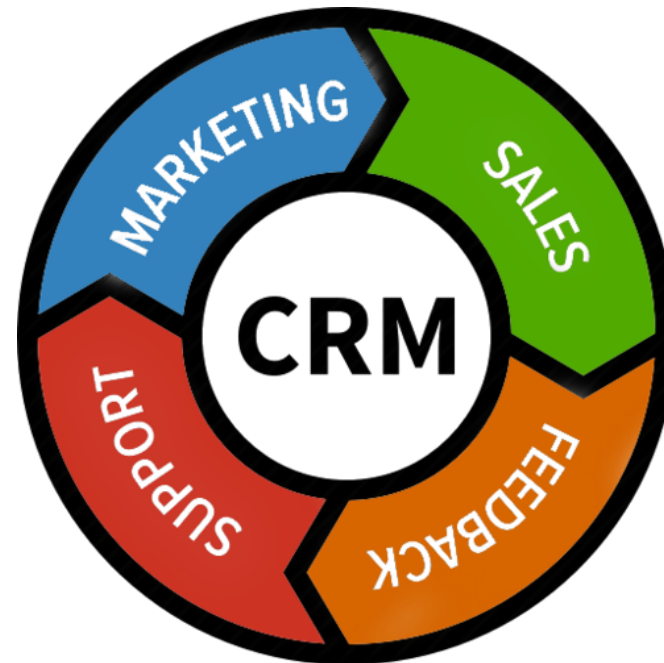
- Challenge: Data Silos
- Access to all data where, when and how the data needed
- Eliminate Manual Effort
- Smoothie Analogy

INTEGRATION TOOLS

THE THREE PRIMARY ENTERPRISE SYSTEMS



Supply Chain Management



Customer Relationship Management

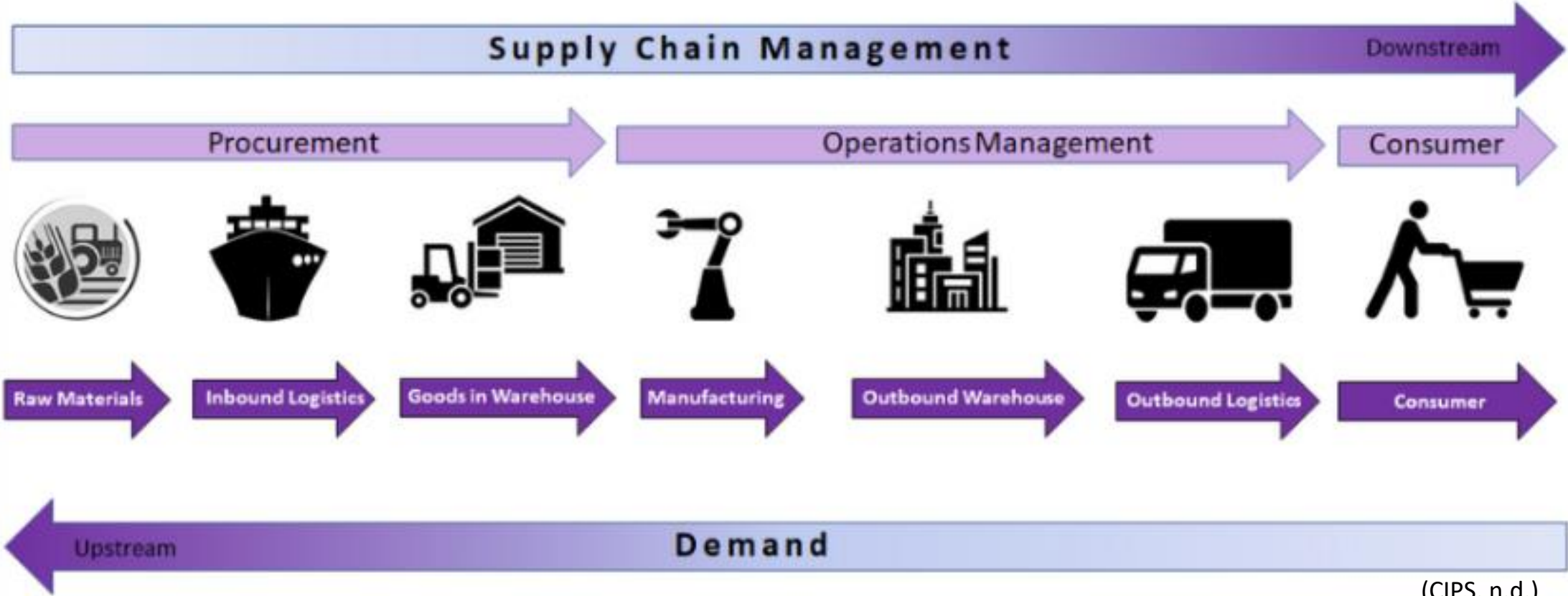


Enterprise Resource Planning

SUPPLY CHAIN MANAGEMENT

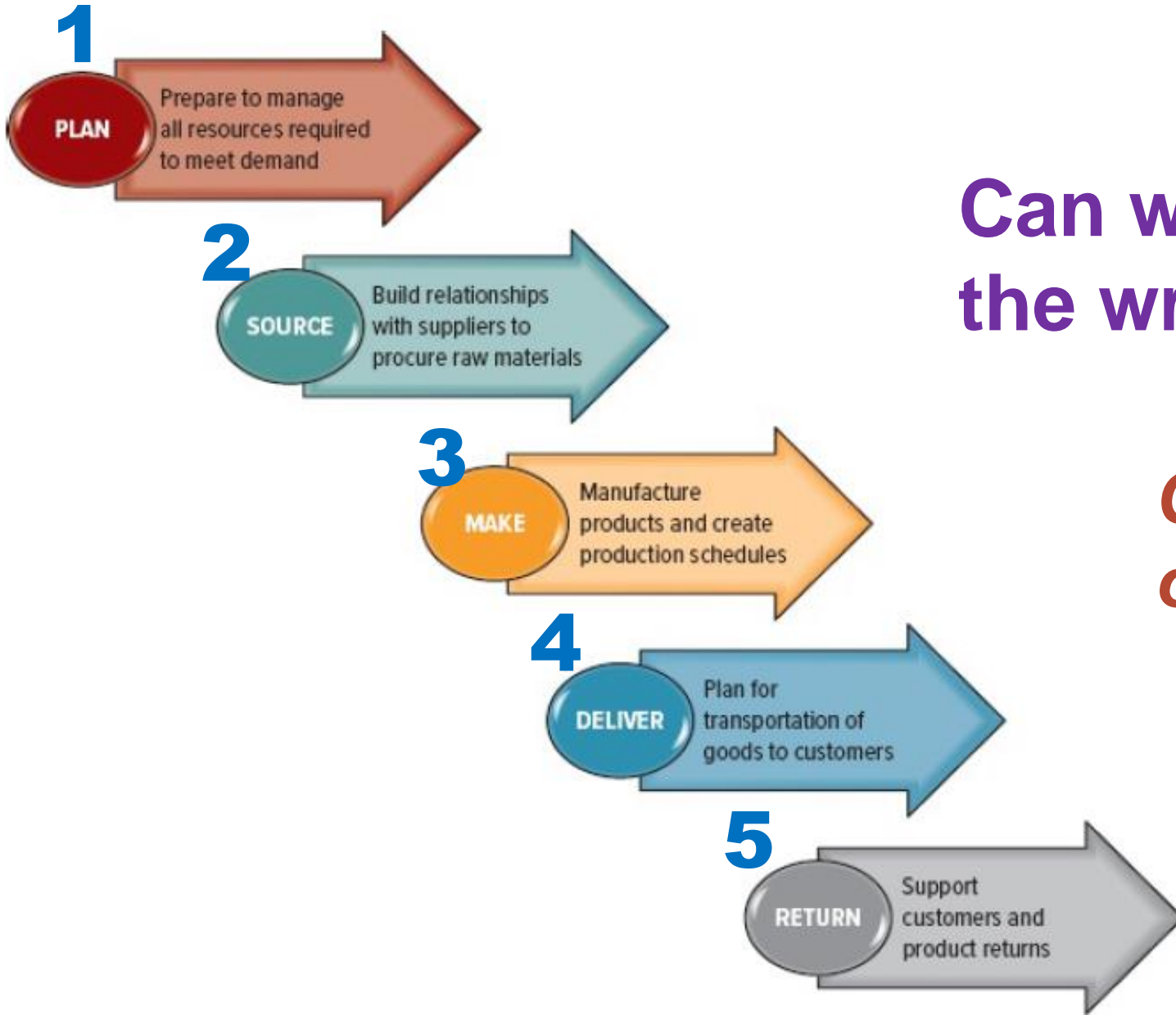
Supply Chain All parties involved, directly or indirectly, in obtaining raw materials or a product (Baltzan, 2020).

Supply Chain Management (SCM) The management of information flows between and among activities in a supply chain to maximize total supply chain effectiveness and corporate profitability (Baltzan, 2020).



(CIPS, n.d.)

THE FIVE BASIC SUPPLY CHAIN ACTIVITIES

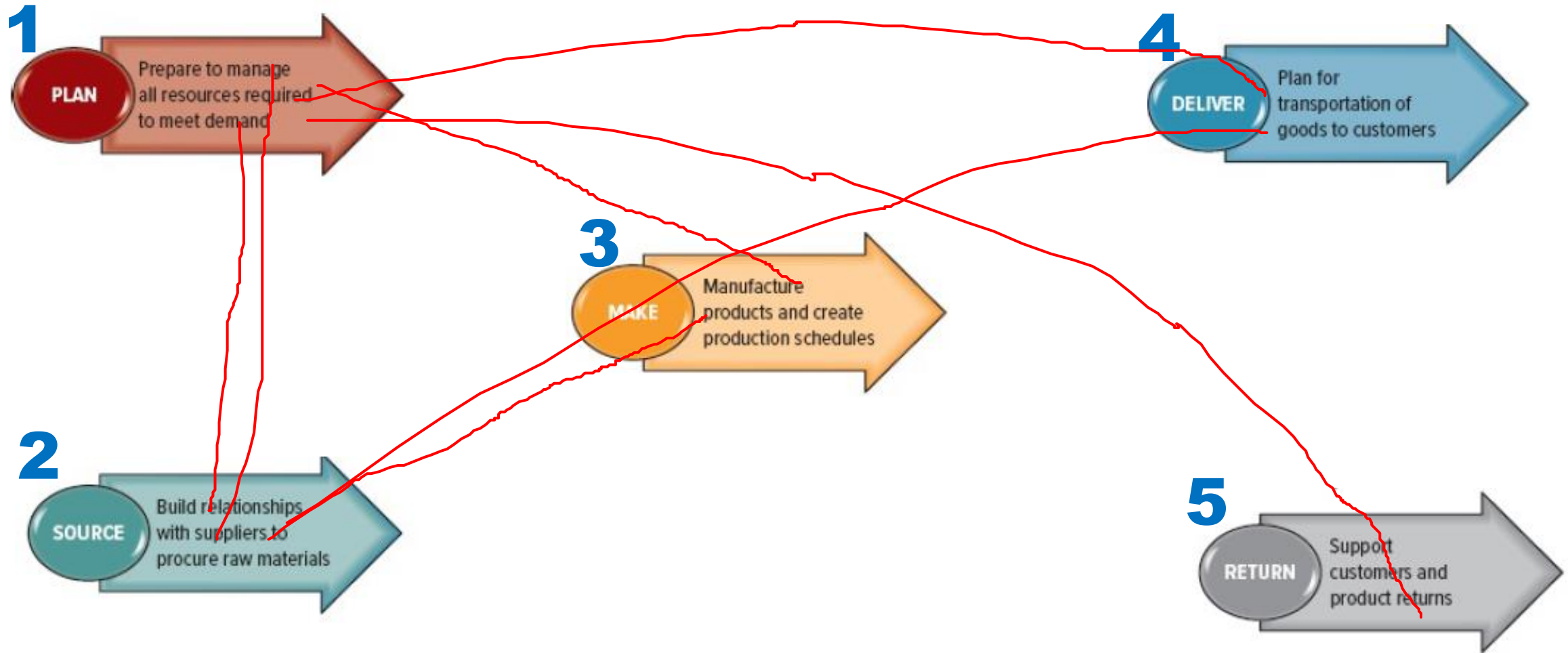


Can we start from the wrong order?

Can we take out one step??

LET'S COUNT!!!

WHICH STEP CONNECTED TO WHICH? *HOW MANY CONNECTIONS WE HAVE?*





PRODUSEN / MANUFACTURE



DISTRIBUTOR
INDOFOOD GROUP



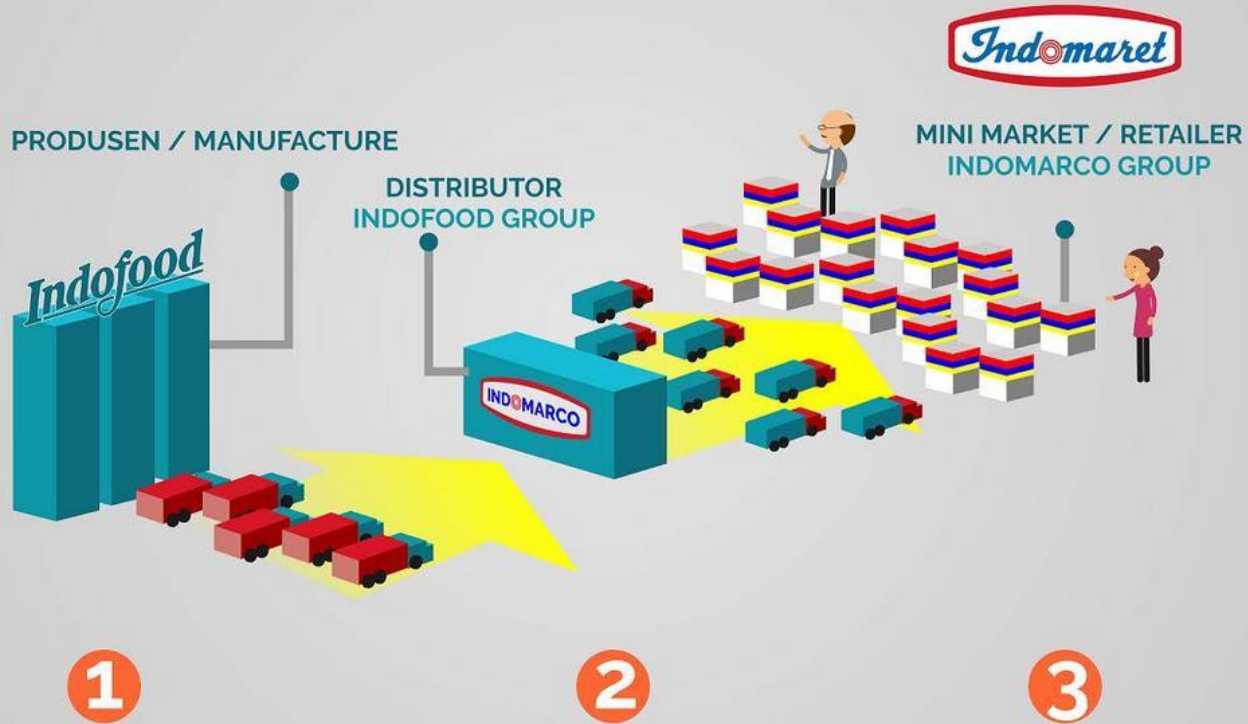
MINI MARKET / RETAILER
INDOMARCO GROUP



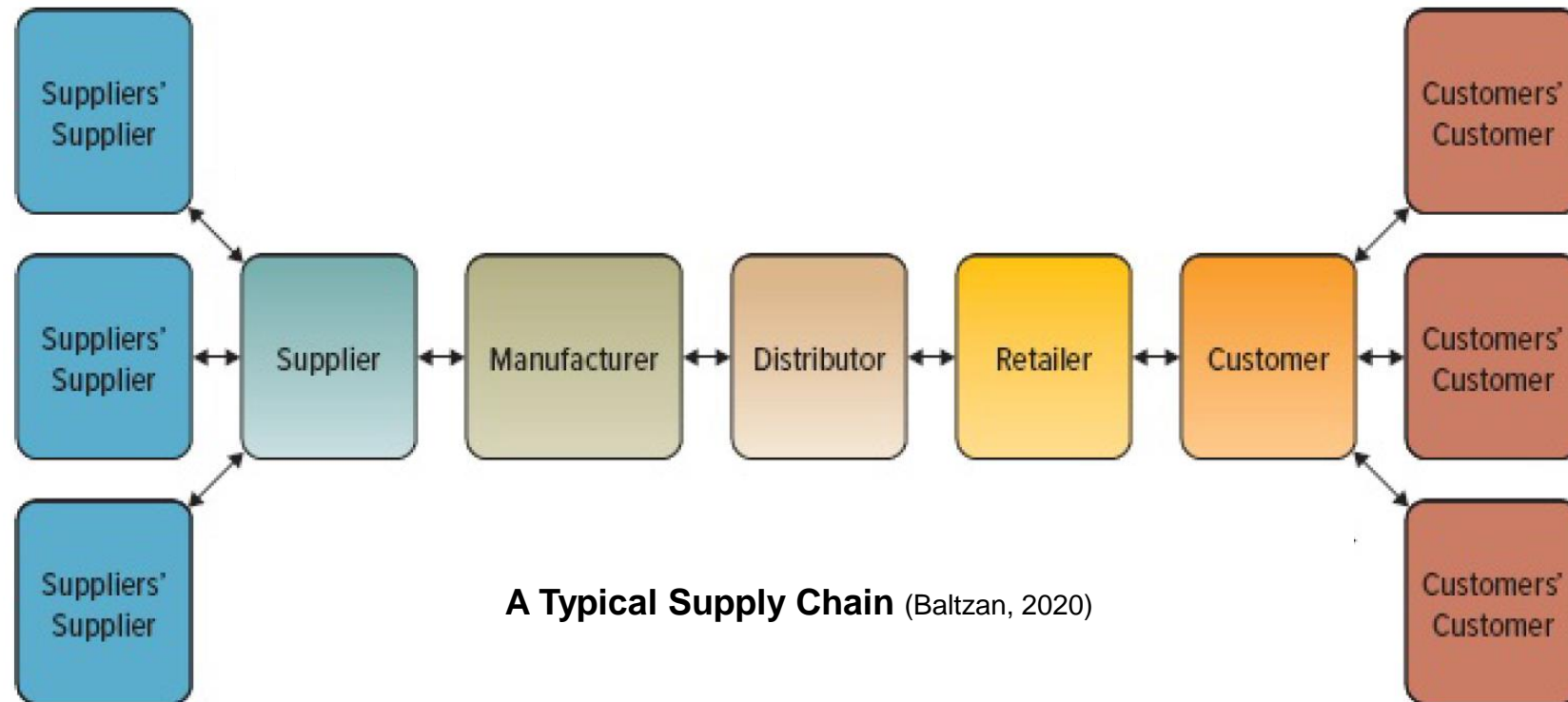
1

2

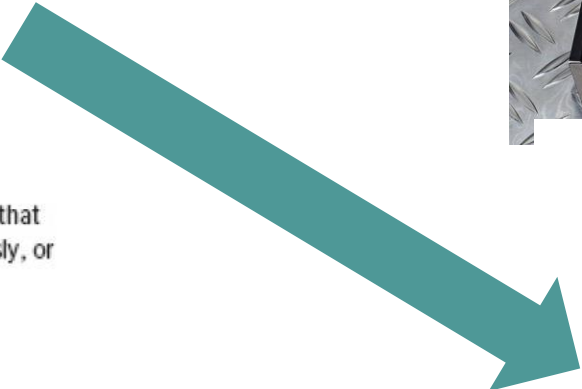
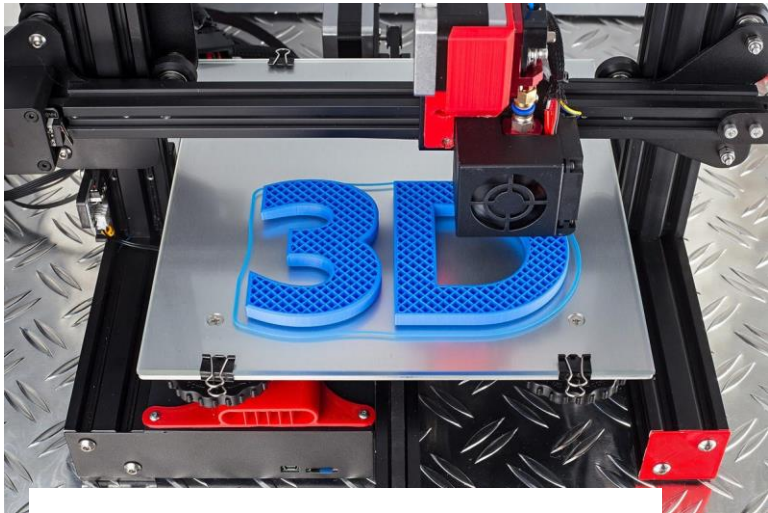
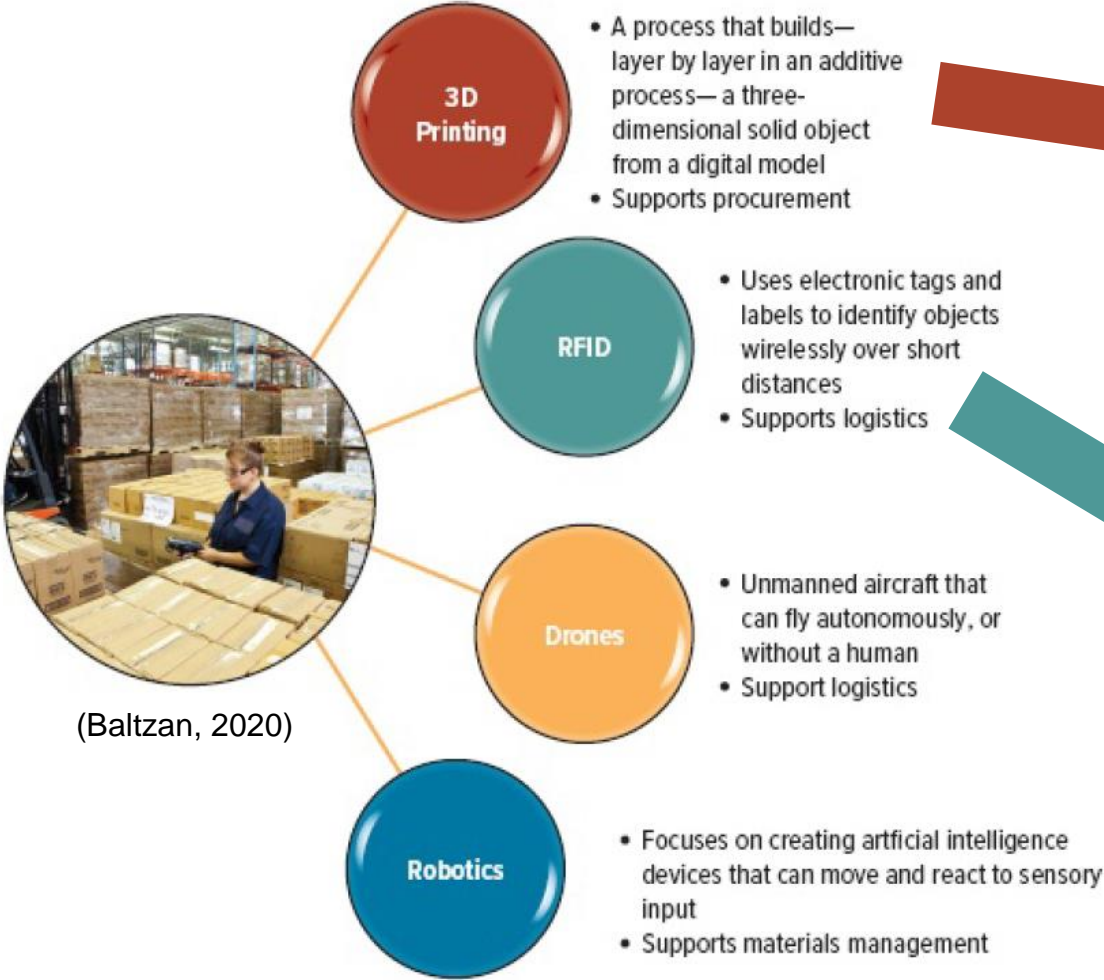
3



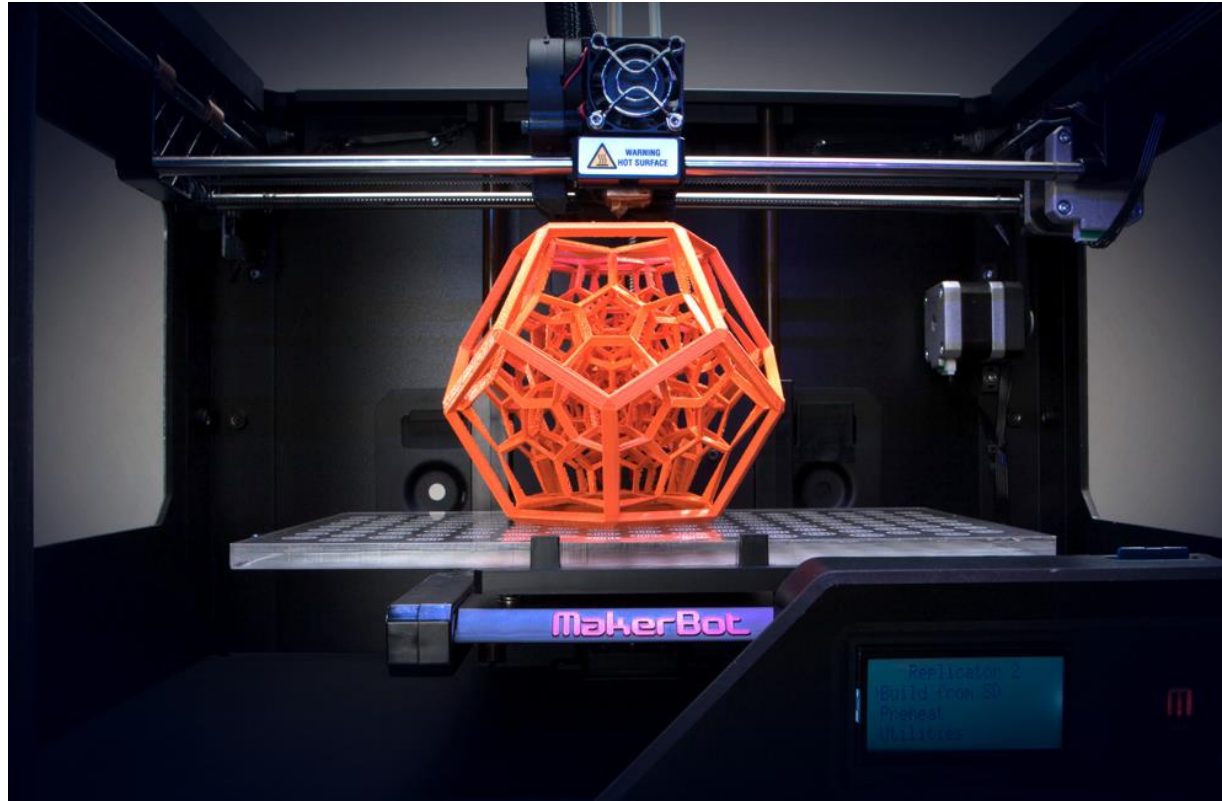
Choose 1 Product/Service and Identify its Supply Chain!



TECHNOLOGIES REINVENTING THE SUPPLY CHAIN



3-Dimensional Printing

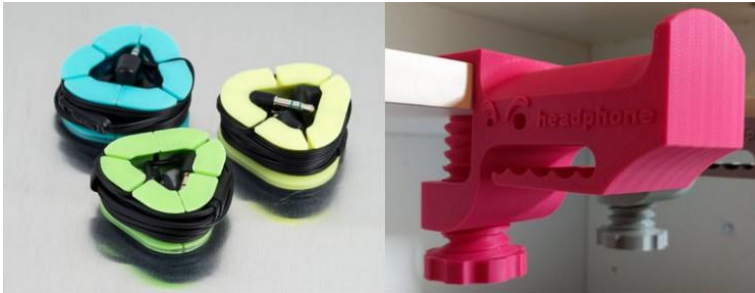
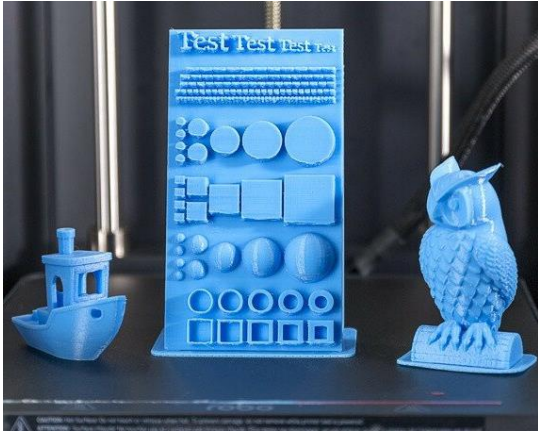


3D printing is a manufacturing process through which three-dimensional (3D) solid objects are created. It enables the creation of physical 3D models of objects using a series of additive or layered development framework, where layers are laid down in succession to create a complete 3D object (Techopedia, 2018)

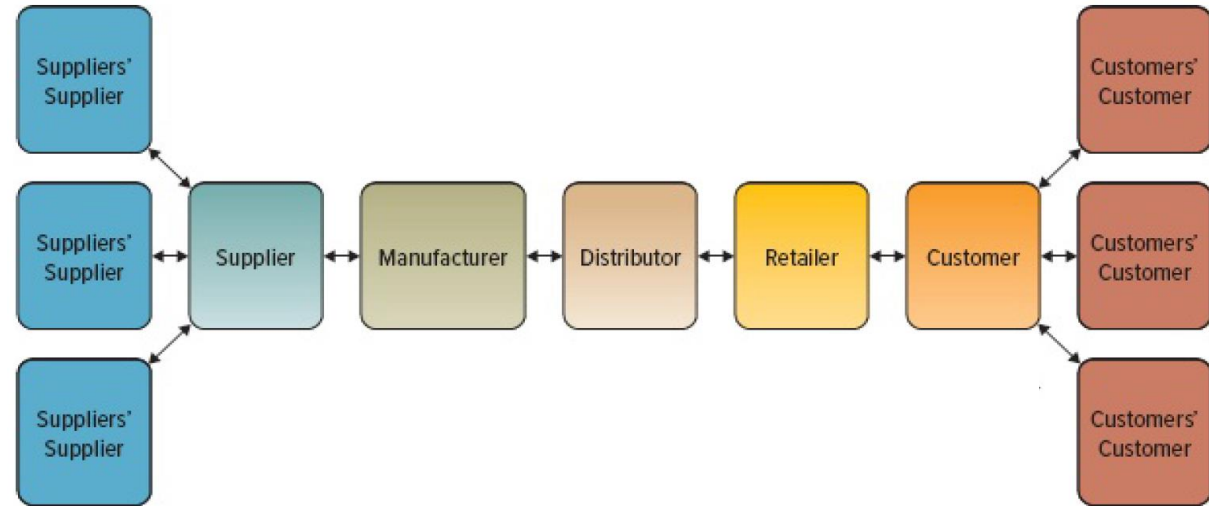
Why 3D Printing is the future:

- Disruptive technology
- Efficient process
- Lighter, stronger, safer product
- Lower Price
- Accessible for any inventor and creator
- Endless possibility (*3D bioprinting is used to create living human cells*)
- Open a way from 4D Printing technology

3-Dimensional Printing

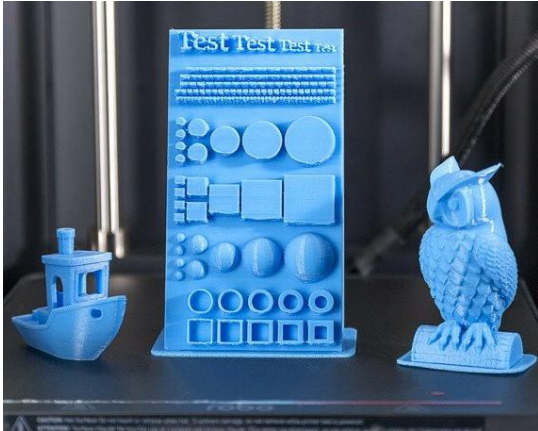


“Many sources are stating that 3D printing has the potential to be vastly more disruptive to business than the Internet” (Baltzan, 2020)

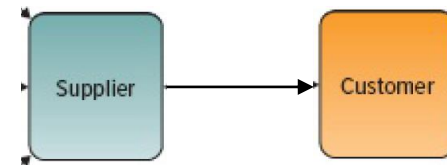
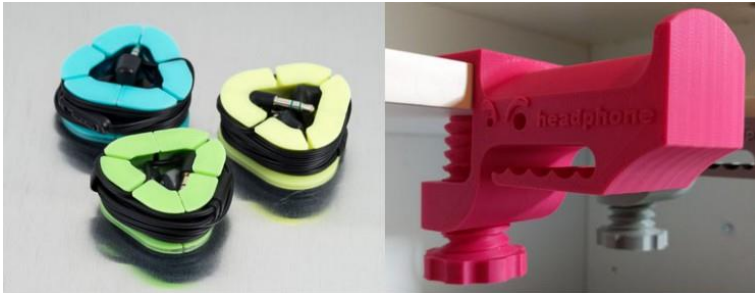


3D PRINTING BRINGS PRODUCTION CLOSER TO USERS

3-Dimensional Printing



“Many sources are stating that 3D printing has the potential to be vastly more disruptive to business than the Internet” (Baltzan, 2020)



3D PRINTING BRINGS PRODUCTION CLOSER TO USERS

Stands for?
RFID (Radio Frequency Identification)



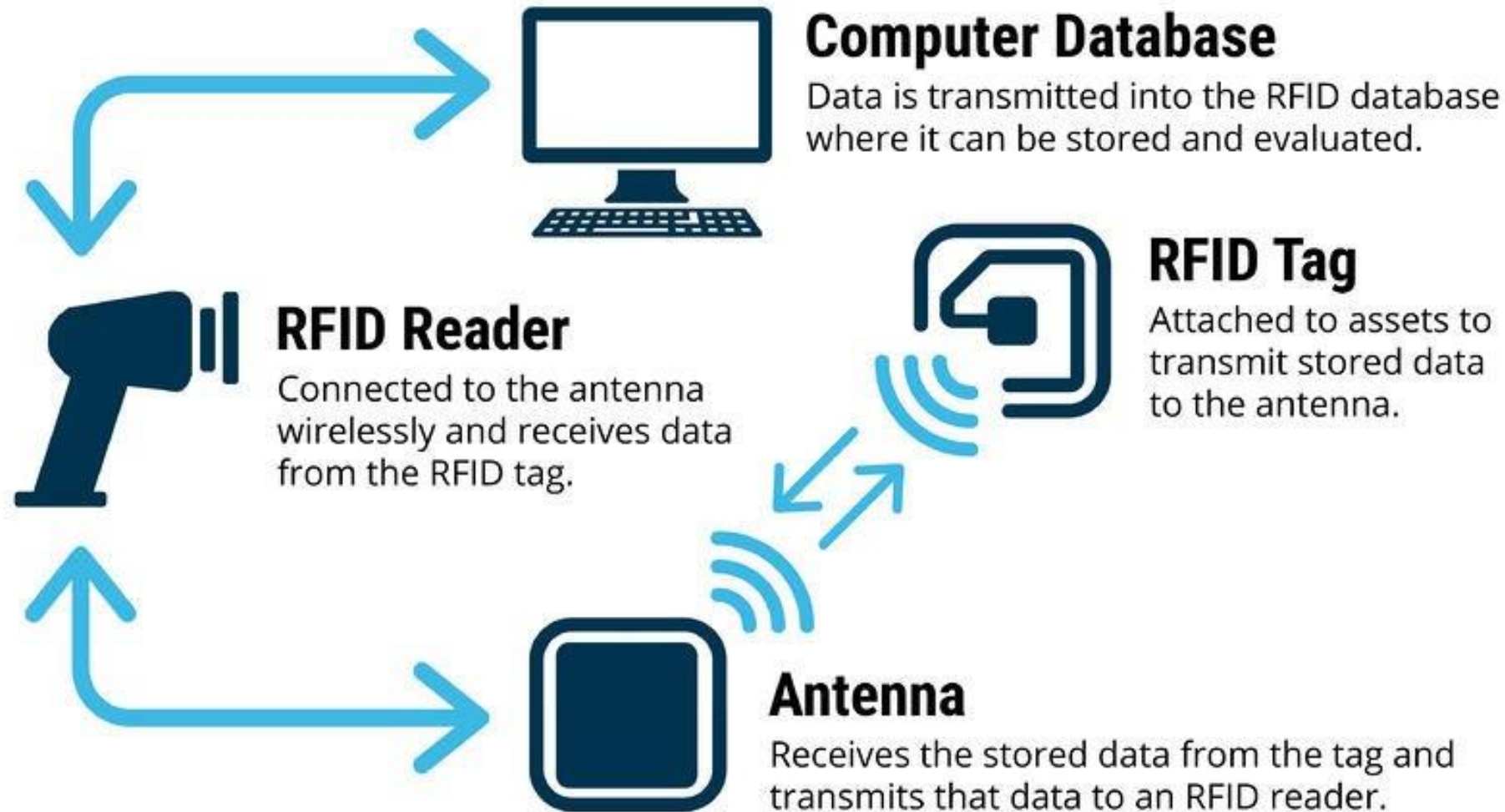
What do you think is the purpose of doing this activity ?

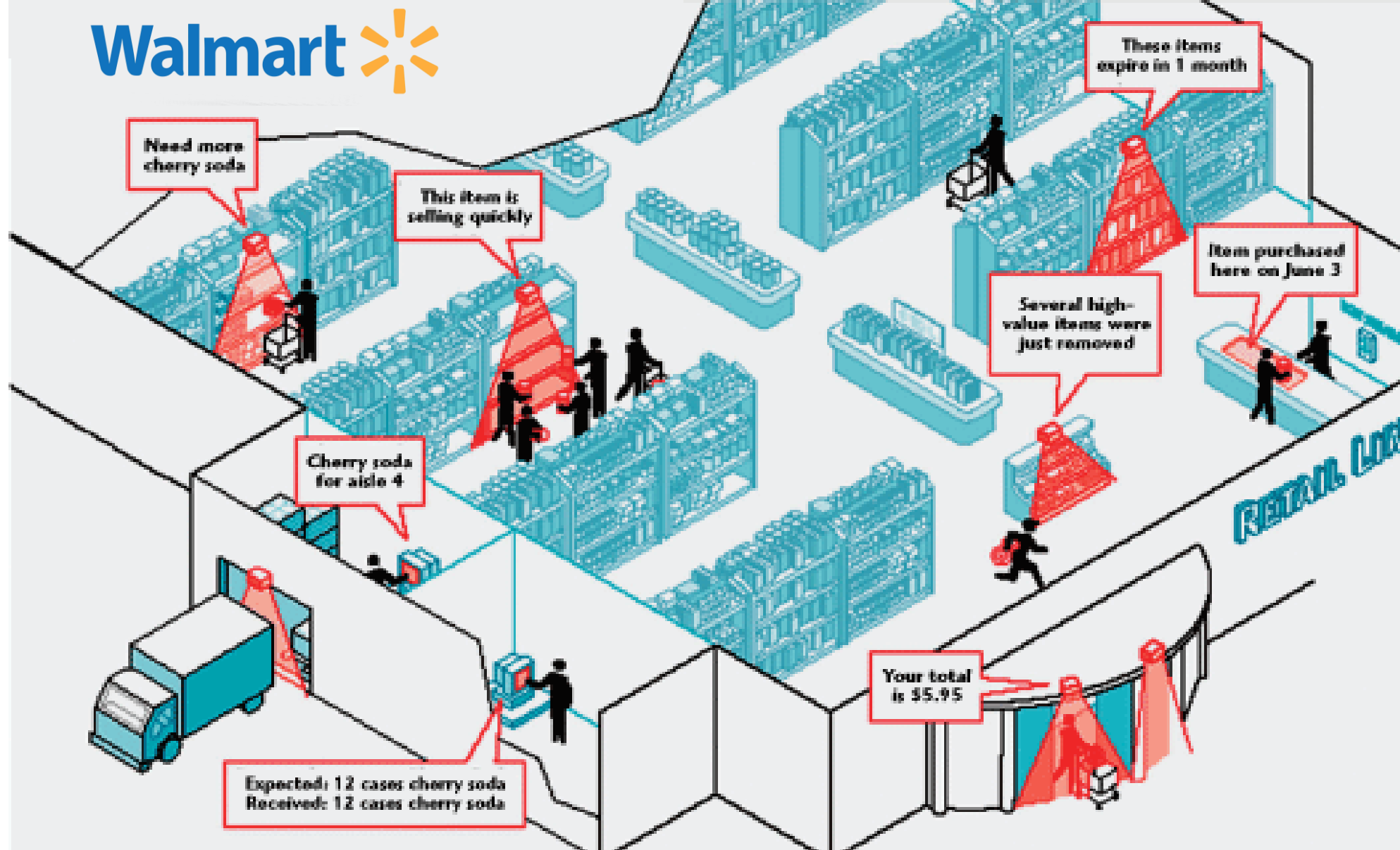
TECHNOLOGIES REINVENTING THE SUPPLY CHAIN

RFID Radio Frequency Identification



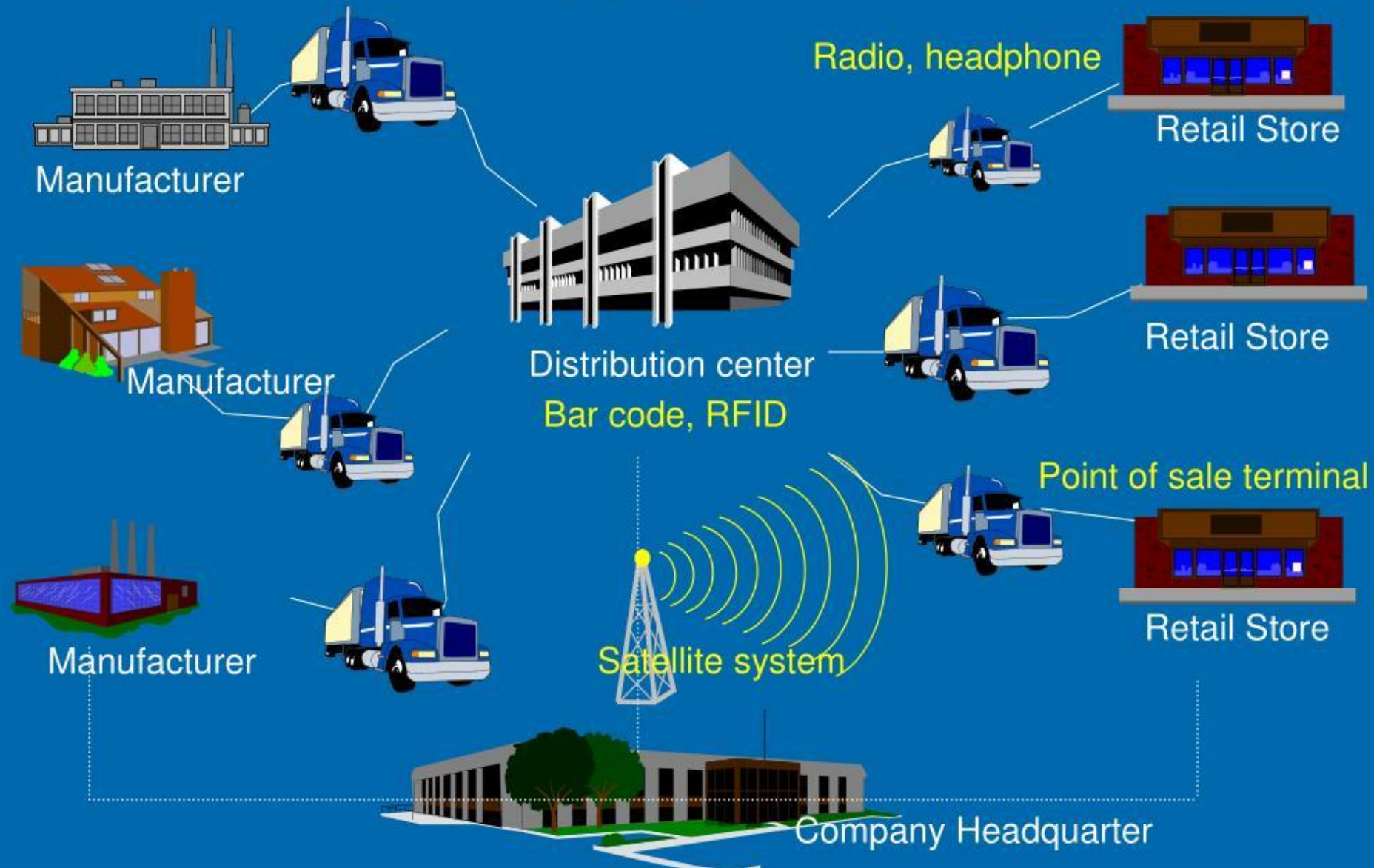
Basic RFID System





The **RFID tags** have unique identification codes encoded in them, just like a barcode, but they can be read at a distance even outside of the line of sight (Wasp, n.d.)

Wal-mart Supply Chain Flow Chat



6,500 trucks that collect goods from suppliers

Retail Link Platform

3 Hours Webinar Training to Suppliers

Many supplier are competing to sell their goods in Walmart



End of Presentation

References

Baltzan, P. (2020). *M: Information systems* (5th ed.). McGraw-Hill.

CIPS. (n.d.). What is a supply chain. The Chartered Institute of Procurement and Supply. <https://www.cips.org/knowledge/procurement-topics-and-skills/supply-chain-management/what-is-a-supply-chain/>

FME Channel. (2020). *What is Data Integration and How Does It Work?* [Video file]. YouTube. <https://www.youtube.com/watch?v=zj0ZxjxHOAs>

Krunchbox. (2019). *The relationship between Walmart and its suppliers.* <https://www.krunchbox.com/how-walmart-collaborates-with-its-vendors>

Qlik. (2021). *What is Data Integration?* [Video file]. YouTube. <https://www.youtube.com/watch?v=Kq4QgbhkgyE>

Rungta, K. (2022). *What is data warehouse? Types, definition & example.* Meet Guru99 - Free Training Tutorials & Video for IT Courses. <https://www.guru99.com/data-warehousing.html>

Techopedia. (2018). *What is 3D printing?* Techopedia.com. <https://www.techopedia.com/definition/17475/additive-manufacturing>

Wasp. (n.d.). *Wal-Mart Uses RFID to Track Underwear.* Wasp Barcode Technologies. <https://www.waspbarcode.com/buzz/wal-mart-uses-rfid-to-track-underwear>