

SOCIAL CAPITAL

Lecture 3

Elements of Social Capital

Lecturer:

Damara Dinda Nirmalasari Zebua, M.P.

Basic Competencies

Students are able to understand the elements of social capital.



Topic of discussion

Types of Social Capital
Elements

Case Study: Analyzing
the Application of Social
Capital Elements

Keywords

TRUST

TRUST IS A PERSON'S WILLINGNESS TO RELY ON OTHER PEOPLE, WHERE WE HAVE CONFIDENCE AND CREDIBILITY IN IT.

NORMS

NORMS ARE A MEASURE OF RIGHT OR WRONG, AND APPROPRIATE OR NOT, INDIVIDUAL BEHAVIOR IN SOCIETY.

NETWORK

NETWORKING IS AN ACTIVE PROCESS OF BUILDING AND MANAGING PRODUCTIVE RELATIONSHIPS.



What are the elements of social capital?

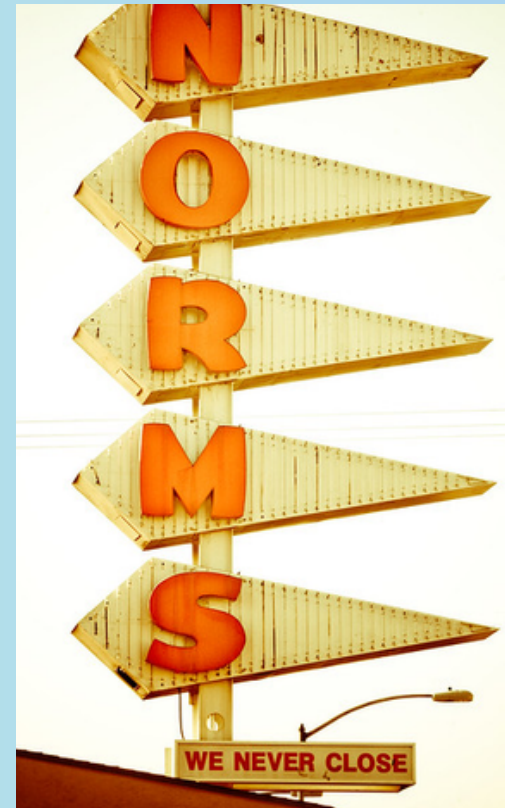
Do you already have all of these elements in relationships with other people?

What elements of social capital do you know?



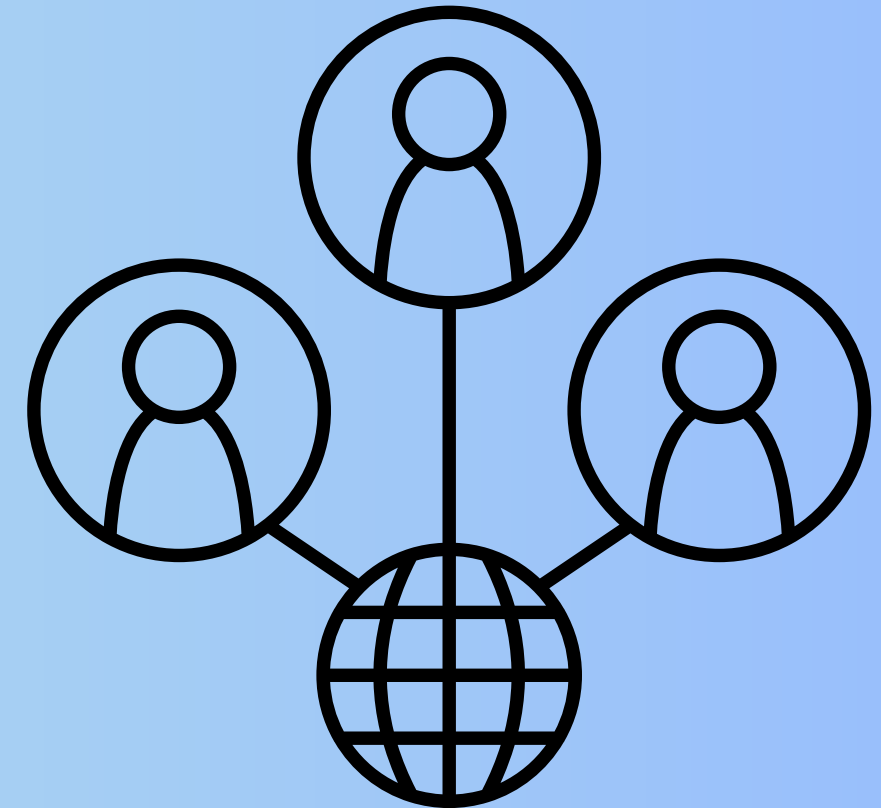
TRUST

©[Anemone123] via Canva.com
Team Putting Their Hands Together



NORMS

Hawk, T. (2008). Norms, Plate 2. Retrieved April 10, 2023, from <https://flickr.com/photos/thomashawk/8434644809>.

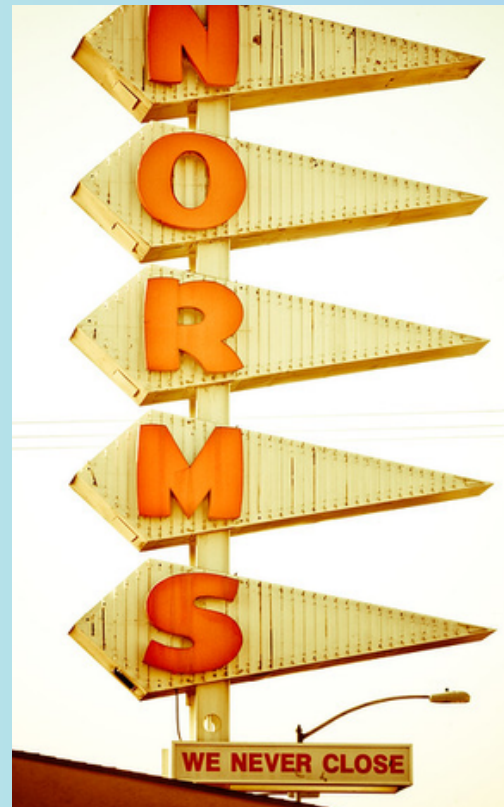


NETWORK

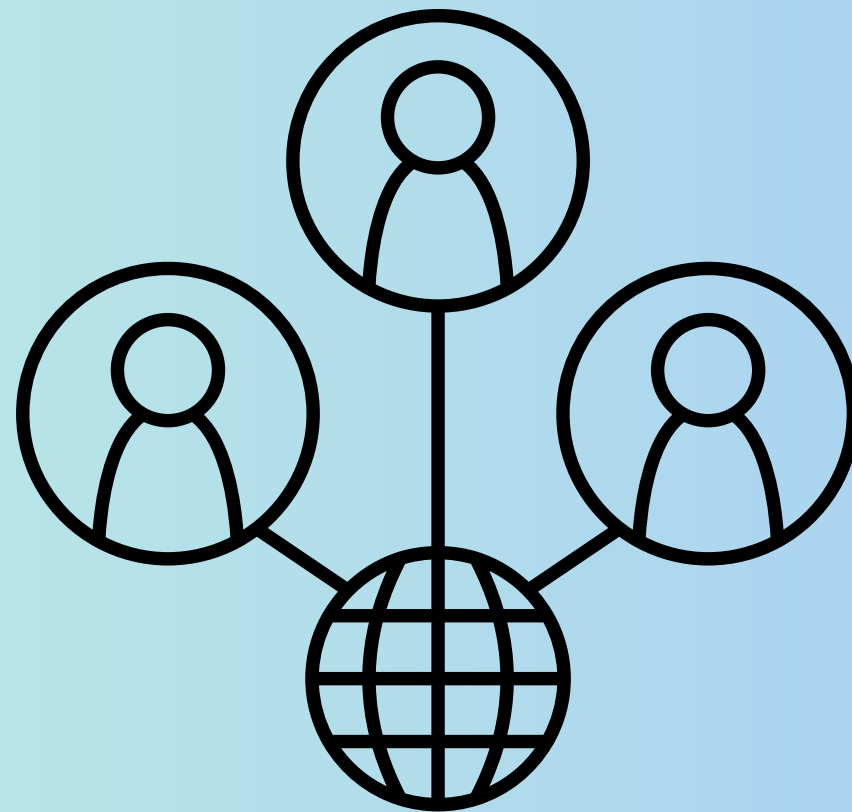
©[Eucalyp] via Canva.com
Nomad gradient icon



TRUST



NORMS



NETWORK

Rustiadi (2011)

SOCIAL CAPITAL

```
graph TD; A[SOCIAL CAPITAL] --> B[TRUST]; A --> C[NORM]; A --> D[NETWORK]
```

TRUST

NORM

NETWORK

TRUST

Honesty

Egalitarian

Generosity

Fairness

Tolerance

TRUST

Honesty

TRUST

Honesty

Fairness

TRUST

Honesty

Egalitarian

Fairness

TRUST

Honesty

Egalitarian

Fairness

Tolerance

TRUST

Honesty

Egalitarian

Generosity

Fairness

Tolerance

Definition according to the experts:

Fukuyama (1996): **trust is the hope that grows in a society that is shown by the existence of honest, orderly and cooperative behavior based on shared norms.**

Definition according to the experts:

Hasbullah (2006): **trust is a form of willingness to take risks in social relations based on a feeling of confidence that others will do something as expected and will always act in a mutually supportive pattern of action.**

Definition according to the experts:

Gabby and Leender (2003): **trust is** a belief about another party (**a trusted party**), which leads a person (**a trusted party**) to assume that the actions of a trusted party **will have positive consequences** for the trusted party.

Definition according to the experts:

Grootaert et al (2004): **trust is an input of social capital because mutual trust between individuals forms the basis for social interaction that leads to closer social relations between community members.**

Definition according to the experts:

Soleman (1984): **norms are guidelines or benchmarks for behavior** derived from values because they are based on abstract conceptions of **what is good and what is bad.**

Definition according to the experts:

Setiadi and Kolip (2011): **norms are rules** in social life collectively or together **which contain various sanctions**, both moral sanctions and physical sanctions, for people or groups of people who violate social values.

Definition according to the experts:

Fukuyama (1996): **norms are** part of social capital **that is not created** by bureaucrats or the government. **Norms are formed through tradition, history, charismatic figures who build a procedure for the behavior of a person or a group of people,** within which social capital will then arise spontaneously in order to determine rules that can regulate personal interests and group interests.

Definition according to the experts:

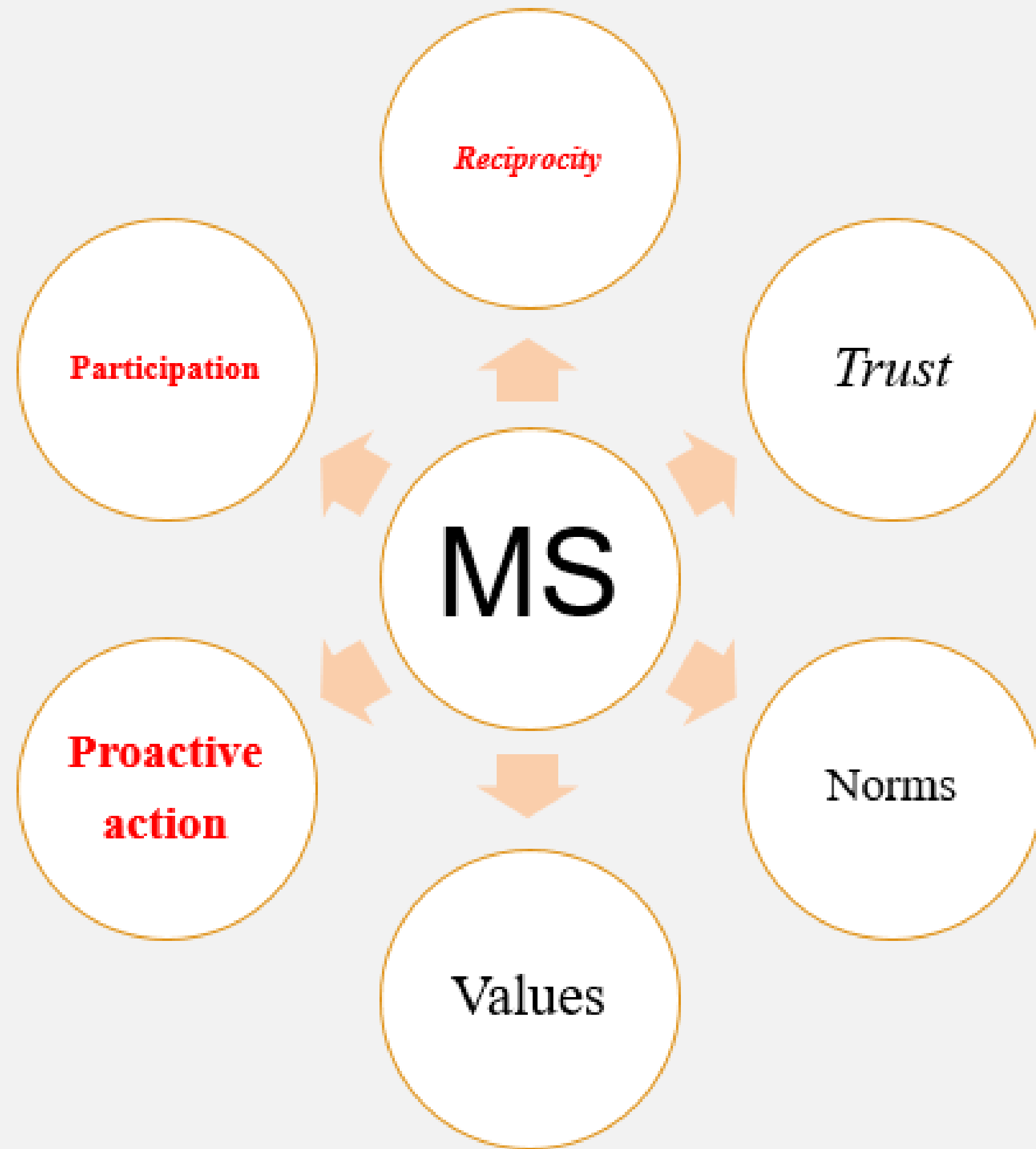
Rustiadi et al., (2011): **norms are social rights to control one's actions by others.** This right is **accompanied by a form of sanctions** that can shape proper behavior.

Definition according to the experts:

Damsar (2009): **networking is a bond between nodes (people or groups) connected by media (social relations) that are bound by trust. Trust is maintained by norms** that bind both parties.

Are there other elements of social capital?





Trust

Mutual trust in society

Norms

A set of rules that society obeys and follows

Values

Ideas passed down from generation to generation that are considered true and important

Proactive action

Desire to be involved in community activities

Participation

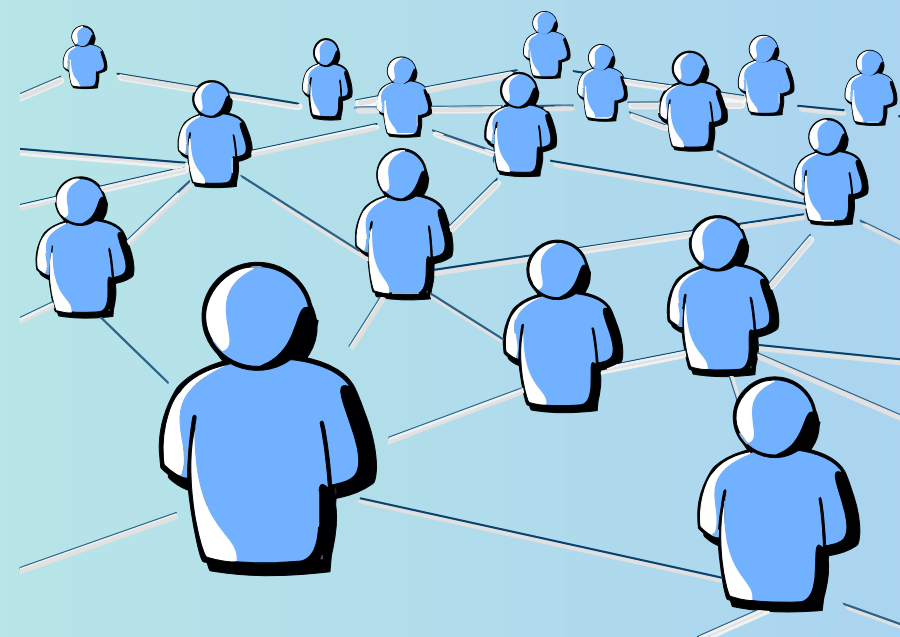
The ability to engage in a network of social relationships

Reciprocity

Exchange kindness between individuals or groups

Case study 1: Currently, social capital is built in society in the era of globalization.

- 1) What is the current era of globalization like?
- 2) Why is elements of social capital needed in the era of globalization?
- 3) What is the role of elements of social capital in the era of globalization?



Case study 2: It was found that social capital influences farmer productivity.

- 1) What is meant by farmer productivity?
- 2) What influences farmer productivity?
- 3) What is the role of elements of social capital on farmer productivity?



What can we conclude from these two case studies?

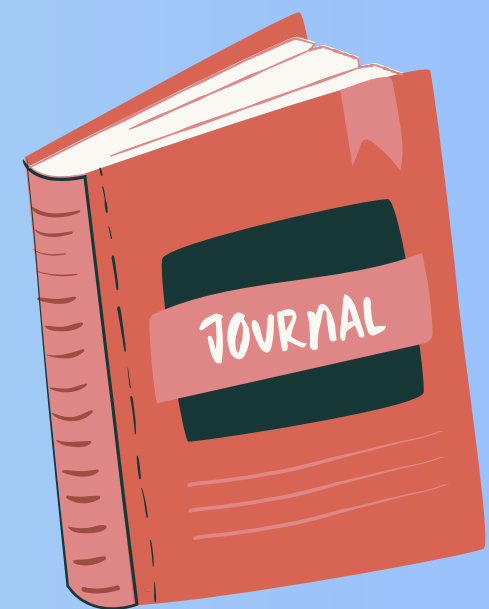
From the two case studies, it can be concluded that the elements of social capital are not something that stands alone, but these elements are inherent in each type of social capital.

The elements of social capital are not limited to those we have studied today.

Therefore, to enrich our knowledge and at the same time learn from life in society, we can find out from various studies related to social capital that have been conducted.

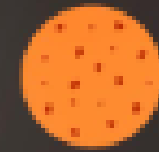
So, I suggest that you look for at least 2 journals/proceedings to identify the elements of social capital contained therein.

Try to mention each of the elements, how they are applied, and how they impact each individual who has them.





ELEMEN MODAL SOSIAL



KEPERCAYAAN (TRUST)

Sikap percaya kepada pihak lain



JEJARING

Hubungan atau koneksi dengan orang lain (berelasi)



NORMA

Aturan tidak tertulis yang dipercaya dan dipatuhi masyarakat



NILAI (VALUE)

Suatu hal yang dianggap baik dan buruk dalam masyarakat



TIMBAL-BALIK

Hubungan antara individu dengan individu atau kelompok dengan kelompok yang melibatkan satu sama lain (reling)

PARTISIPASI

Proses keterlibatan seseorang dalam sebuah kegiatan yang sedang berjalan



PROAKTIF

Sikap yang cenderung memanfaatkan peluang, berani mengambil tindakan dalam memutuskan sesuatu serta aktif dalam melakukan pekerjaan yang dilakukan



KOLABORASI

proses bekerja sama untuk menelusuri gagasan atau ide dan menyelesaikan masalah secara bersama-sama menuju visi bersama



Elemen modal sosial tidak hanya kepercayaan, Jejaring, dan norma saja. Seluruh elemen modal sosial ini berguna membantu manusia dalam bersosialisasi serta menentukan sikap yang positif ketika berkaitan dengan bermasyarakat

MODAL SOSIAL PEMBERDAYAAN MASYARAKAT

Dengan bergabungnya nelayan kedalam program LSM nelayan akan diberikan fasilitas jaring dll serta perijinan yang dipermudah

Berpartisipasi dalam kegiatan konservasi biota laut dan menjadi mitra dalam pemerintah desa dalam melakukan kegiatan pertanian

Kepercayaan masyarakat nelayan dengan program dari LSM

RESIPROCITY

TRUST

PARTISIPASI

TINDAKAN PROAKTIF

NORMA SOSIAL

Keinginan masyarakat petani dan nelayan bergabung dalam organisasi kelompok tani maupun program yang diadakan

NILAI

Masyarakat kelompok tani menyakini warisan budaya Mapalus (adat Istiadat Minahasa)

Kegiatan gotong royong merupakan nilai yang dapat dipercaya agar masyarakat petani dapat berdayaguna dan terorganisir

References

Usman, Sunyoto. 2018. Modal Sosial. Yogyakarta: Pustaka Pelajar. Page: 1-30.

Field, John. 2010. Modal Sosial. Bantul: Kreasi Wacana. Page: 21-46.

On the next chapter, we'll learn about
Level of Analysis of Social Capital and The
Mechanism of its Formation Process



Do you have any question?

Do not hesitate to contact me through
e-mail:

damaradinda.zebua@uksw.edu



THANK YOU

