

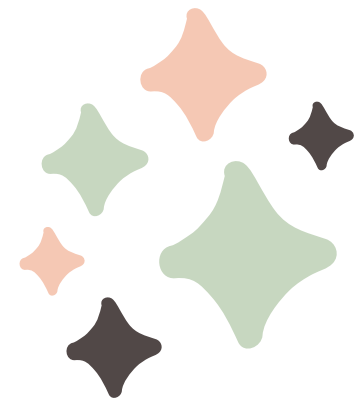
# SOCIAL CAPITAL

## **Lecture 13**

Social Capital: Learning from Farmers in Indonesia  
vs Farmers in Other Countries

LECTURER:

DAMARA DINDA NIRMALASARI ZEBUA, M.P.

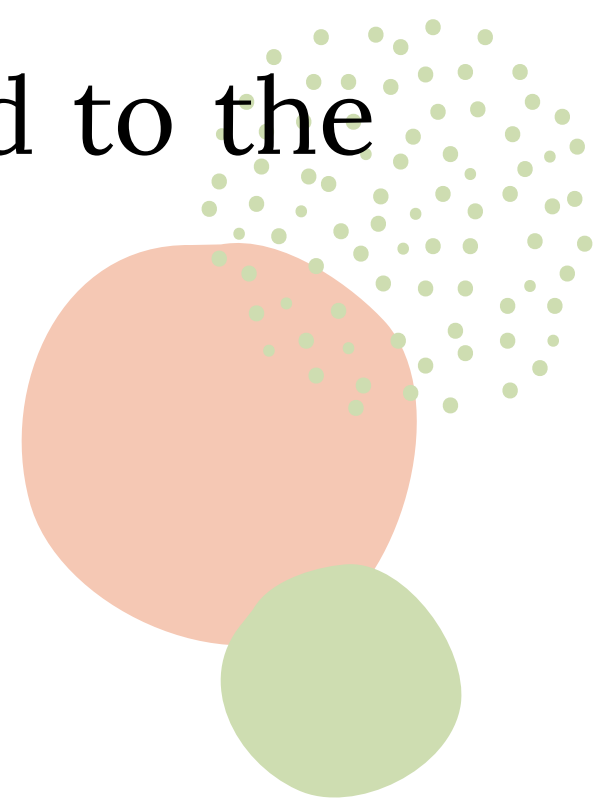


# Basic Competencies

Students can understand the differences in the ownership of social capital owned by farmers in Indonesia and farmers in other countries, particularly in food crop and horticulture farmers.



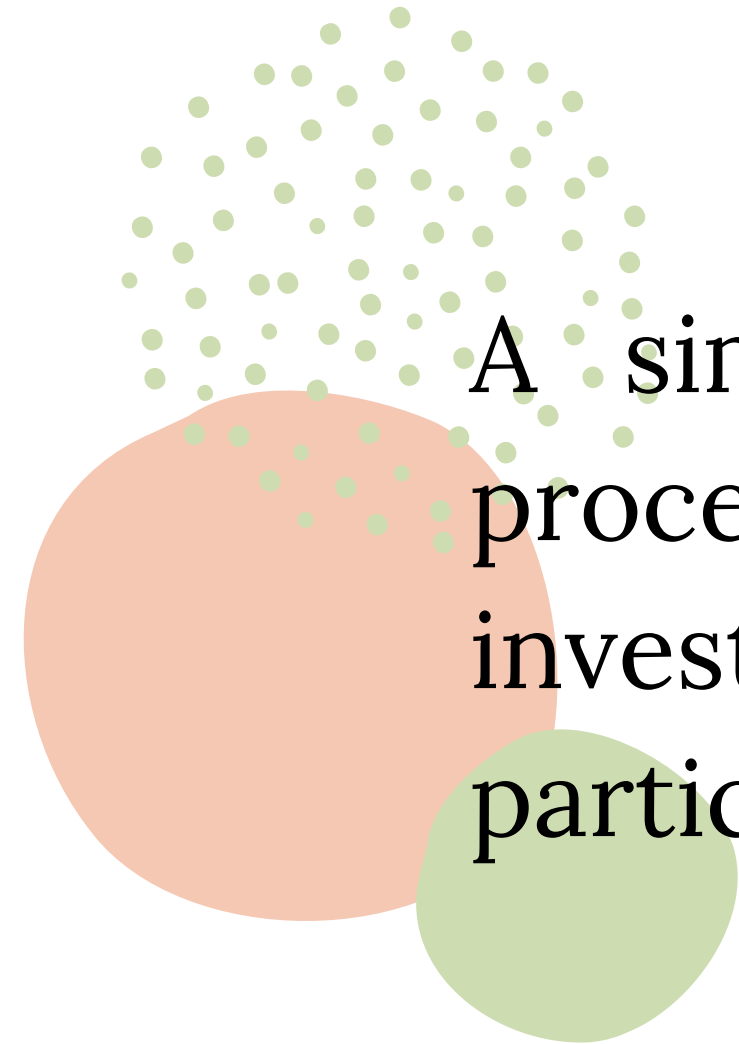
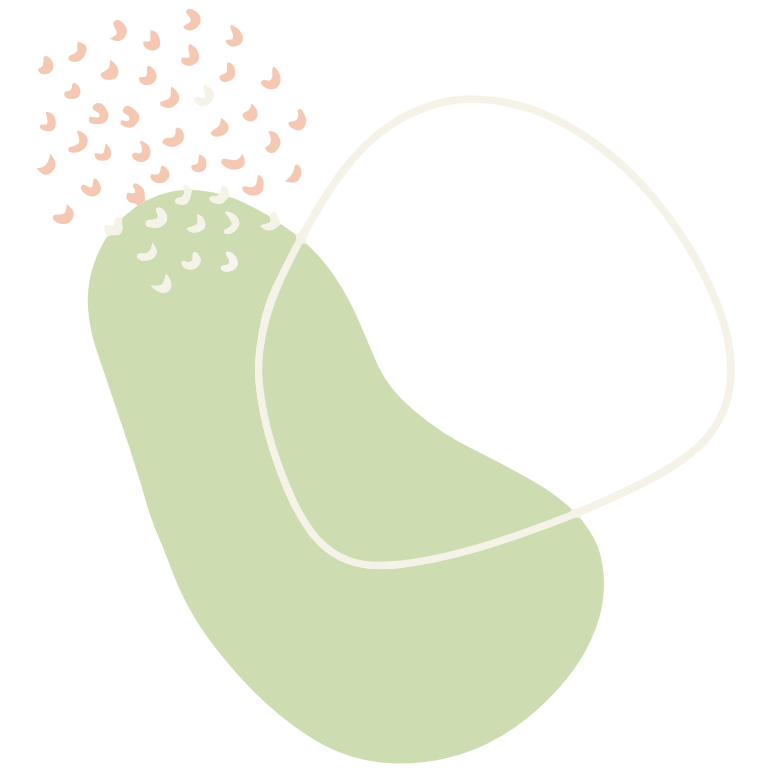
# Topic of Discussion

- Social capital in developing countries versus developed countries
  - Social capital at the farm level related to the adoption of technological innovations
  - Conclusion
- 

# Keywords

## Study case

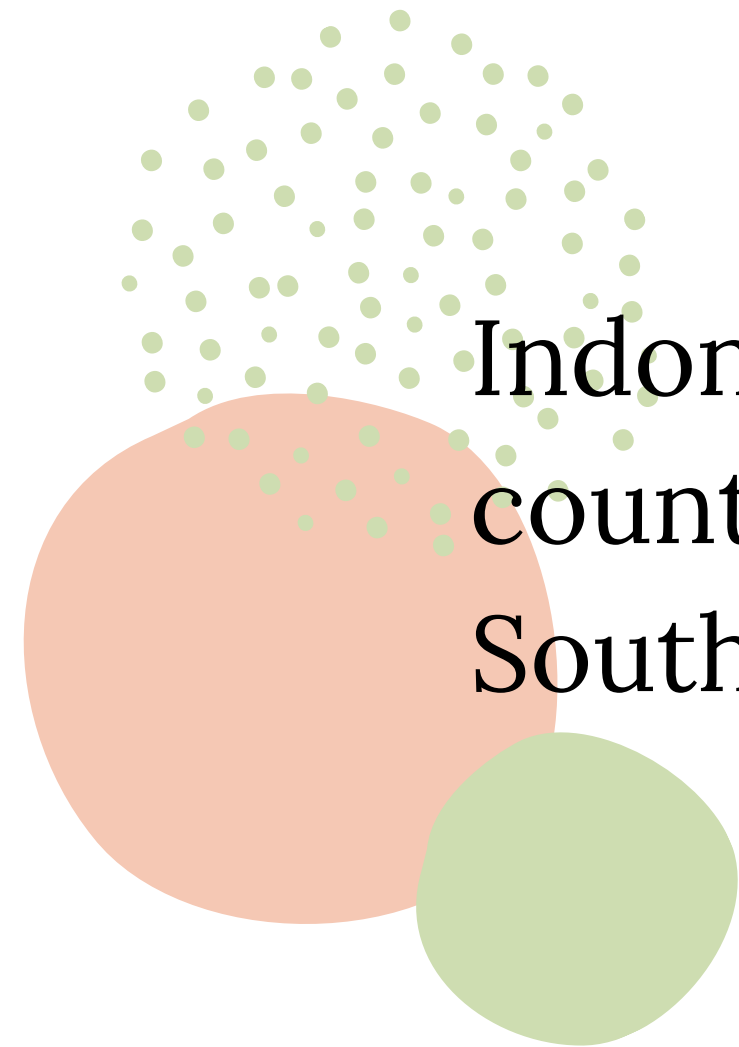
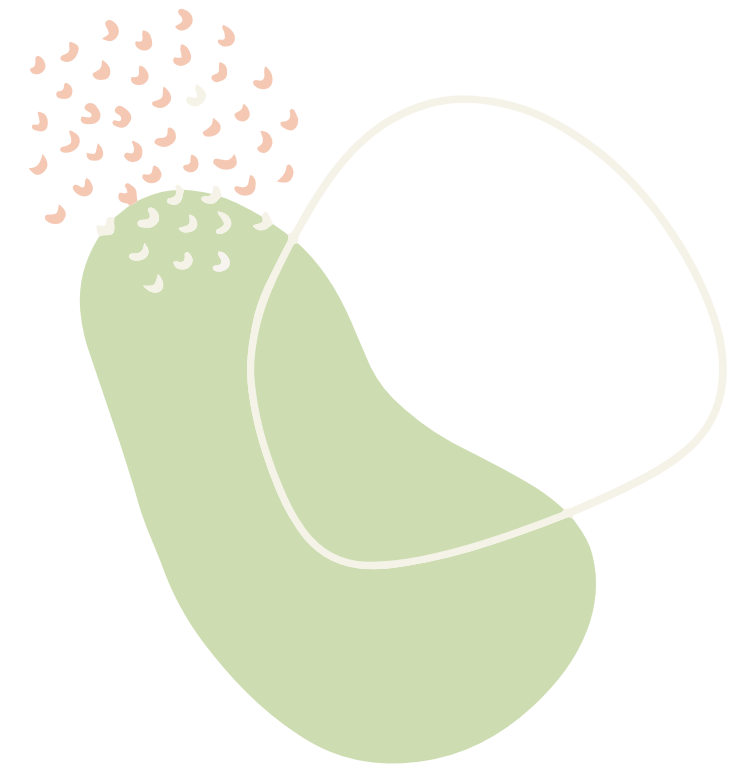
A simple case study is defined as a process of in-depth and detailed investigation or examination of a particular or special event that occurred.



# Keywords

## Indonesia

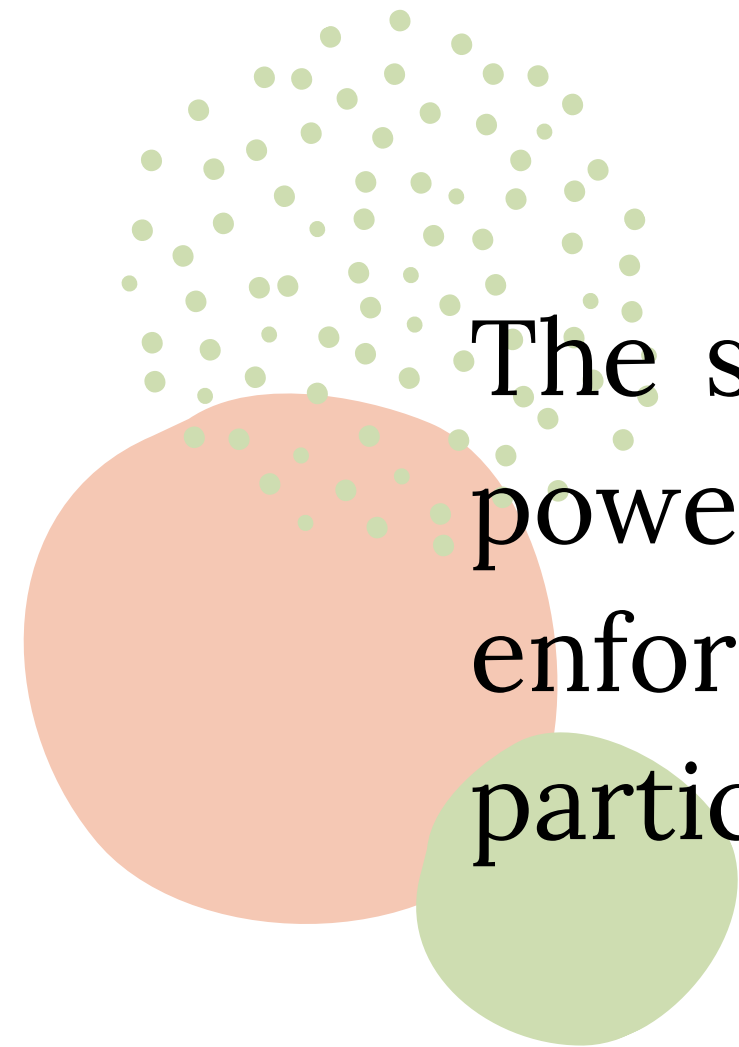
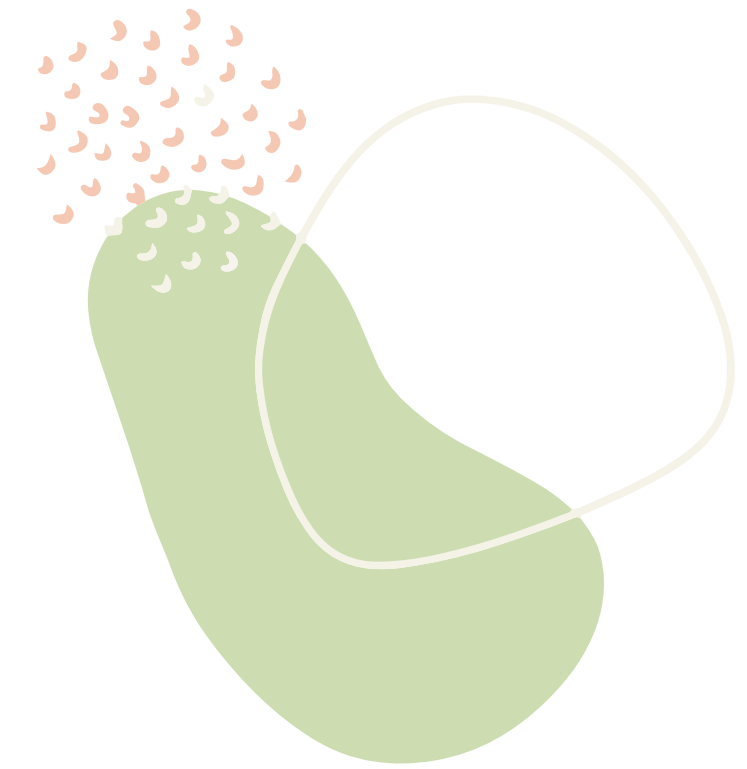
Indonesia is the largest archipelagic country in the world which is located in Southeast Asia.



# Keywords

## Other countries

The state is an organization of sovereign power with a governance system that enforces order over the people in a particular area.






How is social capital in  
developing and developed  
countries?

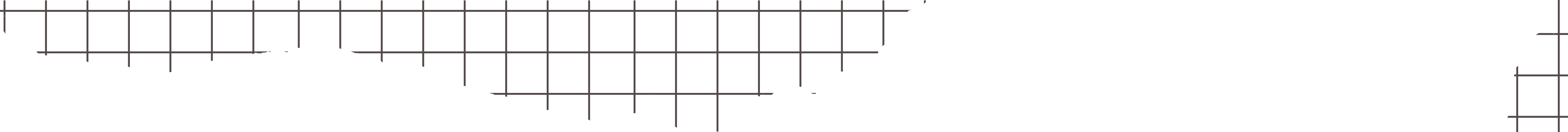


# The difference between developing countries and developed countries


Developing country is a term used to describe a country that has a relatively high level of economic growth.

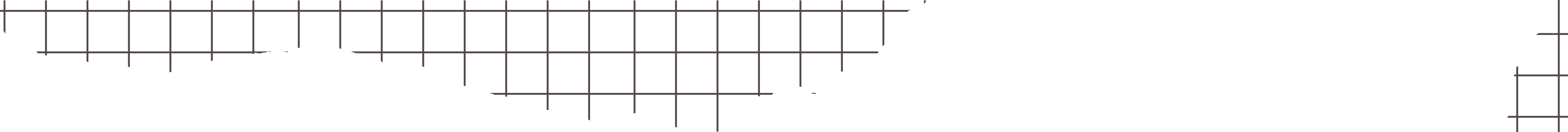
A developed country (or high-income, industrialized country) is a sovereign country that has a high quality of life, an advanced economy and a sophisticated technological infrastructure relative to other less developed countries.





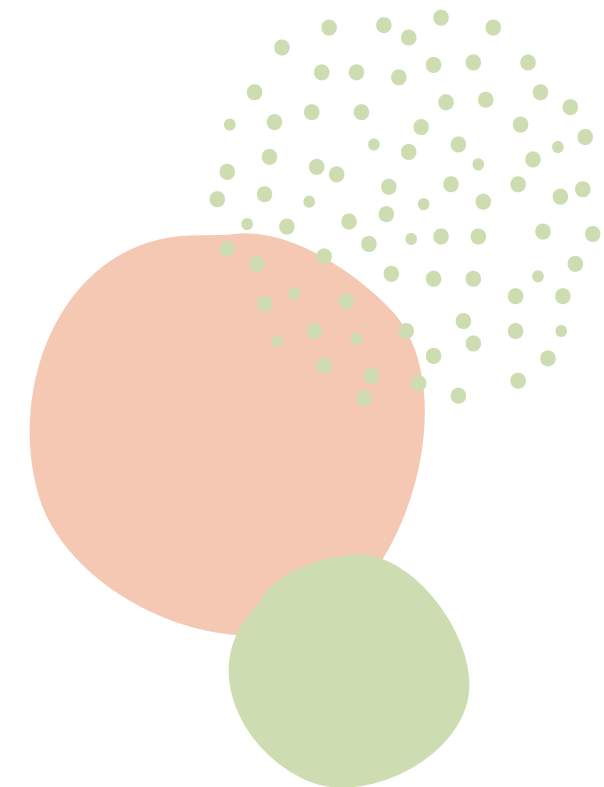
## The characteristics of developing countries in the world:

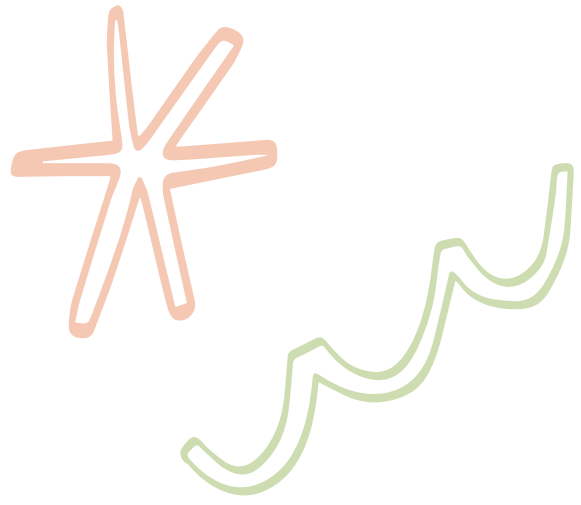
- Having a low level of per capita income
  - High birth rate
  - Import more goods from other countries
  - Number of poor people
  - Not having enough capital
- 



# The characteristics of developed countries in the world:

- Gross Domestic Product
- Gross National Income
- Income per capita
- Infrastructure
- Standard of living





Is there a difference in social capital in developing and developed countries?

YANDIEV (2023) made a research under the title "The Theory of Social Capital and Its Manifestation: The Case of The Economies of Developed and Developing Countries".

The results shows that there are differences in social capital in developing and developed countries.



How is the social capital of farmers  
related to the adoption of  
technological innovations?



## Case study in Indonesia

Social Capital in Innovation Diffusion and Development of Horticulture Sector as a Basis for Local Economic Development - Tjokropandojo, Aqmarini, Fiisabiilillah (2019).

The result shows that **social capital** in economic activities or social attachment and the trust of the horticultural farming community in economic activities is **a driving force for** the emergence of new ideas, practices and products and their dissemination to all farmers, so that it will increase farmer productivity.

## Case study in India

Farmers' Social Networks and Adoption of Modern Crop Varieties in India - Negi *et al.*, (2020).

**The findings show** that the social networks of modern crop varieties' adopters are stronger than those of their non-adopters. Further, it is found that the adoption of modern varieties is strongly influenced by social networks, but their influence varies across crops depending on the stage of varietal diffusion.

## Case study in China

The Impact of Social Capital on Farmers' Willingness to Adopt New Agricultural Technologies: Empirical Evidence from China - Han *et al.*, (2022).

**The results show** that 1) social trust has a significant positive impact on farmers' willingness to adopt a new agricultural technologies; 2) social networks influence farmers' technology adoption behavior differently; 3) demographic change plays a moderating role in the impact of social capital on farmers' willingness to adapt new agricultural technologies; 4) in the eastern and central regions of China, social capital has a significant positive impact on farmers' adoption of new agricultural technologies.

## Case study in Ethiopia

Innovating Social Connectedness for Agricultural Innovations in Eastern Ethiopia- Wedajo and Jilito (2020).

**This study concludes that** stakeholders within extension systems should support and strengthen the locally established society's associations to broaden agricultural innovations. In general, this study recommends the necessity to integrate the applications of society's mutual support associations for the development of agricultural innovations.

## Case study in Ghana

Agricultural Technologies Adoption and Smallholder Farmers' Welfare: Evidence from Northern Ghana- Adams and Jumpah (2021).

**The results show** that regional location, educational level, age, and Farmer Base Organisation (FBO) membership are the main determinants of technology adoption among smallholder farmers.

# CONCLUSION

1. Social capital has different roles and impacts in developing and developed countries
2. Learning from case studies from various countries, we can see that social capital in its role in technological adoption and innovation in farming communities can have both positive and negative impacts.

## REFERENCES

YANDIEV, A. A. (2023). The theory of social capital and its manifestation: The case of the economies of developed and developing countries. *Economic Analysis: Theory and Practice*, 22(3), 426–444. doi:10.24891/ea.22.3.426

Tjokropandojo, D. S., Aqmarini, A., & Fiisabiilillah, D. F. (2019). Modal Sosial dalam Menumbuhkan dan Mendifusikan Inovasi Pertanian Hortikultura sebagai Basis Pengembangan Ekonomi Lokal Studi Kasus: Kabupaten Bandung dan Bandung Barat. *TATALOKA*, 21(1), 115–128. doi:10.14710/tataloka.21.1.115-128

Negi, Digvijay S.; Birthal, Pratap S.; Kumar, Anjani; and Tripathi, Gaurav. (2020). Farmers' social networks and adoption of modern crop varieties in India. IFPRI Discussion Paper 1918. Washington, DC: International Food Policy Research Institute (IFPRI). <https://doi.org/10.2499/p15738coll2.133684>

# REFERENCES

Han, M., Liu, R., Ma, H., Zhong, K., Wang, J., & Xu, Y. (2022). The impact of social capital on farmers' willingness to adopt new agricultural technologies: Empirical evidence from China. *The Impact of Social Capital on Farmers' Willingness to Adopt New Agricultural Technologies: Empirical Evidence from China*, 12(9), 1368. doi:10.3390/agriculture12091368

Wedajo, D. Y., & Jilito, M. F. (2020). Innovating Social Connectedness for Agricultural Innovations in Eastern Ethiopia, 6(1), 1–16. doi:10.1080/23311932.2020.1809943

Adams, A., & Jumpah, E. T. (2021). Agricultural Technologies Adoption and Smallholder Farmers' Welfare: Evidence from Northern Ghana, 9(1), 1–19. doi:10.1080/23322039.2021.2006905

On the next chapter, we'll do End of Semester  
Evaluation

Do you have any question?

Do not hesitate to contact me through  
e-mail:

[damaradinda.zebua@uksw.edu](mailto:damaradinda.zebua@uksw.edu)

THANK YOU