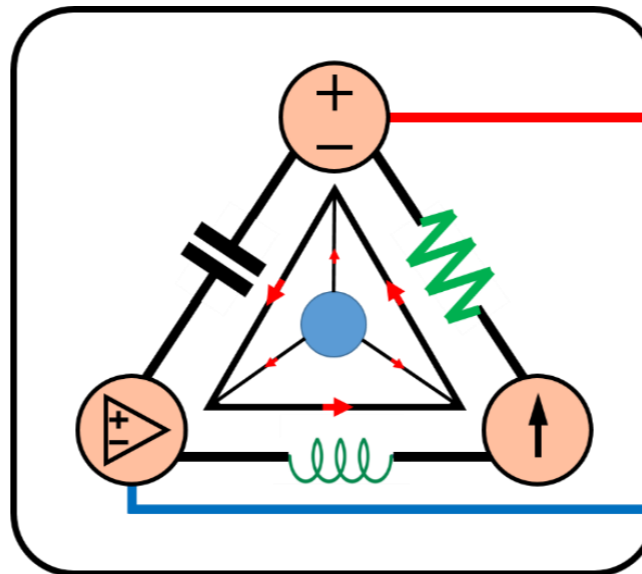


**1-Mavzu: Kirish. O'zgarmas tok zanjiri. Asosiy tushunchalar.**

(Lecture-1: DC Circuits. Basic Concepts)

**1-Mavzusi bo'yicha tekshirish uchun savollarning javobi**

*(Test answers of the Lecture-1)*



**Lecturer: Ph.D., Yusupov Sarvarbek**

*Toshkent Kimyo Xalqaro Universiteti  
"Mashinasozlik texnologiyasi" kafedrasida  
Toshkent shahri, Usmon Nosir, 156-uy.*

# TEKSHIRISH UCHUN SAVOLLAR!

1.1. Bir millivolt voltning milliondan bir qismidir.

- A) to'g'ri.                      B) noto'g'ri.

1.2. *Mikro* prefiks quyidagini anglatadi.

- A)  $10^6$ .    B)  $10^3$ .    C)  $10^{-3}$ .    D)  $10^{-6}$ .

1.3. 2 000 000 V kuchlanishni SI ning o'qli karrali ifodalanishini belgilang.

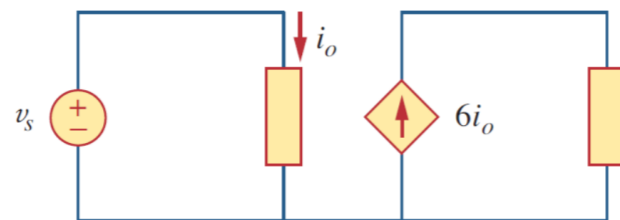
- A) 2 mV.    B) 2 kV.    C) 2 MV.    D) 2 GV.

1.4. Har soniyada ma'lum bir nuqtadan o'tadigan 2 C zaryad 2 A tok kuchiga tengdir.

- A) to'g'ri.                      B) noto'g'ri.

1.5. Tok kuchining birligi nima?

- A) kulon.    B) amper.                      C) volt.                      D) joul.



1.24-rasm.

1.6. Kuchlanish nimada o'lchanadi?

- A) vatlarda.                      B) amperlarda.                      C) voltlarda.  
D) soniyadagi joul.

1.7. Dielektrik materialni zaryadlovchi 4 A tok 6 soniyadan keyin 24 C zaryad to'playdi.

- A) to'g'ri.                      B) noto'g'ri.

1.8. 10 A tok ishlab chiqaradigan 1,1 kVt tosterdagi kuchlanishni toping.

- A) 11 kV.                      B) 1100 V.                      C) 110 V.                      D) 11 V.

1.9. Bulardan qaysi biri elektr kattalik emas?

- A) zaryad.    B) vaqt.                      C) kuchlanish.                      D) tok kuchi.  
E) quvvat.

1.10. 1.24-rasmdagi bog'liq bo'lgan manbani toping.

- A) kuchlanish bilan boshqariladigan kuchlanish manbai.  
B) tok kuchi bilan boshqariladigan kuchlanish manbai.  
C) kuchlanish bilan boshqariladigan tok kuchi manbai.  
D) tok kuchi bilan boshqariladigan tok kuchi manbai.

## TEST JAVOBLARI

*Javoblar: 1.1b, 1.2d, 1.3c, 1.4a, 1.5b, 1.6c, 1.7a, 1.8c, 1.9b, 1.10d*

Savollar	1	2	3	4	5	6	7	8	9	10
Javoblar (talabaning javoblari)										
To‘g‘ri javob	<b>B</b>	<b>D</b>	<b>C</b>	<b>A</b>	<b>B</b>	<b>C</b>	<b>A</b>	<b>C</b>	<b>B</b>	<b>D</b>
*To‘g‘ri javobga – 1, *Noto‘g‘ri javobga – 0. $\Sigma =$										

**\*Izoh:** Talaba to‘g‘ri va noto‘g‘ri javoblarga qo‘ygan **1** av **0** sonlarini yig‘indisini hisoblaydi. Hosil bo‘lgan qiymatni quyidagi shkala bo‘yicha solishtirib, mavzuni o‘zlashtirish darajasini bilib olishi mumkin.

**Natija** Qoniqarli va Qoniqarsiz chiqsa, mavzuni qayta o‘rganishi tavsiya etiladi!!!

“A‘lo”: 10-9 \_\_\_\_\_

“Yaxshi”: 7-8 \_\_\_\_\_

“Qoniqarli”: 5-6 \_\_\_\_\_

“Qoniqarsiz”: 0-4 \_\_\_\_\_