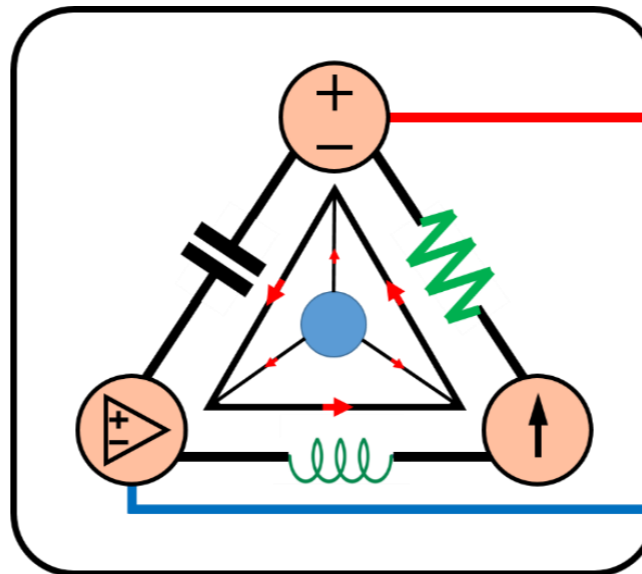


3-Mavzu: Zanjirlarni tahlil qilish usullari.

(Lecture-3: Methods of Analysis)

3-Mavzusi bo‘ycha tekshirish uchun savollarning javobi

(Test answers of the Lecture-3)

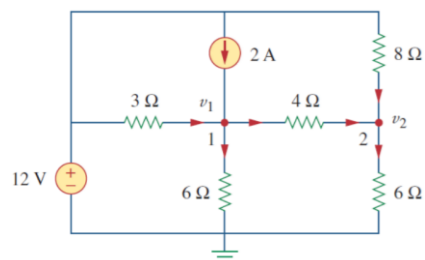


Lecturer: Ph.D., Yusupov Sarvarbek

*Toshkent Kimyo Xalqaro Universiteti
"Mashinasozlik texnologiyasi" kafedrasida
Toshkent shahri, Usmon Nosir, 156-uy.*

TEKSHIRISH UCHUN SAVOLLAR!

3.1. 3.19-rasmdagi zanjirning 1-tugunida KCLni qo'llash quyidagilarni beradi:



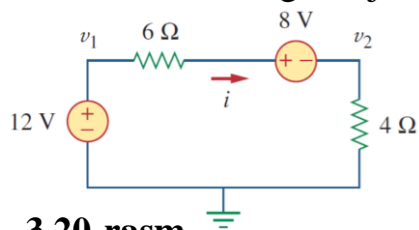
- A) $2 + \frac{12-u_1}{3} = \frac{u_1}{6} + \frac{u_1-u_2}{4}$.
 B) $2 + \frac{u_1-12}{3} = \frac{u_1}{6} + \frac{u_2-u_1}{4}$.
 C) $2 + \frac{12-u_1}{3} = \frac{0-u_1}{6} + \frac{u_1-u_2}{4}$.
 D) $2 + \frac{u_1-12}{3} = \frac{0-u_1}{6} + \frac{u_2-u_1}{4}$.

3.19-rasm.

3.2. 3.19-rasmdagi zanjirning 2-tugunida KCLni qo'llash quyidagilarni beradi:

- A) $\frac{u_2-u_1}{4} + \frac{u_2}{8} = \frac{u_2}{6}$.
 B) $\frac{u_1-u_2}{4} + \frac{u_2}{8} = \frac{u_2}{6}$.
 C) $\frac{u_1-u_2}{4} + \frac{12-u_2}{8} = \frac{u_2}{6}$.
 D) $\frac{u_2-u_1}{4} + \frac{u_2-12}{8} = \frac{u_2}{6}$.

3.3. 3.20-rasmdagi zanjir uchun u_1 va u_2 quyidagicha bog'langan:



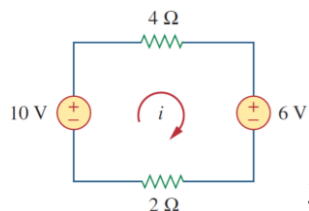
- A) $u_1 = 6i + 8 + u_2$.
 B) $u_1 = 6i - 8 + u_2$.
 C) $u_1 = -6i + 8 + u_2$.
 D) $u_1 = -6i - 8 + u_2$.

3.20-rasm.

3.4. 3.20-rasmdagi zanjir uchun u_2 quyidagiga teng:

- A) -8 V. B) -1,6 V. C) 1,6 V. D) 8 V.

3.5. 3.21-rasmdagi zanjir uchun i tok kuchi quyidagiga teng:



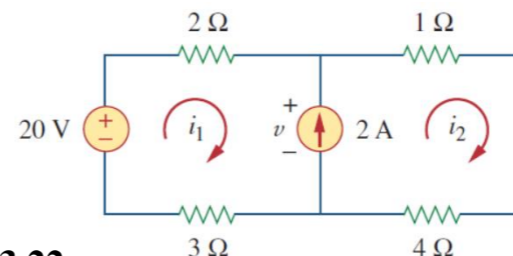
3.21-rasm.

- A) -2,667 A.
 B) -0,667 A.
 C) 0,667 A.
 D) 2,667 A.

3.6. 3.21-rasmdagi zanjir uchun kontur (*loop*) tenglamasi:

- A) $-10 + 4i + 6 + 2i = 0$. B) $10 + 4i + 6 + 2i = 0$.
 C) $10 + 4i - 6 + 2i = 0$. D) $-10 + 4i - 6 + 2i = 0$.

3.7. 3.22-rasmdagi zanjir uchun i_1 tok kuchi quyidagiga teng:



- A) 4 A.
 B) 3 A.
 C) 2 A.
 D) 1 A.

3.22-rasm.

3.8. 3.22-rasm zanjiridagi tok kuchi manbaini kesib o'tuvchi kuchlanish u quyidagiga teng:

- A) 20 V. B) 15 V. C) 10 V. D) 5 V.

3.9. Tok kuchi bilan boshqariladigan kuchlanish manbai uchun *PSpice* qism nomi:

- A) EX. B) FX. C) HX. D) GX.

3.10. Quyidagi gaplardan qaysi biri IPROBE psevdokomponentiga tegishli emas:

- A) U ketma-ket ulanishi kerak.
 B) U shaxobcha tok kuchini yo'naltiradi.
 C) U ulangan shaxobcha orqali tok kuchini ko'rsatadi.
 D) U kuchlanishni parallel ulash orqali ko'rsatish uchun ishlatilishi mumkin.
 E) U faqat o'zgarmas tok tahlili uchun ishlatiladi.
 F) U muayyan zanjir elementiga mos kelmaydi.

TEST JAVOBLARI

Javoblar: 3.1a, 3.2c, 3.3a, 3.4c, 3.5c, 3.6a, 3.7d, 3.8b, 3.9c, 3.10b, d.

Savollar	1	2	3	4	5	6	7	8	9	10
Javoblar (talabaning javoblari)										
To‘g‘ri javob	A	C	A	C	C	A	D	B	C	B D
*To‘g‘ri javobga – 1, *Noto‘g‘ri javobga – 0. $\Sigma =$										

***Izoh:** Talaba to‘g‘ri va noto‘g‘ri javoblarga qo‘ygan **1** av **0** sonlarini yig‘indisini hisoblaydi. Hosil bo‘lgan qiymatni quyidagi shkala bo‘yicha solishtirib, mavzuni o‘zlashtirish darajasini bilib olishi mumkin.

Natija Qoniqarli va Qoniqarsiz chiqsa, mavzuni qayta o‘rganishi tavsiya etiladi!!!

“A‘lo”: 10-9 _____

“Yaxshi”: 7-8 _____

“Qoniqarli”: 5-6 _____

“Qoniqarsiz”: 0-4 _____