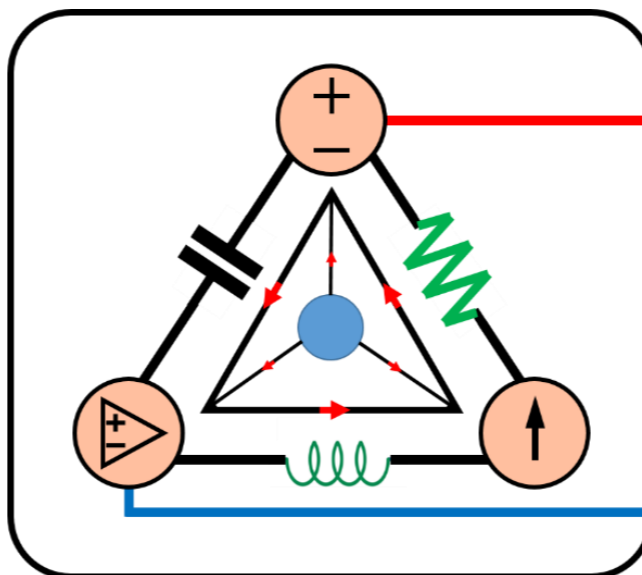


6-Mavzu: Kondensator va induktiv g'altak.

(Lecture-6: Capacitors and Inductors)

6-Mavzusi bo'yicha tekshirish uchun savollarning javobi

(Test answers of the Lecture-6)



Lecturer: Ph.D., Yusupov Sarvarbek

*Toshkent Kimyo Xalqaro Universiteti
"Mashinasozlik texnologiyasi" kafedrasida
Toshkent shahri, Usmon Nosir, 156-uy.*

TEKSHIRISH UCHUN SAVOLLAR!

6.1. 5 F kondensator 120 V manba orqali ulanganda qanday zaryad bo'ladi?

- A) 600 C. B) 300 C. C) 24 C. D) 12 C.

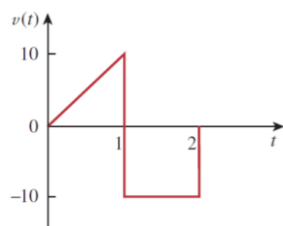
6.2. Sig'im nimada o'lchanadi?

- A) kulonlarda. B) joullarda. C) genrilarda. D) faradlarda.

6.3. Kondensatorning umumiy zaryadi ikki baravar ko'payganda, energiya saqlanadimi?

- A) o'zgarishsiz qoladi. B) yarmiga qisqartiriladi.
C) ikki baravar ko'payadi. D) to'rt barobar ko'payadi.

6.4. 6.28-rasmdagi kuchlanish to'lqin shakli haqiqiy kondensator bilan bog'lanishi mumkinmi?



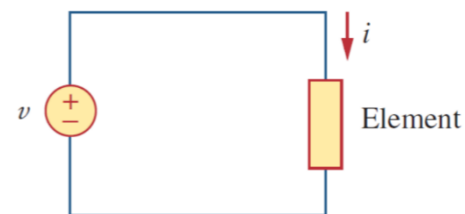
6.28-rasm.

- A) ha.
B) yo'q.

6.5. 4 mF kondensator bilan parallel ravishda ikkita 40 mF ketma-ket ulangan kondensatorning umumiy sig'imini toping?

- A) 3,8 mF. B) 5 mF. C) 24 mF. D) 44 mF.

6.6. 6.29-rasmda, agar $i = \cos 4t$ va $u = \sin 4t$ bo'lsa, u qanday element?



6.29-rasm.

- A) rezistor.
B) kondensator.
C) induktor.
D) operatsion kuchaytirgich.

6.7. 5 H induktorning tok kuchi 0,2 soniyada 3 A ga o'zgartiradi. Induktorning terminallarida hosil bo'ladigan kuchlanishni toping.

- A) 75 V. B) 8,888 V. C) 3 V. D) 1,2 V.

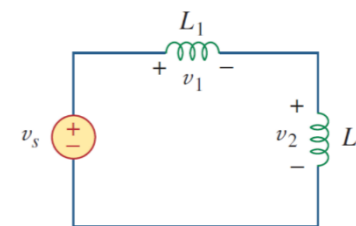
6.8. Agar 10 mH induktordan o'tadigan tok noldan 2 A ga oshsa, induktorda qancha energiya saqlanadi?

- A) 40 mH. B) 20 mH. C) 10 mH. D) 5 mH.

6.9. Parallel bo'lgan induktorlar parallel ravishda rezistorlar kabi birlashtirilishi mumkinmi?

- A) to'g'ri. B) noto'g'ri.

6.10. 6.30-rasmdagi zanjir uchun kuchlanishni taqsimlovchi formulasi qaysi?



6.30-rasm.

- A) $u_1 = \frac{L_1+L_2}{L_1} u_s$.
B) $u_1 = \frac{L_1+L_2}{L_2} u_s$.
C) $u_1 = \frac{L_2}{L_1+L_2} u_s$.
D) $u_1 = \frac{L_1}{L_1+L_2} u_s$.

TEST JAVOBLARI

Javoblar: 6.1a, 6.2d, 6.3d, 6.4b, 6.5c, 6.6b, 6.7a, 6.8b, 6.9a, 6.10d.

| Savollar | 1 | 2 | 3 | 4 | 5 | 6 | 7 | 8 | 9 | 10 |
|---|---|---|---|---|---|---|---|---|---|----|
| Javoblar (talabaning javoblari) | | | | | | | | | | |
| To‘g‘ri javob | A | D | D | B | C | B | A | B | A | D |
| *To‘g‘ri javobga – 1, *Noto‘g‘ri javobga – 0. $\Sigma =$ | | | | | | | | | | |

***Izoh:** Talaba to‘g‘ri va noto‘g‘ri javoblarga qo‘ygan **1** av **0** sonlarini yig‘indisini hisoblaydi. Hosil bo‘lgan qiymatni quyidagi shkala bo‘yicha solishtirib, mavzuni o‘zlashtirish darajasini bilib olishi mumkin.

Natija Qoniqarli va Qoniqarsiz chiqsa, mavzuni qayta o‘rganishi tavsiya etiladi!!!

“A‘lo”: 10-9 _____

“Yaxshi”: 7-8 _____

“Qoniqarli”: 5-6 _____

“Qoniqarsiz”: 0-4 _____