

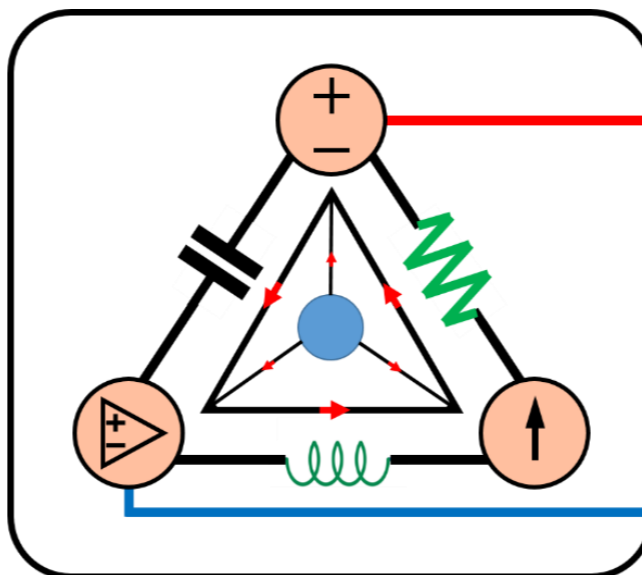
## 7-Mavzu: Birinchi tartibli elektr zanjiri.

(7<sup>th</sup> Topic: First-Order Circuit)

## 7-Mavzu bo‘yicha tekshirish uchun savollarning javobi

*(Test answers of the 7<sup>th</sup> Topic)*

*7-8-haftalar uchun  
For the 7<sup>th</sup> -8<sup>th</sup> weeks*



**Lecturer: Ph.D., Yusupov Sarvarbek**

*Toshkent Kimyo Xalqaro Universiteti  
“Mashinasozlik texnologiyasi” kafedrasida  
Toshkent shahri, Usmon Nosir, 156-uy.*

# TEKSHIRISH UCHUN SAVOLLAR!

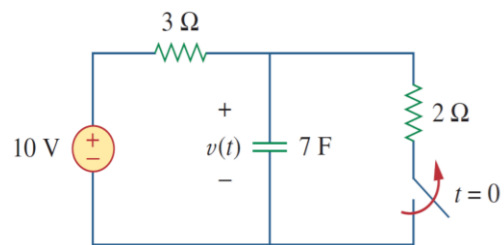
7.1.  $RC$  sxemasi  $R = 2 \Omega$  va  $C = 4 F$  ga ega. Vaqt doimiysi:  
 A) 0,5 s.    B) 2 s.    C) 4 s.    D) 8 s.    E) 15 s.

7.2.  $RL$  sxemasi  $R = 2 \Omega$  va  $L = 4 H$  ga ega. Vaqt doimiysi:  
 A) 0,5 s.    B) 2 s.    C) 4 s.    D) 8 s.    E) 15 s.

7.3.  $R = 2 \Omega$  va  $C = 4 F$  bo'lgan  $RC$  zanjiridagi kondensator zaryadlanmoqda. Kondensator kuchlanishining barqaror holat qiymatining 63,2 foiziga yetishi uchun zarur bo'lgan vaqt:  
 A) 2 s.    B) 4 s.    C) 8 s.    D) 16 s.    E) hech qaysisi.

7.4.  $RL$  zanjirida  $R = 2 \Omega$  va  $L = 4 H$  bo'ladi. Induktor tok kuchi uning barqaror holat qiymatining 40 foiziga yetishi uchun zarur bo'lgan vaqt:  
 A) 0,5 s.    B) 1 s.    C) 2 s.    D) 4 s.    E) hech qaysisi.

7.5. 7.42-rasmdagi zanjirda  $t = 0$  dan oldingi kondensator kuchlanishi:



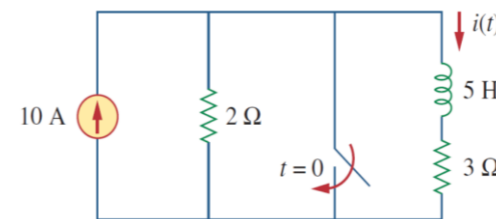
7.42-rasm.

- A) 10 V.
- B) 7 V.
- C) 6 V.
- D) 4 V.
- E) 0 V.

7.6. 7.42-rasmdagi zanjir uchun  $u(\infty)$ :

- A) 10 V.    B) 7 V.    C) 6 V.    D) 4 V.    E) 0 V.

7.7. 7.43-rasmdagi zanjirda  $t = 0$  dan oldingi induktor tok kuchi:



7.43-rasm.

- A) 8 A.
- B) 6 A.
- C) 4 A.
- D) 2 A.
- E) 0 A.

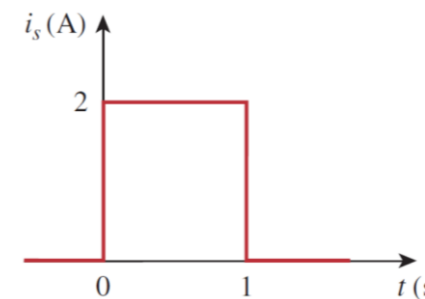
7.8. 7.43-rasmdagi zanjir uchun  $i(\infty)$ :

- A) 10 A.    B) 6 A.    C) 4 A.    D) 2 A.    E) 0 A.

7.9. Agar  $u_s$   $t = 0$  da 2 V dan 4 V ga o'zgarsa,  $u_s$  ni quyidagicha ifodalashimiz mumkin:

- A)  $\delta(t)V$ .    B)  $2u(t)V$ .    C)  $2u(-t) + 4u(t)V$ .
- D)  $2 + 2u(t)V$ .    E)  $4u(t) - 2V$ .

7.10. 7.44-rasmdagi impulsni yakkalik funksiyalari bilan quyidagicha ifodalash mumkin:



7.44-rasm.

- A)  $2u(t) + 2u(t - 1)V$ .
- B)  $2u(t) - 2u(t - 1)V$ .
- C)  $2u(t) - 4u(t - 1)V$ .
- D)  $2u(t) + 4u(t - 1)V$ .

## TEST JAVOBLARI

*Javoblar: 7.1d, 7.2b, 7.3c, 7.4b, 7.5d, 7.6a, 7.7c, 7.8e, 7.9c,d, 7.10b.*

Savollar	1	2	3	4	5	6	7	8	9	10
Javoblar (talabaning javoblari)										
To‘g‘ri javob	D	B	C	B	D	A	C	E	CD	B
*To‘g‘ri javobga – 1, *Noto‘g‘ri javobga – 0. $\Sigma =$										

**\*Izoh:** Talaba to‘g‘ri va noto‘g‘ri javoblarga qo‘ygan **1** av **0** sonlarini yig‘indisini hisoblaydi. Hosil bo‘lgan qiymatni quyidagi shkala bo‘yicha solishtirib, mavzuni o‘zlashtirish darajasini bilib olishi mumkin.

**Natija** Qoniqarli va Qoniqarsiz chiqsa, mavzuni qayta o‘rganishi tavsiya etiladi!!!

“A‘lo”: 10-9 \_\_\_\_\_

“Yaxshi”: 7-8 \_\_\_\_\_

“Qoniqarli”: 5-6 \_\_\_\_\_

“Qoniqarsiz”: 0-4 \_\_\_\_\_