

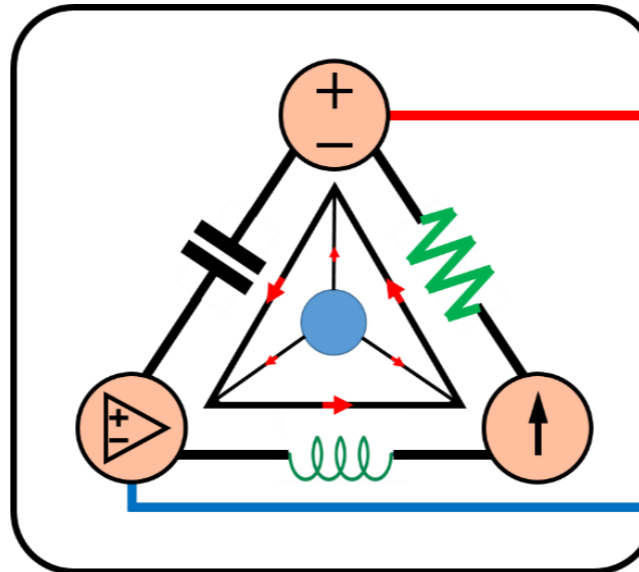
9-Mavzu: O‘zgaruvchan tok zanjiri. Sinusoidlar va fazalar.

(9th Topic: AC Circuit. Sinusoids and Phasors.)

9-Mavzu bo‘ycha tekshirish uchun savollarning javobi

(Test answers of the 9th Topic)

*11-12-haftalar uchun
For the 11th -12th weeks*



Lecturer: Ph.D., Yusupov Sarvarbek

*Toshkent Kimyo Xalqaro Universiteti
“Mashinasozlik texnologiyasi” kafedrasida
Toshkent shahri, Usmon Nosir, 156-uy.*

TEKSHIRISH UCHUN SAVOLLAR!

9.1. Quyidagilardan qaysi biri sinusoid $A \cos \omega t$ ni ifodalashning to'g'ri usuli emas?

- A) $A \cos 2\pi ft$. B) $A \cos(2\pi t/T)$.
 C) $A \cos \omega(t - T)$. D) $A \sin(\omega t - 90^\circ)$.

9.2. Belgilangan oraliqlardan keyin takrorlanadigan funksiya deyiladi:

- A) faza. B) garmonik. C) davriy. D) reaktiv.

9.3. Ushbu chastotalarning qaysi birining davri qisqaroq?

- A) 1 krad/s. B) 1 kHz.

9.4. Agar $u_1 = 30 \sin(\omega t + 10^\circ)$ va $u_2 = 20 \sin(\omega t + 50^\circ)$ bo'lsa, ushbu bayonotlarning qaysi biri to'g'ri?

- A) $u_1 u_2$ dan oldinda. A) $u_2 u_1$ dan oldinda.
 B) $u_1 u_2$ dan ortda. C) $u_2 u_1$ dan ortda.
 D) u_1 va u_2 fazada.

9.5. Induktordagi kuchlanish tok kuchini 90° ga olib boradi.

- A) To'g'ri. B) Xato.

9.6 Impidansning hayoliy qismi deyiladi:

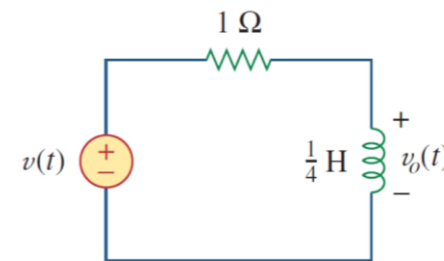
- A) resistance. B) admittance.
 C) susceptance. D) conductance. E) reactance.

9.7 Kondensatorning empedansi chastotaning ortishi bilan ortadi.

- A) To'g'ri. B) Xato.

9.8. 9.28-rasmdagi chiqish kuchlanishi $u_0(t)$ qaysi chastotada kirish kuchlanishiga $u(t)$ teng bo'ladi?

- A) 0 rad/s. B) 1 rad/s. C) 4 rad/s.
 D) rad/s. E) yuqoridagilarning hech biri.



9.28-rasm.

9.9. Ketma-ket RC zanjiri $|U_R| = 12 V$ va $|U_C| = 5 V$ ga ega. Ta'minot kuchlanishining kattaligi:

- A) -7 V. B) 7 V. C) 13 V. D) 17 V.

9.10. Ketma-ket RCL zanjiri $R = 30 \Omega$, $X_C = 50 \Omega$ va $X_L = 90 \Omega$ ga ega. Zanjirning impedansi:

- A) $30 + j140 \Omega$. B) $30 + j40 \Omega$.
 C) $30 - j40 \Omega$. D) $-30 - j40 \Omega$.
 E) $-30 + j40 \Omega$.

TEST JAVOBLARI

Javoblar: 9.1d, 9.2c, 9.3b, 9.4b,d, 9.5a, 9.6e, 9.7b, 9.8d, 9.9c; 9.10b.

Savollar	1	2	3	4	5	6	7	8	9	10
Javoblar (talabaning javoblari)										
To‘g‘ri javob	D	C	B	B,D	A	E	B	D	C	B
*To‘g‘ri javobga – 1, *Noto‘g‘ri javobga – 0. $\Sigma =$										

***Izoh:** Talaba to‘g‘ri va noto‘g‘ri javoblarga qo‘ygan **1** av **0** sonlarini yig‘indisini hisoblaydi. Hosil bo‘lgan qiymatni quyidagi shkala bo‘yicha solishtirib, mavzuni o‘zlashtirish darajasini bilib olishi mumkin.

Natija Qoniqarli va Qoniqarsiz chiqsa, mavzuni qayta o‘rganishi tavsiya etiladi!!!

“A‘lo”: 9-10 _____

“Yaxshi”: 7-8 _____

“Qoniqarli”: 5-6 _____

“Qoniqarsiz”: 0-4 _____