



Course: Software Technologies and Enterprise Architecture

WEEK 13: Enterprise Architecture Tools

Lemlem Kassa(Dr.)

Addis Ababa Science and Technology University (AASTU)

June , 2026

WEEK 13: Enterprise Architecture Tools

Contents

- Overview of Enterprise Architecture Tools
- Benefits of Enterprise Architecture Tools
- Top Enterprise Architect Tools for 2025
- How to Choose the Best Enterprise Architect Tools?
- Key Advantages Of Using Enterprise Architecture Tools



WEEK 13: Learning Objectives



By the end of this unit, the student will be able to

- Define Enterprise Architecture (EA) tools and understand how they align an organization's business goals with its IT infrastructure.
- Differentiate between the primary categories of EA tools, specifically traditional modeling/diagramming tools and modern business-focused analytics platforms.
- Identify the core benefits of using EA tools, including creating a single source of truth, establishing governance, enhancing data reusability, and improving organizational agility.
- Evaluate top market EA tools (such as Avolution's ABACUS, Sparx Systems, Ardoq, Bizzdesign Horizon, and Orbus iServer) based on their distinct features, limitations, and use-case suitability.
- Apply key criteria to select the right EA software for an organization by weighing factors like ease of use, scalability, cost, integration capabilities, and team size.
- Outline the implementation process required to successfully deploy EA tools, spanning from defining objectives to selecting the tool and ensuring stakeholder buy-in.

Overview of Enterprise Architecture Tools

- An Enterprise Architecture tool is software designed to support and facilitate the practice of Enterprise Architecture within a large organization.
- The Enterprise Architecture discipline aligns an organization's business goals and processes with its IT infrastructure and technology resources.
- EA platforms help organizations manage and document various aspects of their Enterprise Architecture, enabling better decision-making, optimization, and alignment of resources.

Cont. ..Overview of Enterprise Architecture Tools

Key Types of Enterprise Architecture Tools

- The current market for Enterprise Architecture tools broadly fall into two primary categories as EA tooling has evolved from being purely modeling-centric to being dynamic, data-driven hubs that connect strategy to execution.
- Choosing the right one depends on an organization's specific challenges and goals with EA.

a) Traditional Modeling and Diagramming Tool

b) Business-Focused and Analytics Platforms

[1]. Enterprise Architecture Tools: An Easy Guide to Choosing the Best EA Software for Your Business,” Leah Plotz, Ardoq, 2024. <https://www.ardoq.com/knowledge-hub/enterprise-architecture-tool>

Cont. ..Overview of Enterprise Architecture Tools

a) Traditional Modeling and Diagramming Tools

- These are the foundational EA tools, typically built around a modeling language such as ArchiMate or UML.
- They provide a structured environment for creating and managing detailed architectural diagrams, and are repository-centric, storing all architectural artifacts in a centralized database to ensure consistency and reusability.
- Their strengths lie in deep modeling capability and strict adherence to frameworks such as TOGAF and Zachman.
- However, their complexity typically means a steep learning curve that limits adoption beyond specialist architects, and they require significant manual effort to populate and maintain.

Cont. ..Overview of Enterprise Architecture Tools

b) Business-Focused and Analytics Platforms

- Modern EA platforms prioritize business outcomes and data-driven insights over rigid technical modeling.
- They are designed to be intuitive and collaborative, accessible to stakeholders across the organization, and reliant on automated data-driven visualizations rather than manual diagramming effort.
- These platforms connect the IT landscape directly to business capabilities and strategy, providing analytics, dashboards, and reporting to answer critical business questions such as what is the business impact of retiring a specific application, or where is the organization wasting IT spend.
- They are typically cloud-native SaaS platforms.

Benefits of Enterprise Architecture Tools

a) A single source of truth:

- The central repositories ensure that architects work with accurate information and analyses, making it easy to share data within a team while keeping everything up to date.

b) Governance:

- The central repository governs the format and notation of data, allowing for standardization and easy comparisons.

c) Collection and Validation of Data:

- The central repository collates data from all users, eliminating the need for manual input from architects.
- Architects can still validate the data to ensure its conformity to predefined standards.

Cont. ...Benefits of Enterprise Architecture Tools

d) Reusability:

- Enterprise Architecture tools store building blocks in central repositories, allowing for reuse across diagrams and documents.
- Duplicate items can be identified and rationalized, and changes made to a building block in one diagram will propagate across all other diagrams.

e) Superior Agility:

- Enterprise Architecture tools enable organizations to deliver change faster, allowing for quicker reaction times to opportunities and threats in the business environment.

f) Buy-in from Stakeholders:

- EA tools simplify the presentation of complex architecture processes, making it easier for stakeholders to understand and support projects.

Cont. ...Benefits of Enterprise Architecture Tools

g) Handle complicated MetaModels while offering flexibility:

- EA tools support built-in complex models, reducing the pressure to implement them.

h) Avoid redundancy:

- Central repositories ensure that architects do not gather the same data or perform the same analysis while avoiding the recreation of existing diagrams.

l) Powerful Collaboration:

- EA tools enable architects and business stakeholders to access, read, and modify the same data, simplifying collaboration within the organization.

Cont. ...Benefits of Enterprise Architecture Tools

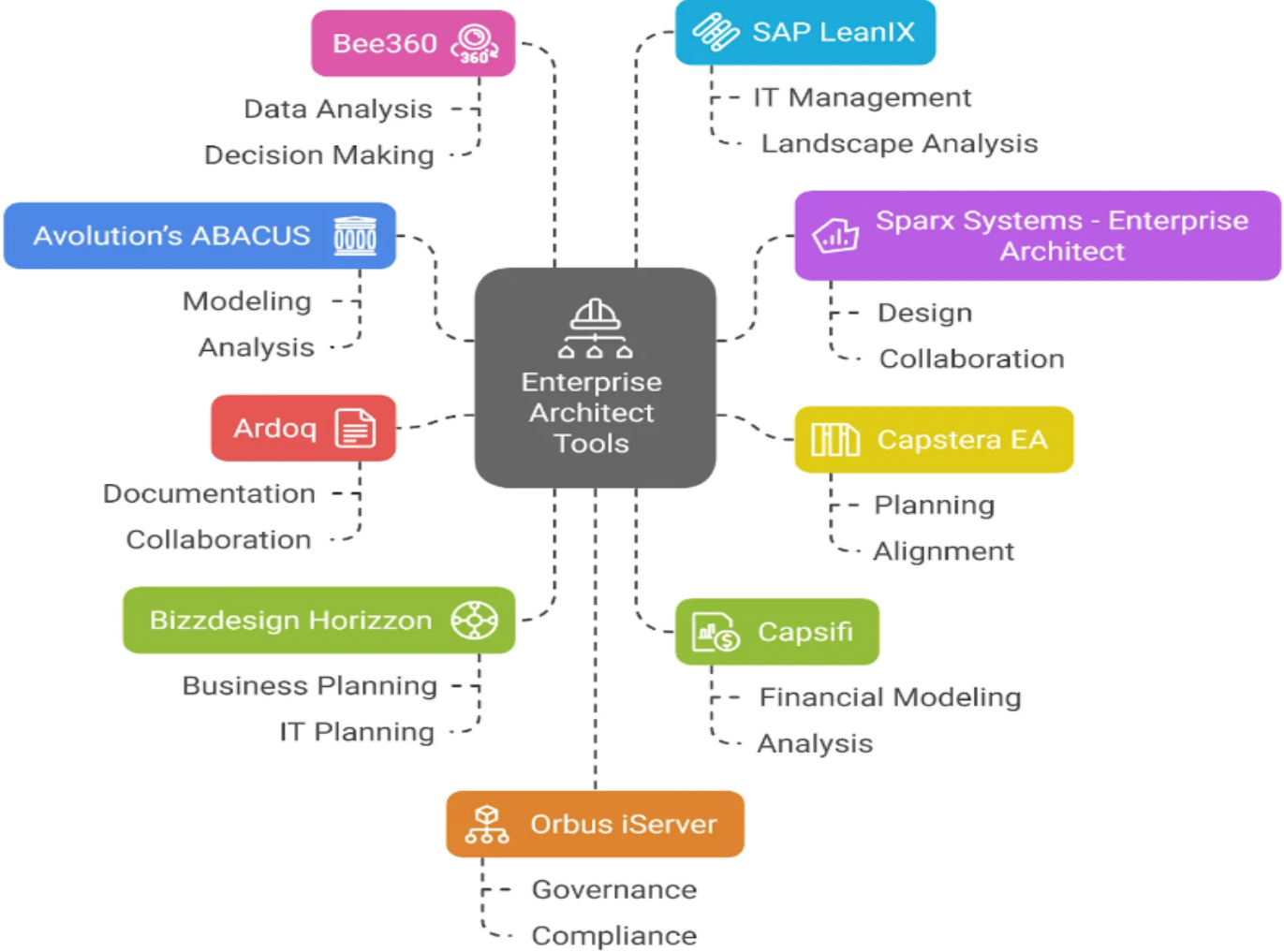
j. Relationships between elements

- Architecture elements and their relationships can be defined, managed, navigated, and analyzed in the architecture repository, saving time and ensuring accuracy.

k. Auto generation of reports and presentations

- EA tools can automatically generate reports and presentations, streamlining the reporting process.

Top Enterprise Architect Tools for 2025



[3]. Top Enterprise Architect Tools, Mukesh Kumar, upGrad, 2025.
<https://www.upgrad.com/blog/enterprise-architect-tools/>

Top Enterprise Architect Tools for 2025

1. Avolution's ABACUS

- A powerful enterprise architecture tool used for modeling, analysis, and design. It allows organizations to tailor their enterprise architecture with customizable views.
- **Key Features**
 - **Customizable Architecture Views:** Allows users to create tailored views based on business needs.
 - **Integrated with Business Process Models:** Enhances data flow analysis and integration.
 - **Data-Driven Insights:** Utilizes real-time data and [SQL](#)-based databases for architecture performance analysis.
- **Benefits:** Offers in-depth flexibility and customization to fit specific business needs. Its data-driven insights enhance decision-making.
- **Limitations:** Requires a learning curve for users unfamiliar with architecture modeling.

Cont. ...Top Enterprise Architect Tools for 2025

2. Sparx Systems - Enterprise Architect

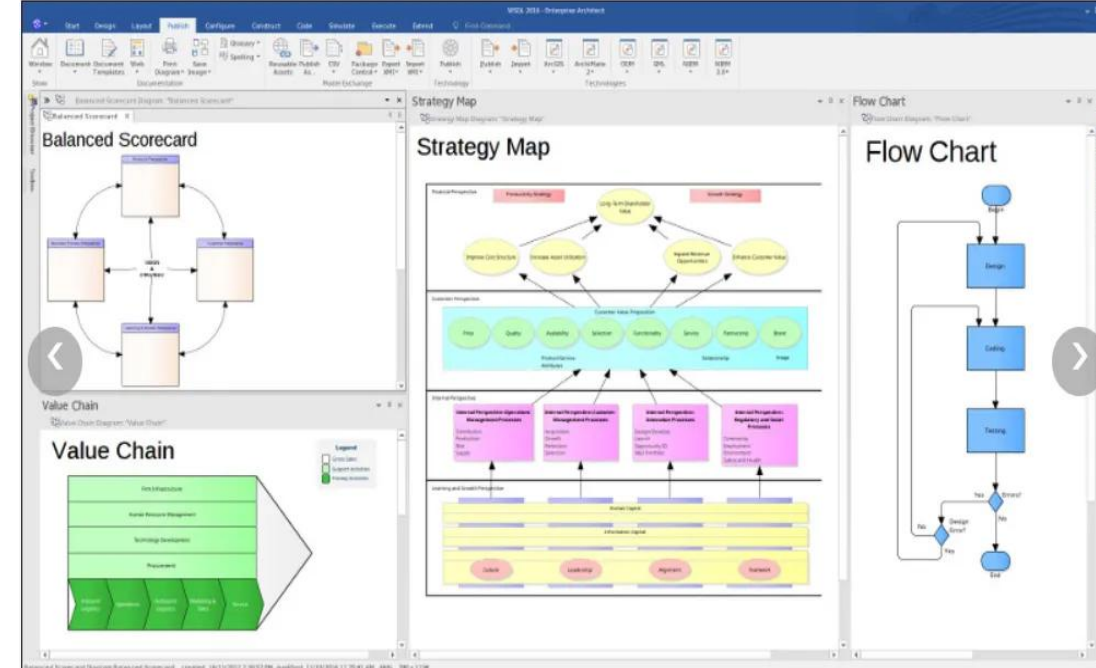
- It is widely used for design, modeling, and documentation.
- It supports a wide variety of modeling languages and provides a comprehensive solution for enterprise architecture.

Key Features

- Supports UML, BPMN, SysML, and others.
- Integration with Other Tools: like Microsoft Office and Visio for extended functionalities.
- Version Control and Collaboration.

Benefits: Its integration capabilities and comprehensive modeling support make it an all-in-one tool for enterprise architects.

Limitations: The vast range of features can be overwhelming for new users.



Cont. ...Top Enterprise Architect Tools for 2025

3. Ardoq

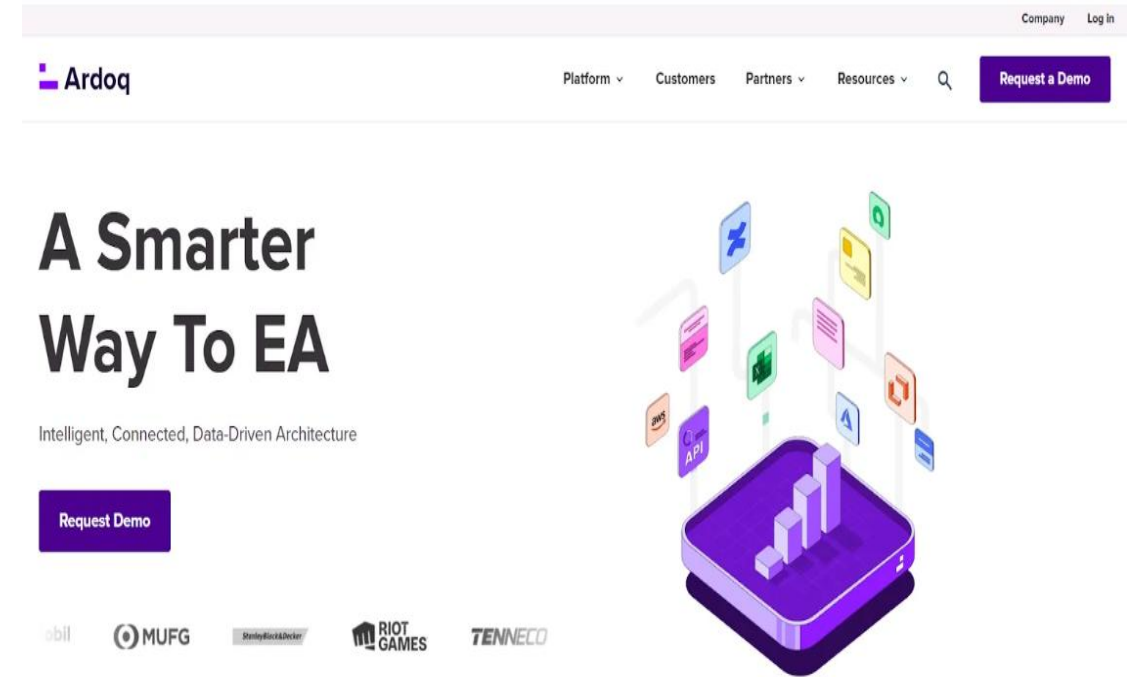
- A tool that specializes in real-time collaboration, helping teams visualize and understand architectural components across the organization.

Key Features

- *Real-Time Collaboration*: Enhances collaboration across teams by offering live feedback and updates.
- *Visualization of Architecture*: Provides powerful visualization tools for architecture diagrams and flowcharts.
- *Advanced Reporting*: Offers customizable and in-depth reporting functionalities.

Benefits: Real-time collaboration and powerful visualization features ensure teams stay aligned and informed.

Limitations: Some users may find the tool lacking in more complex modeling capabilities.



The screenshot shows the Ardoq website homepage. At the top, there is a navigation bar with the Ardoq logo, a search icon, and links for 'Company', 'Log In', 'Platform', 'Customers', 'Partners', and 'Resources'. A prominent purple 'Request a Demo' button is located in the top right corner. The main heading reads 'A Smarter Way To EA' in large, bold, black text. Below this, the tagline 'Intelligent, Connected, Data-Driven Architecture' is displayed. A second purple 'Request Demo' button is positioned below the tagline. To the right of the text is a 3D isometric illustration of a purple server rack with various colorful icons (representing different architectural components or data points) floating around it. At the bottom of the page, there is a row of logos for partner companies: 'abil', 'MUFG', 'DaimlerChrysler', 'RIOT GAMES', and 'TENNECO'.

Cont. ...Top Enterprise Architect Tools for 2025

4. Bizzdesign Horizzon

- A platform designed to streamline enterprise architecture management by providing advanced analytics and reporting tools.

Key Features

- **Advanced Analytics:** Utilizes powerful analytics to assess the effectiveness of architectural decisions.
- **Holistic Reporting:** Provides an integrated view of business processes, IT, and systems.
- **Strategic Planning Support:** Helps align long-term strategic planning with current enterprise architecture.

Benefits: The ability to integrate analytics with architecture management enhances decision-making.

Limitations: Its complexity may make it difficult for smaller teams to fully leverage all its features.



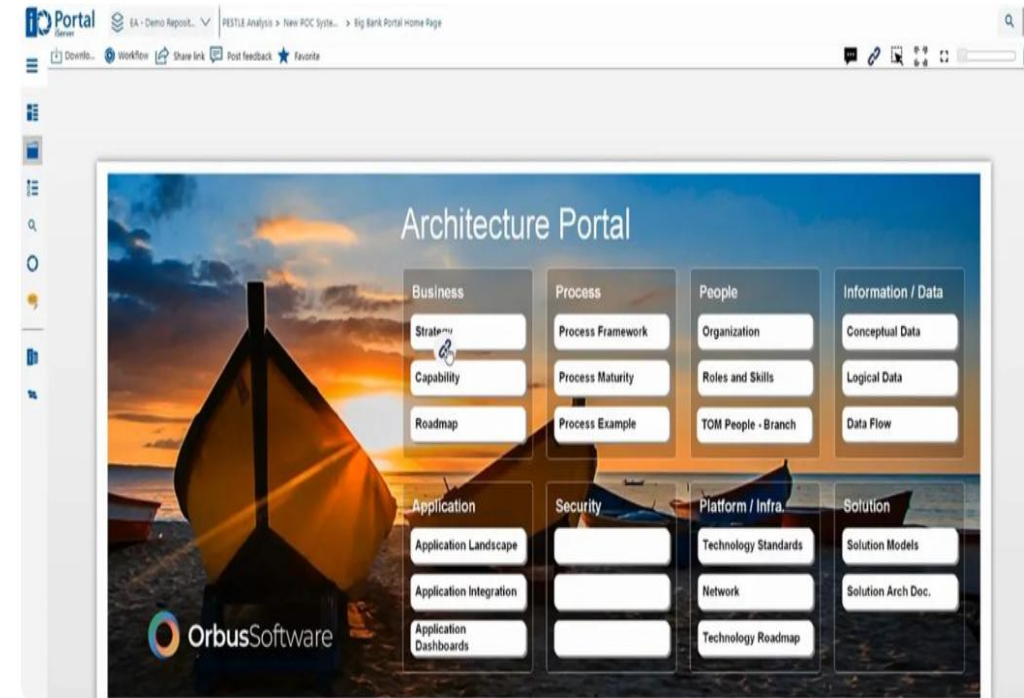
Cont. ...Top Enterprise Architect Tools for 2025

5. Orbus iServer

- Orbus iServer is a comprehensive enterprise architecture tool that offers a range of modeling, analysis, and management features.
- It is particularly suited for large enterprises with complex architectural needs.

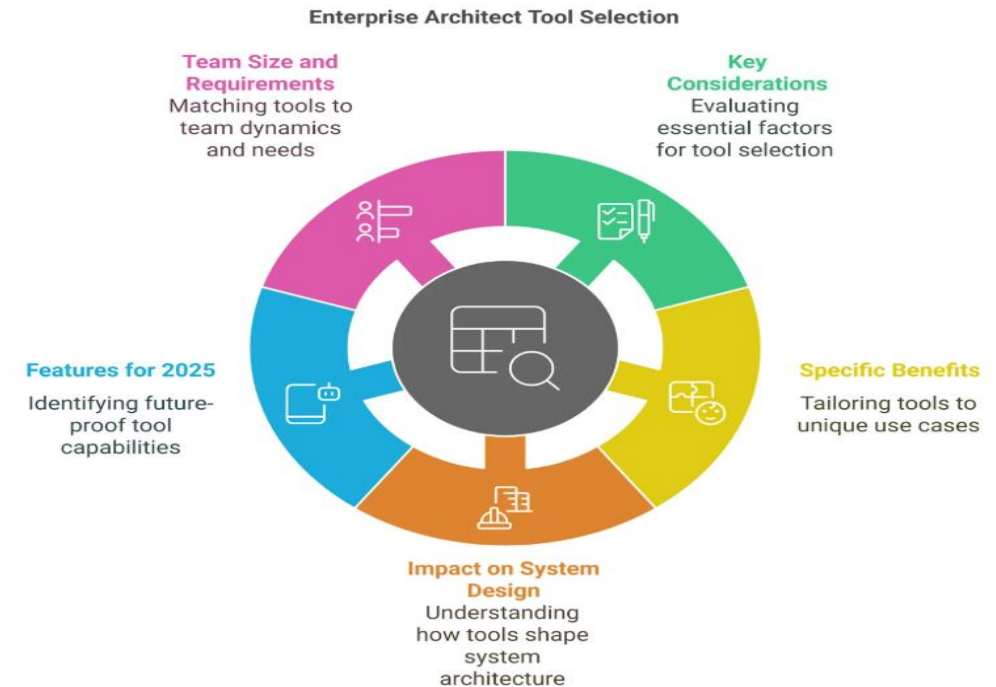
Key Features

- **Rich Library of Models and Frameworks:** Offers a comprehensive library of industry-standard models.
- **Collaborative Platform:** Enables seamless collaboration between teams, ensuring consistency in architectural designs.
- **Customizable Reports:** Provides in-depth reporting tools tailored to enterprise needs.



How to Choose the Best Enterprise Architect Tools?

- It involves careful consideration of various factors.
- These tools can shape how businesses manage their IT infrastructure and align it with business strategies.
- Below are key considerations that will help our select the right tool.
- When choosing an enterprise architecture tool, think about how the tool fits into our organization's workflow.
- Consider ease of use, scalability, integration capabilities, and cost as some of the primary factors.
- These considerations can significantly affect how effectively the tool will be adopted by our team.



Cont. ...How to Choose the Best Enterprise Architect Tools?

Key Considerations

- Several key factors should guide our decision-making process when selecting enterprise architecture tools.
- These elements can directly impact system performance and business outcomes.

a) Ease of Use:

- The tool should be intuitive, enabling easy adoption by your team.
- For example, Sparx Systems – Enterprise Architect is well-regarded for its user-friendly interface, allowing even beginners to quickly start designing and modelling architecture.

Cont. ...How to Choose the Best Enterprise Architect Tools?

b) Scalability:

- A tool's ability to grow with our business is crucial. SAP LeanIX is a cloud-based solution that can easily scale as our organization expands.
- This makes it an ideal choice for businesses looking to future-proof their operations, especially when integrated with containerization technologies like [Docker](#) for enhanced scalability.

c) Cost:

- Cost is always a consideration, so it's important to assess both the initial and ongoing costs of the tool.
- For instance, Avolution's ABACUS offers tiered pricing, allowing you to choose the right features for your organization at an affordable price point.

Cont. ...How to Choose the Best Enterprise Architect Tools?

d) Integration Capabilities:

- A top-tier enterprise architecture tool should integrate seamlessly with existing systems such as CRM or ERP platforms.
- Bizzdesign Horizon stands out by offering strong integration features, ensuring smooth data flow across different departments, which is key for maintaining consistency across the enterprise.
- Many tools like SAP LeanIX also rely on backend technologies such as [Python](#) to facilitate smooth integrations with other platforms.
- By weighing these factors, we can ensure the tool we choose will meet our enterprise architecture needs while being easy to implement and maintain.

Cont. ...How to Choose the Best Enterprise Architect Tools?

Specific Benefits for Different Use Cases

- Different industries have unique requirements, and selecting a tool that caters to these needs can significantly enhance business performance.
- Here's how various tools benefit specific sectors:

a) Healthcare:

- In the healthcare industry, system integration and data security are paramount.
- Tools like QualiWare ApS provide healthcare providers with the ability to model complex systems while ensuring compliance with regulations.
- By enabling seamless integration between critical services like electronic health records (EHR), these tools help streamline operations and improve patient care delivery.

Cont. ...How to Choose the Best Enterprise Architect Tools?

b) Finance:

- Financial institutions require tools that support regulatory compliance and operational efficiency.
- Ardoq is an excellent choice for the finance sector, offering real-time collaboration and robust analytics that help financial organizations track customer data flow and meet regulatory requirements.
- Its data visualisation capabilities make it easier for banks and insurers to monitor system performance and ensure compliance across various departments

Cont. ...How to Choose the Best Enterprise Architect Tools?

c) Technology:

- Tech companies often demand advanced customisation and flexibility.
- Capsifi is tailored to meet these needs by providing real-time insights, advanced modelling features, and collaboration tools.
- It helps technology businesses design, manage, and optimise complex systems, fostering innovation while maintaining operational efficiency.
- For those integrating [blockchain](#)-based technologies, tools like Orbus iServer support managing and optimizing systems that incorporate blockchain solutions, further enhancing security and decentralised data handling.

Cont. .How to Choose the Best Enterprise Architect Tools?

3. Impact on System Design & IT Planning

- The right enterprise architect tool can significantly improve how we approach system design and IT planning.
- These tools streamline processes, improve decision-making, and ensure that IT and business strategies are fully aligned.
- See the key aspects of the impact of architecture management below.

Cont. .How to Choose the Best Enterprise Architect Tools?

a) Enhances System Design:

- A powerful tool like Sparx Systems – Enterprise Architect enables detailed system modeling, allowing teams to create complex architectures with a clear understanding of system interdependencies.
- This is crucial for companies with diverse IT systems.
- For example, a large financial institution could use Sparx Systems to design an architecture that ensures seamless integration of various internal systems.
- This makes it easier to track and manage data flow across departments, while also incorporating cybersecurity measures to protect sensitive information.

Cont. .How to Choose the Best Enterprise Architect Tools?

b) Better Decision-Making:

- Tools such as Bizzdesign Horizzon provide analytics that enable businesses to make data-driven decisions about their IT infrastructure.
- For instance, a manufacturing company might use Bizzdesign to assess how different IT investments, such as upgrading ERP systems, could impact production efficiency and cost-effectiveness.
- These insights help organizations prioritize investments that deliver the most value and align with their strategic goals

Cont. .How to Choose the Best Enterprise Architect Tools?

c) Streamlined Operations:

- By integrating IT and business strategies, enterprise architect tools help reduce operational inefficiencies.
- For example, Planview integrates portfolio management with enterprise architecture, aligning project resources with business goals.
- A large retail company might use Planview to ensure that IT projects support their customer service initiatives, helping to improve the customer experience while maximizing resource usage across the business.

Cont. .How to Choose the Best Enterprise Architect Tools?

4. Features to Look for in 2025

- As enterprise architecture continues to evolve, staying ahead of emerging features can help businesses better manage their systems and integrate innovative technology into their processes.
- Here are some essential features to look for in 2025:

a) AI-Powered Capabilities:

- Artificial Intelligence is transforming enterprise architecture by offering predictive analytics, intelligent decision support, and enhanced process automation.
- **Example:-** tools like Ardoq use AI to analyze architecture models and provide data-driven insights, recommending improvements based on trends and patterns.
- This predictive power helps teams anticipate issues before they arise, improving overall decision-making and planning

Cont. .How to Choose the Best Enterprise Architect Tools?

b) Cloud-Based Solutions:

- With the increasing shift towards remote work and distributed teams, cloud-based solutions have become essential.
- Tools like SAP LeanIX are entirely cloud-based, offering seamless access to data and models from anywhere.
- This ensures scalability and flexibility, enabling businesses to expand infrastructure without worrying about on-premise limitations.

Cont. .How to Choose the Best Enterprise Architect Tools?

c) Real-Time Collaboration Tools:

- Collaboration is key in enterprise architecture projects.
- Tools like Bee360 offer real-time collaboration features that allow multiple team members to work on models simultaneously, making updates instantly visible to all.
- This facilitates alignment across departments, speeds up decision-making, and helps teams stay connected, even if they're working remotely or across different time zones.
- As enterprise architecture continues to advance, these features will become indispensable for organizations looking to enhance efficiency, collaboration, and adaptability in their architecture management processes.

Cont. .How to Choose the Best Enterprise Architect Tools?

5. Choosing Based on Team Size and Requirements

- The size and structure of your organization greatly influence which enterprise architect tools are most suitable.
- Smaller teams often require simplicity, while larger enterprises need scalability and advanced features to support complex systems. Here's how different team sizes benefit from specific tools.

a) Small Teams:

- Smaller organizations, or those with limited IT staff, should opt for tools like Ardoq or Bee360.
- These platforms offer intuitive interfaces and real-time collaboration, which prevent teams from being overwhelmed by unnecessary complexity.
- They are also scalable, ensuring that the tool can grow with the company.
- These tools provide essential functionalities without breaking the budget, making them ideal for smaller teams seeking efficient, cost-effective solutions.

Cont. .How to Choose the Best Enterprise Architect Tools?

b) Large Enterprises:

- For larger enterprises, more complex needs arise. Tools like Orbus iServer are ideal for such organizations, as they offer robust frameworks, extensive customisation options, and detailed reporting capabilities.
- These features allow large teams to manage multi-layered architectures, facilitate cross-department collaboration, and maintain consistency across various functions.
- A comprehensive tool like iServer helps large enterprises manage complexity while aligning technology strategies with business goals.

Key Advantages Of Using Enterprise Architecture Tools

- Enterprise Architecture (EA) tools offer a multitude of advantages for organizations navigating the complexities of modern business environments:

1. Enhanced Visibility and Understanding

- Enterprise Architecture tools provide a comprehensive view of an organization's IT landscape, helping stakeholders understand the interrelationships among various components.
- However, this visibility facilitates better decision-making by enabling a holistic comprehension of the entire [enterprise software development companies](#).

[4]. Steps for Choosing and Leveraging Enterprise Architecture Tools," A3Logics Editorial Team, A3Logics Blog, March 2024. <https://www.a3logics.com/blog/steps-for-choosing-and-leveraging-enterprise-architecture-tools/>

Cont. ..Key Advantages Of Using Enterprise Architecture Tools

2. Improved Strategic Alignment

- These tools help align IT strategies with overall business objectives. Organizations can ensure that their technology investments directly contribute to the overarching strategic vision by mapping IT assets and processes to business goals.

3. Efficient Resource Management

- EA tools assist in optimizing resource allocation by identifying redundancies, inefficiencies, and gaps within the IT infrastructure.
- However, this leads to more effective use of resources, reducing costs and enhancing operational efficiency.

Cont. ...Key Advantages Of Using Enterprise Architecture Tools

4. Facilitates Change Management

- EA tools are vital in managing change in a rapidly evolving business landscape.
- Moreover, they provide a structured approach for assessing the impact of proposed changes, enabling organizations in digital transformation in healthcare to implement modifications smoothly while minimizing disruptions.

5. Risk Management and Compliance

- Enterprise Architecture tools aid in identifying and mitigating risks associated with IT systems.
- They also help ensure regulatory compliance by providing insights into how IT processes adhere to industry standards and regulations.

Cont. ...Key Advantages Of Using Enterprise Architecture Tools

6. Informed Decision-Making

- With the help of analytics and modeling capabilities, EA tools empower decision-makers with data-driven insights.
- Subsequently, this enables informed decision-making regarding technology investments, upgrades, and other strategic initiatives of many [best custom software development companies](#).

7. Faster Solution Deployment

- By offering a clear understanding of existing systems and dependencies, EA tools expedite the deployment of new solutions.
- However, this agility is crucial in today's competitive landscape, where the rapid implementation of innovative technologies can provide a competitive edge.

Cont. ..Key Advantages Of Using Enterprise Architecture Tools

8. Supports Digital Transformation

- EA tools are pivotal in orchestrating this change as organizations undergo digital transformation.
- They help integrate new technologies seamlessly and align digital initiatives with the overall enterprise architecture.
- In conclusion, adopting Enterprise Architecture tools is instrumental in driving efficiency, managing complexity, and ensuring that our organization's IT infrastructure remains agile and aligned with its strategic goals.

Steps for Successful Implementation of Enterprise Architecture Tools



Summary

- Enterprise Architecture tools act as data-driven hubs that connect an organization's business strategy to its technical execution, helping manage resources, optimize processes, and guide decision-making.
- Tooling has evolved from traditional modeling environments (built around strict frameworks like TOGAF/Zachman using UML or ArchiMate) to cloud-native, business-focused SaaS platforms that prioritize automated visualizations and business-impact analytics over manual diagramming.
- Implementing these platforms establishes a centralized repository (single source of truth) which enhances visibility, reduces data redundancy, improves risk/compliance management, and accelerates solution deployment.
- Finding the best tool requires evaluating specific business dimensions: workflow fit, ease of use, cost, and the platform's capacity to scale (e.g., using technologies like Docker or Python for smooth integration).

Cont. ...Summary

- Use cases vary significantly; tech sectors favor highly flexible platforms, financial institutions look for data flow tracking for regulatory compliance, small teams need intuitive interfaces (like Bee360), and large enterprises require multi-layered framework support (like Orbus iServer).
- Modern selection leans heavily toward future-proof features such as AI-powered predictive analytics, entirely cloud-based accessibility, and real-time multi-user collaboration.
- Successful rollouts rely on a 4-step execution plan: defining clear objectives, assessing the current infrastructure state, securing stakeholder and executive buy-in, and selecting the final tool based on scale.

References

1. Enterprise Architecture Tools: An Easy Guide to Choosing the Best EA Software for Your Business," Leah Plotz, Ardoq, 2024. <https://www.ardoq.com/knowledge-hub/enterprise-architecture-tool>.
2. Enterprise Architecture Tools, Software and Platforms, Orbus Software Editorial Team, Orbus Software. <https://www.orbussoftware.com/resources/wiki/article/enterprise-architecture-tools-software-and-platforms>.
3. Top Enterprise Architect Tools, Mukesh Kumar, upGrad, 2025. <https://www.upgrad.com/blog/enterprise-architect-tools>.
4. Steps for Choosing and Leveraging Enterprise Architecture Tools," A3Logics Editorial Team, A3Logics Blog, March 2024. <https://www.a3logics.com/blog/steps-for-choosing-and-leveraging-enterprise-architecture-tools>.

