



Session 10

Case Study: Discussion of Tortuous Act in Traffic Law (2)

Subject: Tort Law
For English Language Based Bachelor of Law Program (ELBBL)
Lecturer: Dr. Phalthy Hap

1

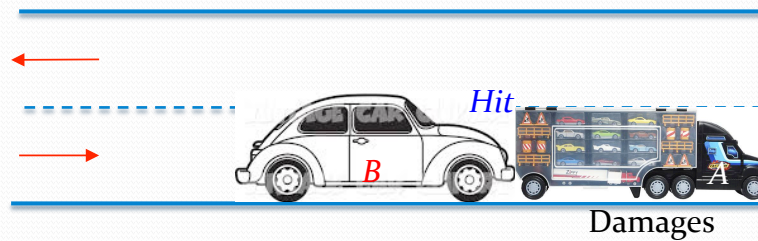
Outline

- Intersections
- Paralleled Road
- The car carrying goods

2

The Car Carrying Goods (1)

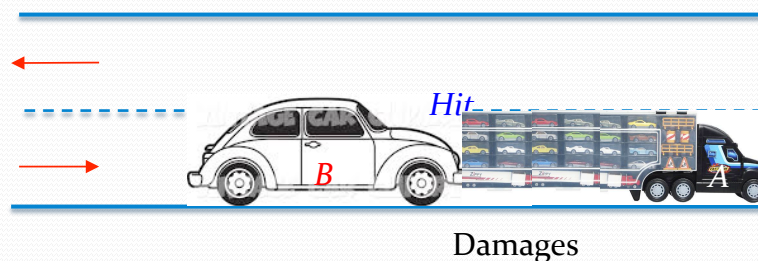
A's car carries goods on the way. *B* drives behind *A* and unfortunately slightly hit *A's* car and *A's* goods fell down on *B's* car causing damages. Discuss the liability.



3

The Car Carrying Goods (2)

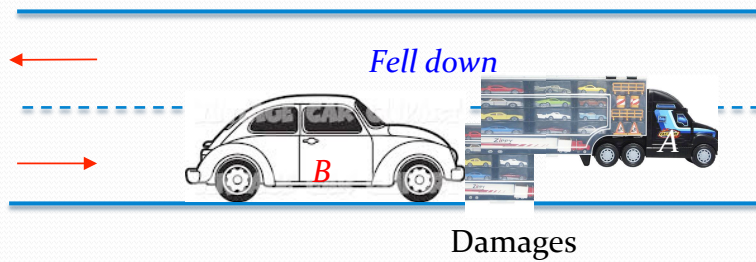
A's car carries goods on the way. *B* drives behind *A*. Unfortunately *A's* goods fell down on the way and then *B* hit it. Discuss the liability.



4

The Car Carrying Goods (3)

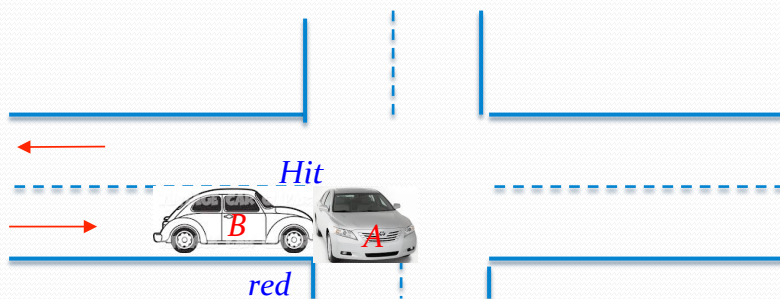
A's car carries goods on the way. *B* drives behind *A*. Unfortunately *A's* goods fell down on *B*. Discuss the liability.



5

Intersection (1)

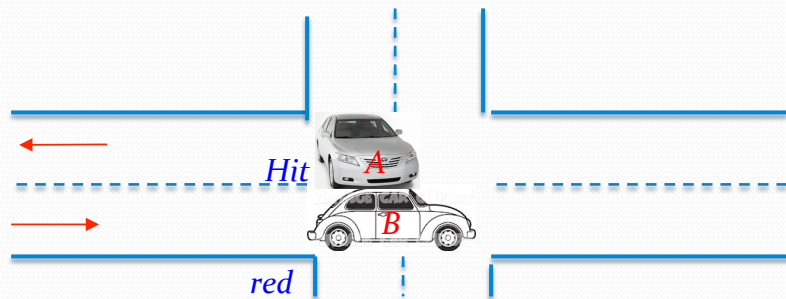
B with the red light hit *A* who comes across from the left to the right hand. Discuss the liability.



6

Intersection (2)

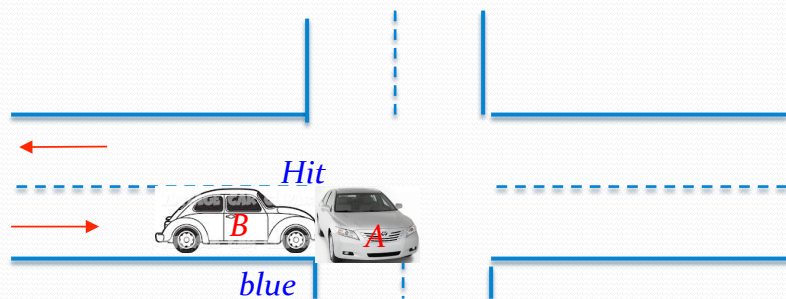
B goes across the red light. *A* who comes across from the left to the right hand and hits *B*. Discuss the liability.



7

Intersection (3)

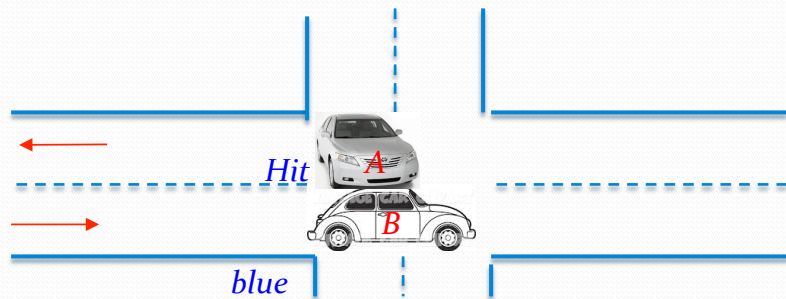
B with the blue light hits *A* who comes across from the left to the right hand. Discuss the liability.



8

Intersection (4)

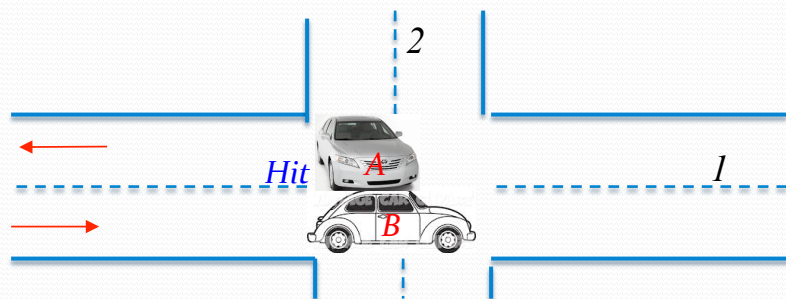
B with the blue light goes through. *A* who comes across from the left to the right hand hits *B*. Discuss the liability.



9

Intersection (5)

Road 1 has more priority over Road 2. *B* goes across the intersection unfortunately *A* hits *B*. Discuss the liability.



10

Intersection (6)

Road 1 has more priority over Road 2. *A* goes across the intersection unfortunately *B* hits *A*. Discuss the liability.

11

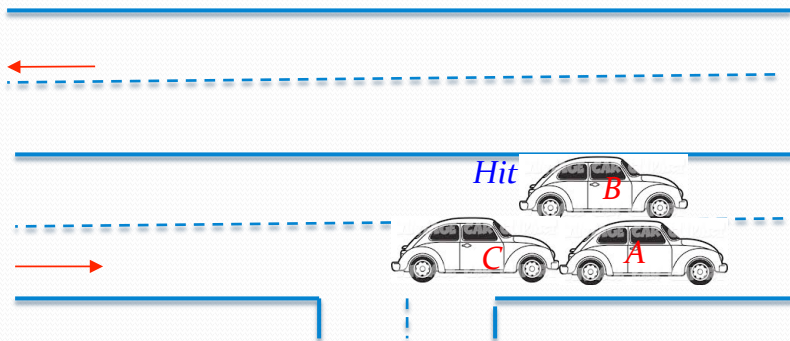
Same Direction (1)

Two same direction road. *A* comes before *B* but *B* takes over *A* and then *C* hits *B*. Discuss the liability.

12

Same Direction (2)

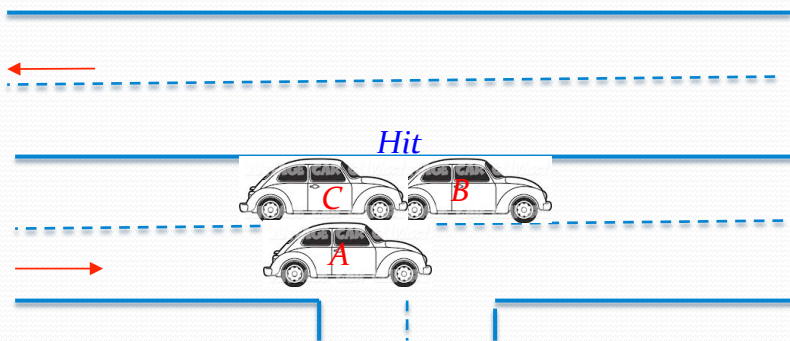
Two same direction road. *A* and *B* go in parallel direction but just different lanes. Then *C* hits *A*. Discuss the liability.



13

Same Direction (3)

Two same direction road. *A* and *C* go in parallel direction but just different lanes. Then *C* hits *B*. Discuss the liability.



14

Thank you!!!

Questions and Answers

Contact:

hphalthy@yahoo.com

www.phalthy.wordpress.com