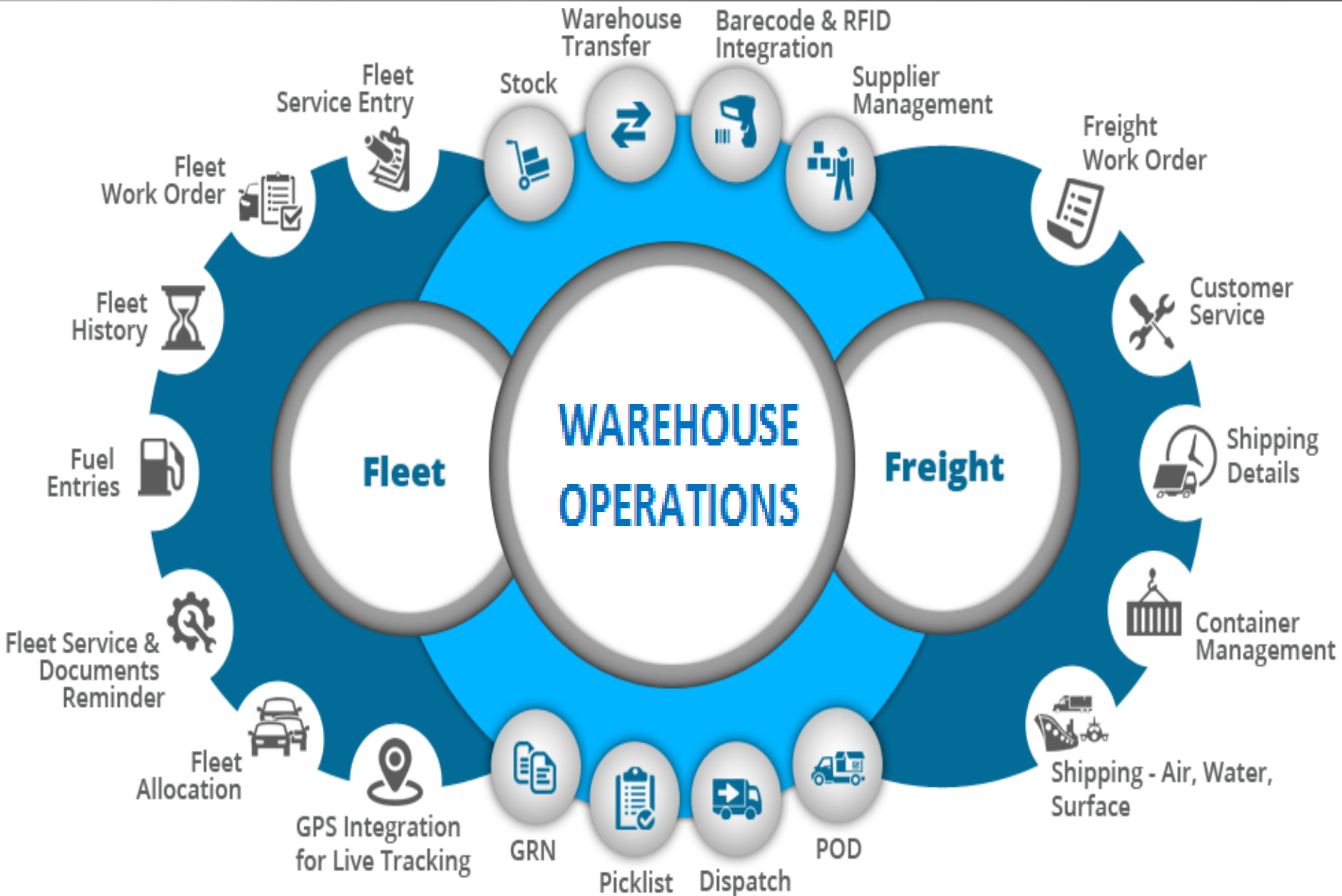


SUPPLY CHAIN MANAGEMENT



Warehouse Management in the Supply Chain



Rapid Implementation



SaaS

PaaS

IaaS



Hosted applications/apps

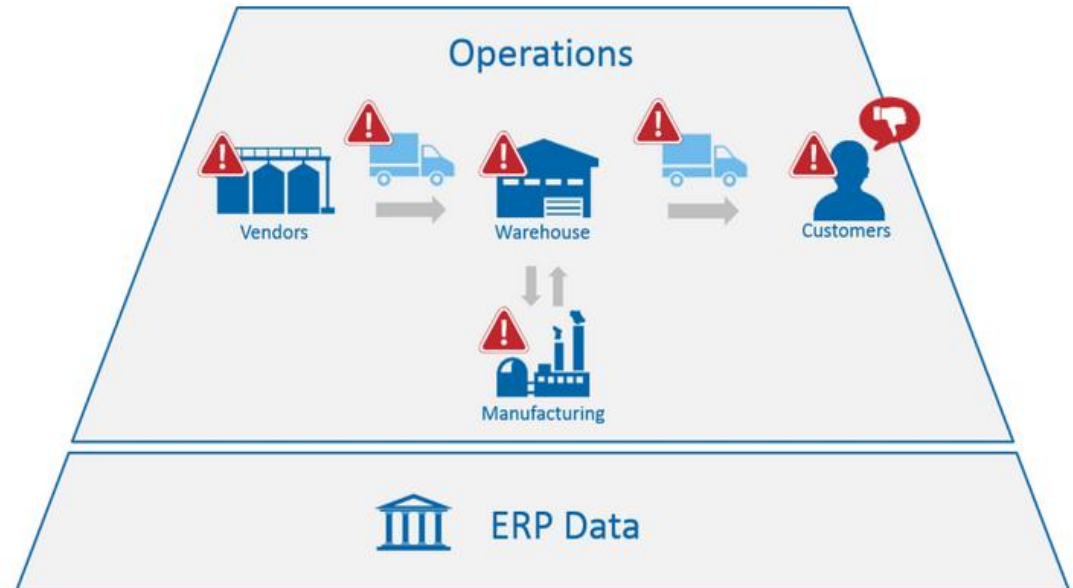
Development tools,
database management,
business analytics

Operating systems

Servers and storage

Networking
firewalls/security

Data center physical
plant/building



**Oracle Data
Management Cloud
Services that Provide**

True Enterprise
Scale

Complete and
Integrated Cloud

Simplified and Automated
Management

ORACLE
DATABASE
CLOUD SERVICE



Enterprise Scale



Proven Innovation



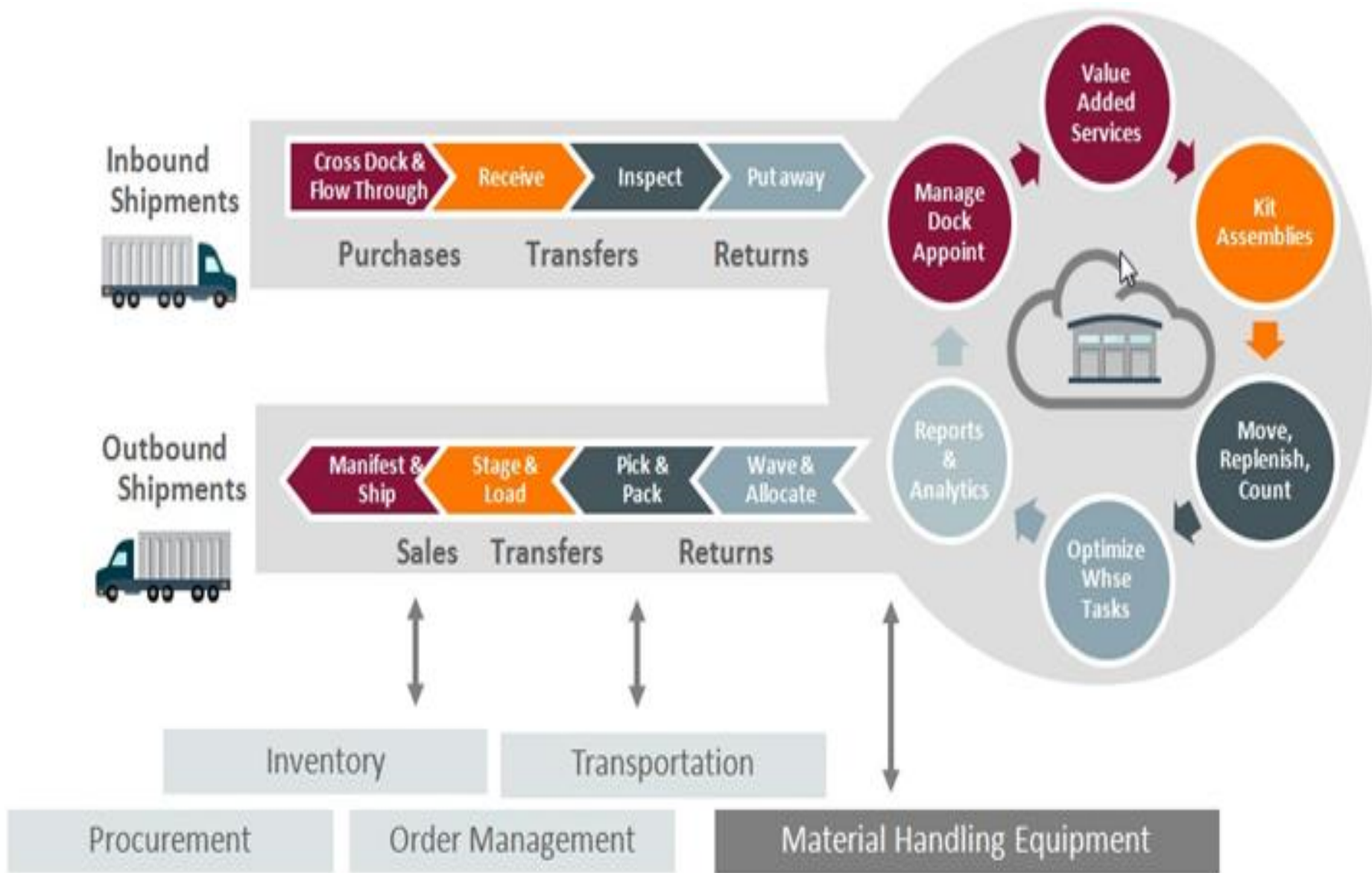
Full Hybrid Cloud Support



Enterprise Security

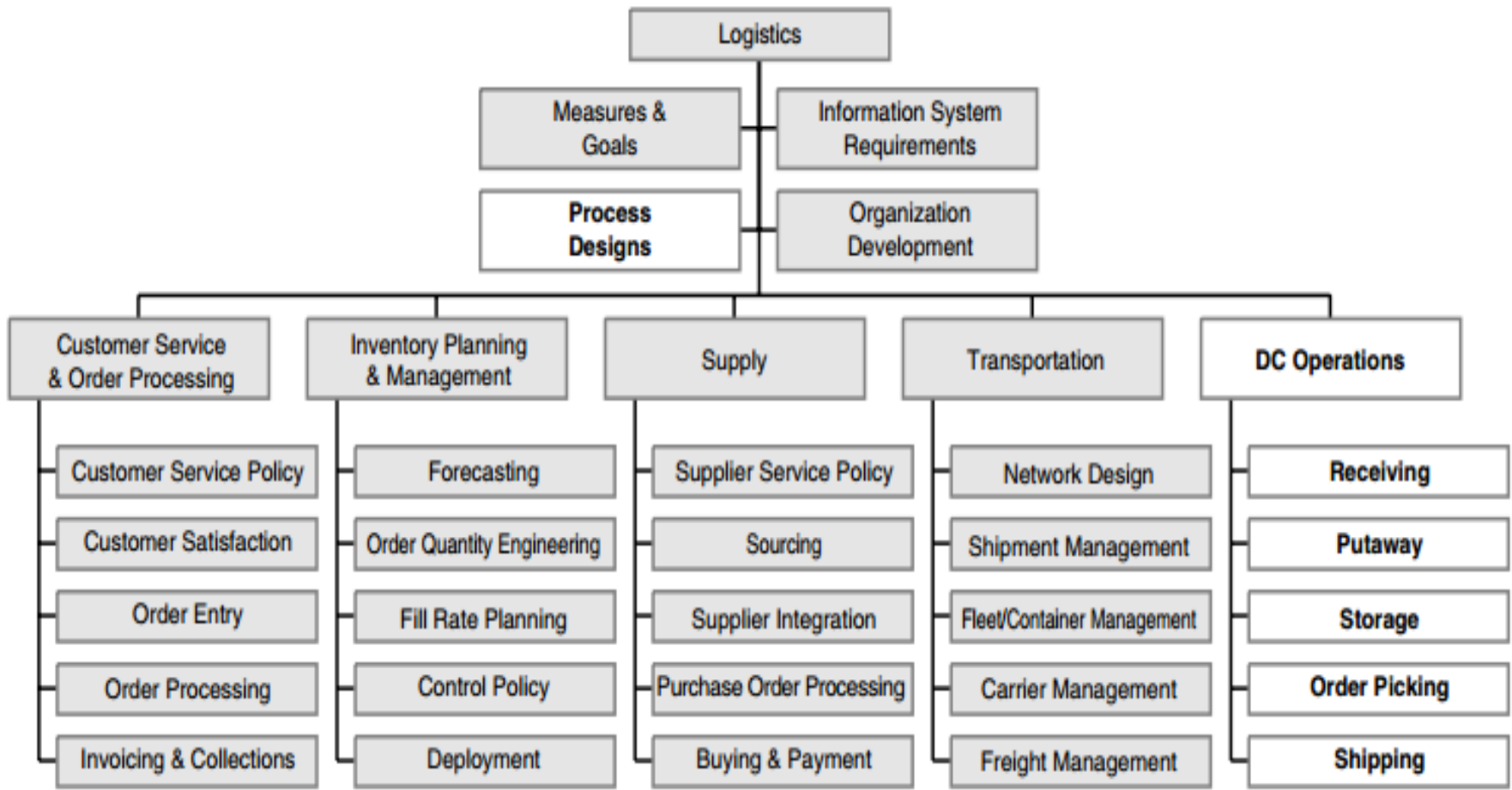


Complete-Integrated Offering



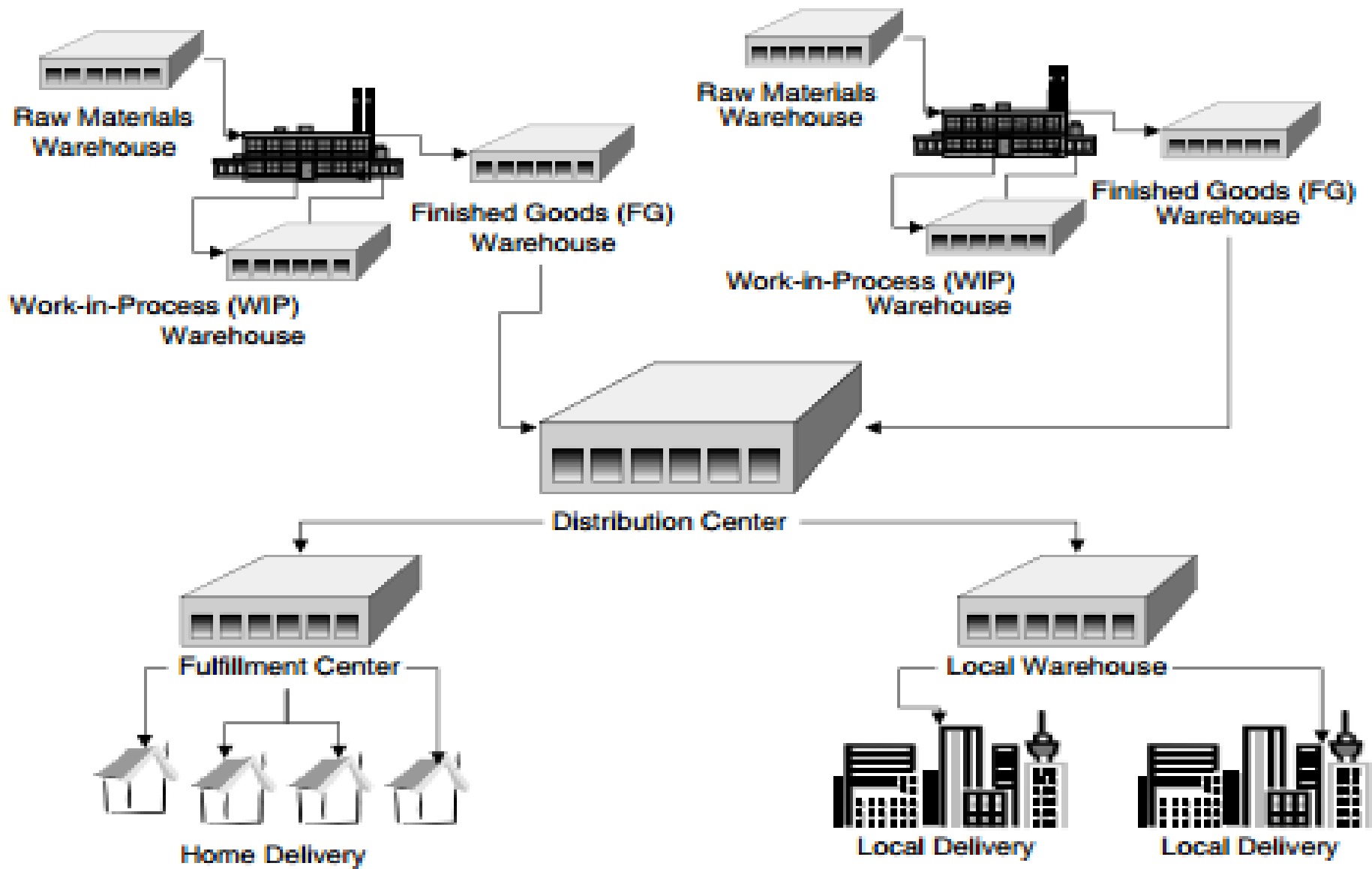


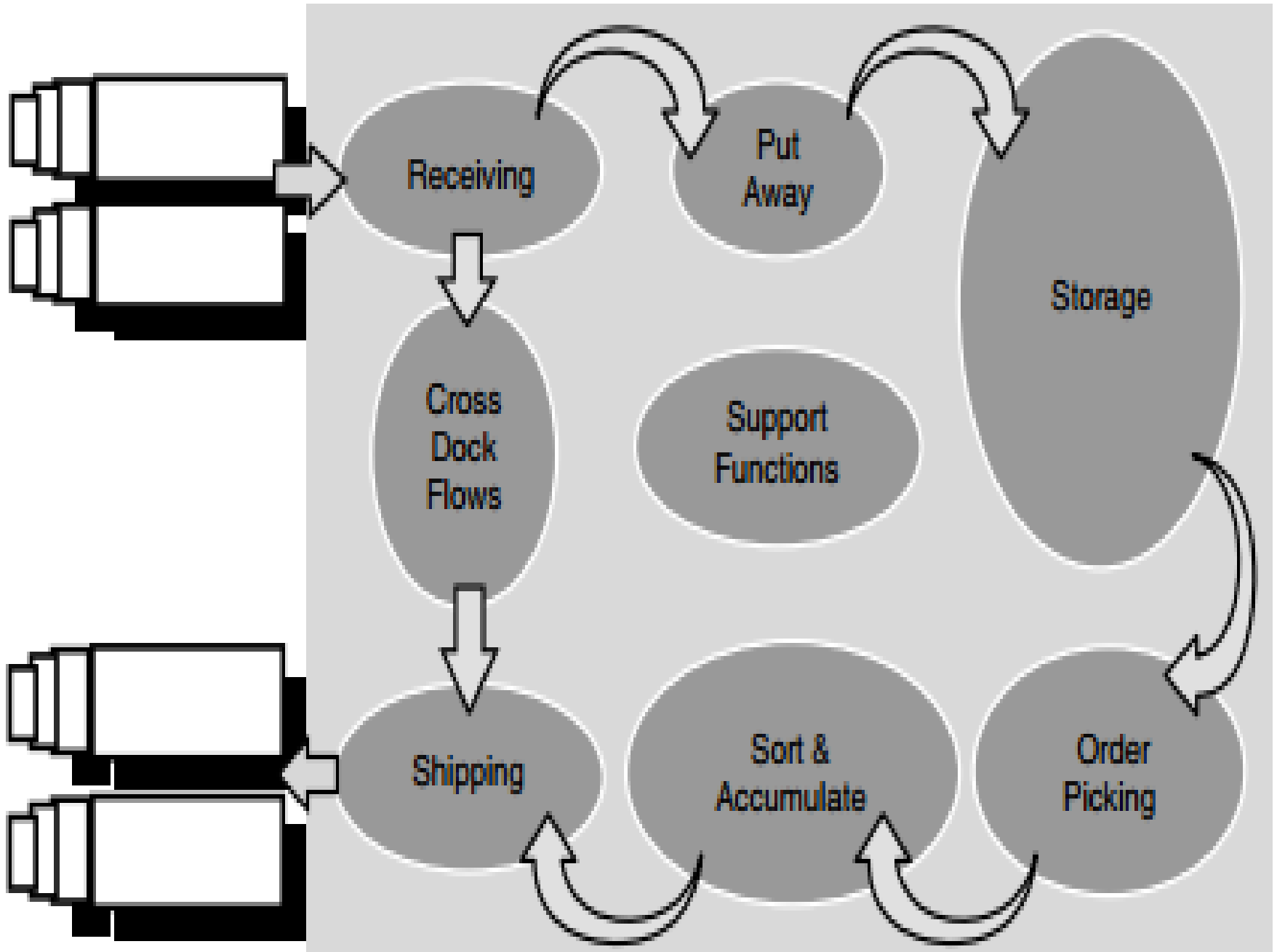
Warehousing in the logistics framework



Missions of a Warehouse

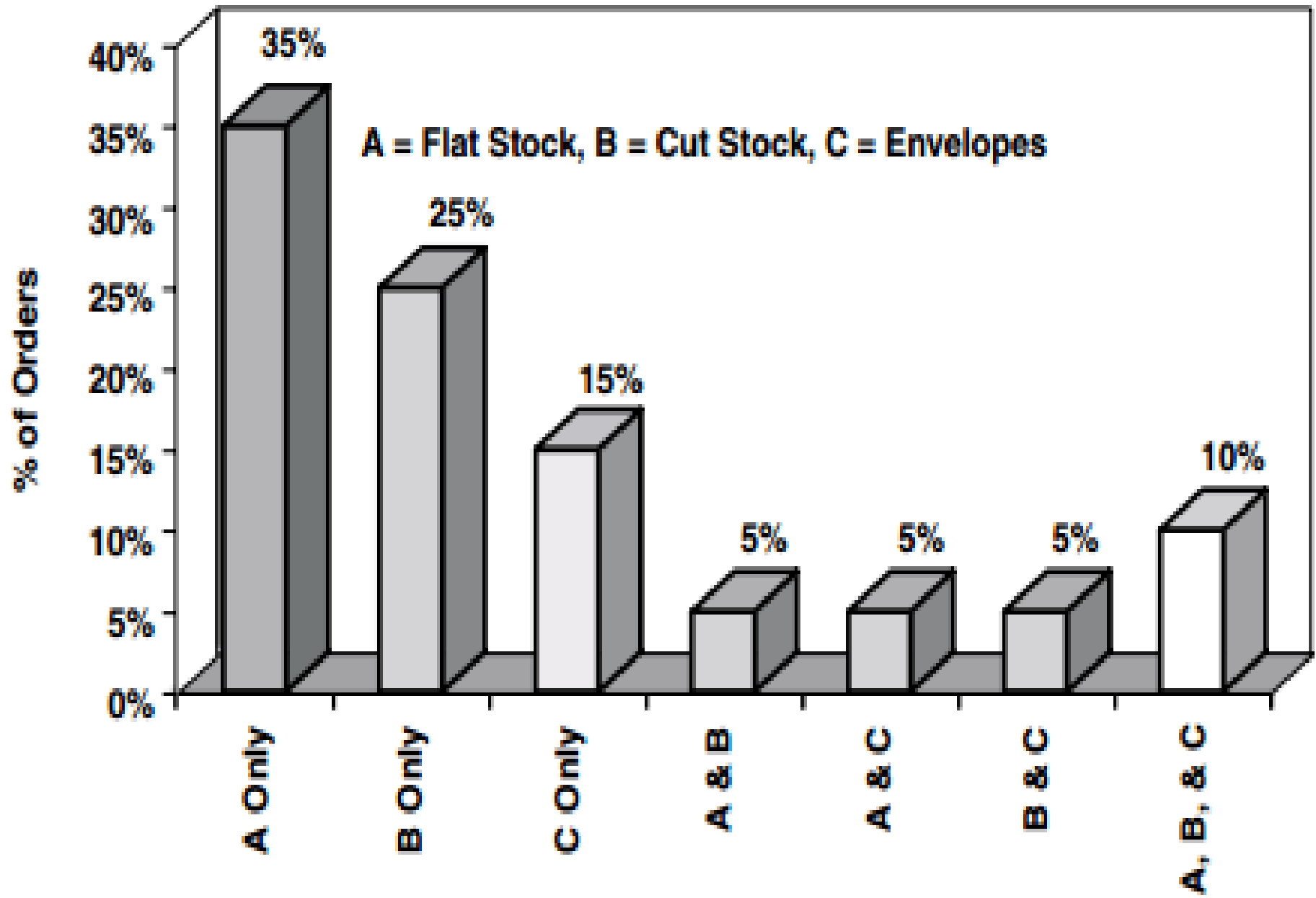
- ▣ **Raw material and component warehouses**
- ▣ **Work-in-process warehouses**
- ▣ **Finished goods warehouses**
- ▣ **Distribution warehouses and distribution centers**
- ▣ **Fulfillment warehouses and fulfillment centers**
- ▣ **Local warehouses**

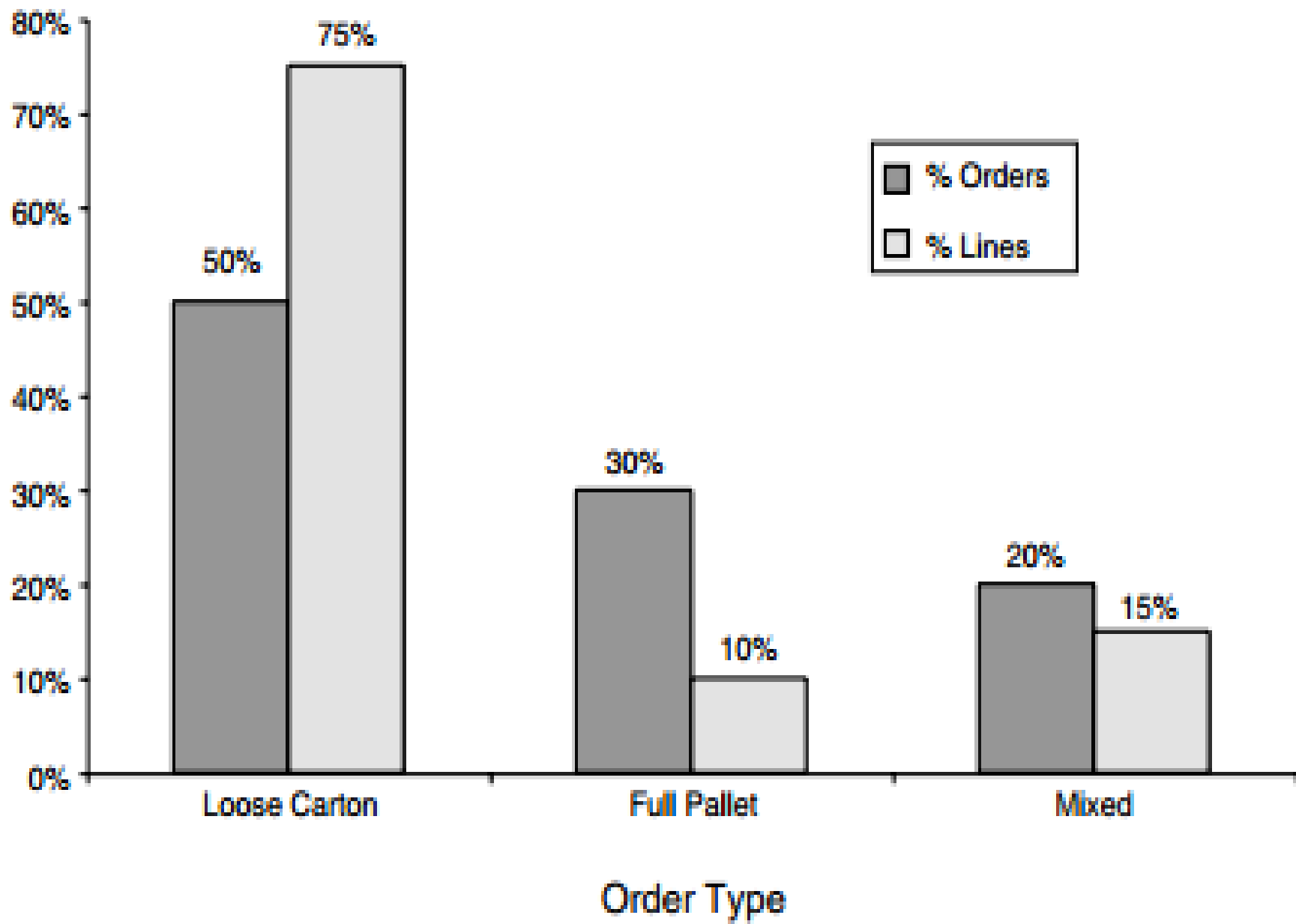




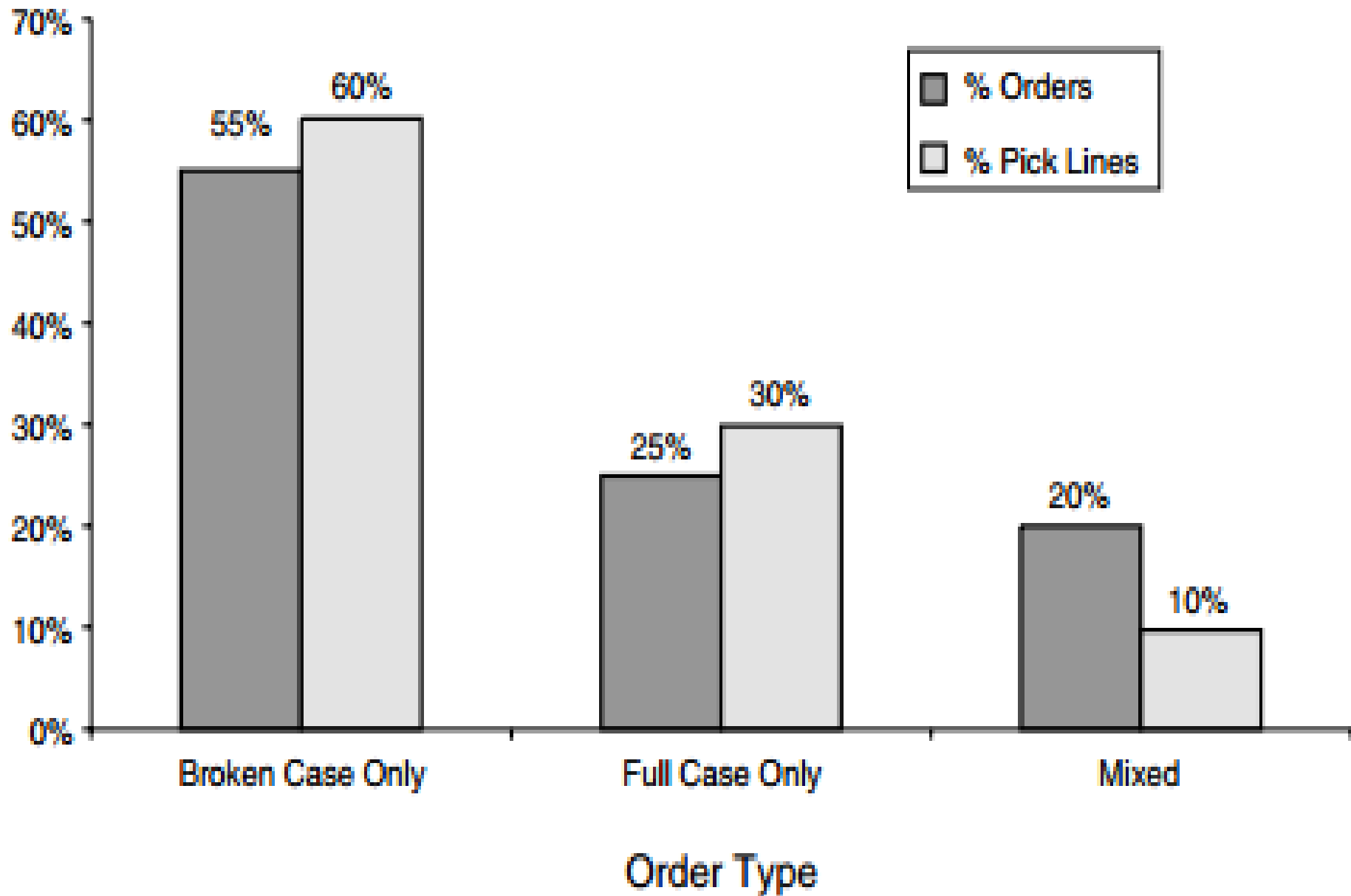
WAREHOUSE ACTIVITY PROFILING

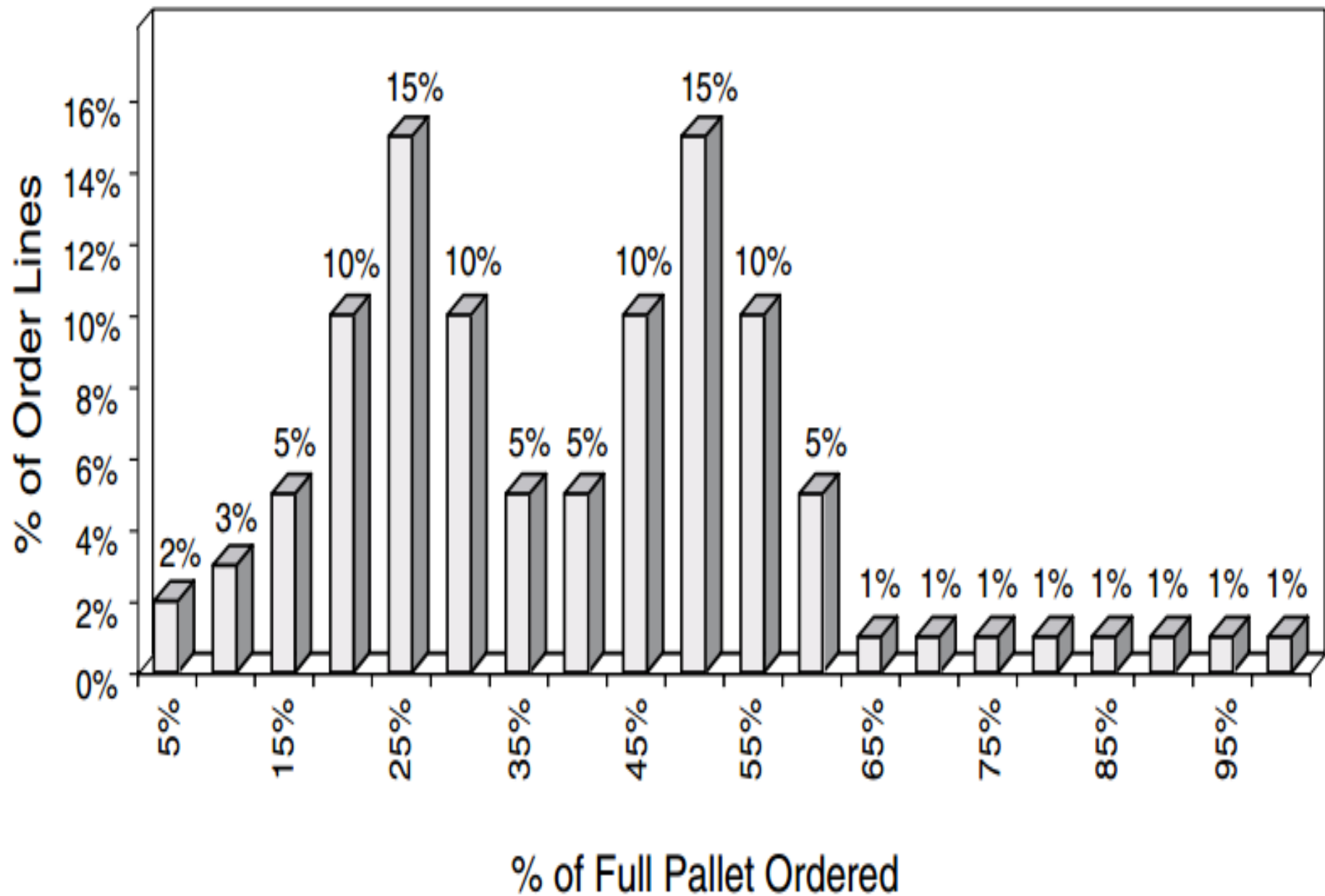
- Order mix distributions
 - Lines per order distribution
 - Cube per order distribution
 - Lines and cube per order distribution

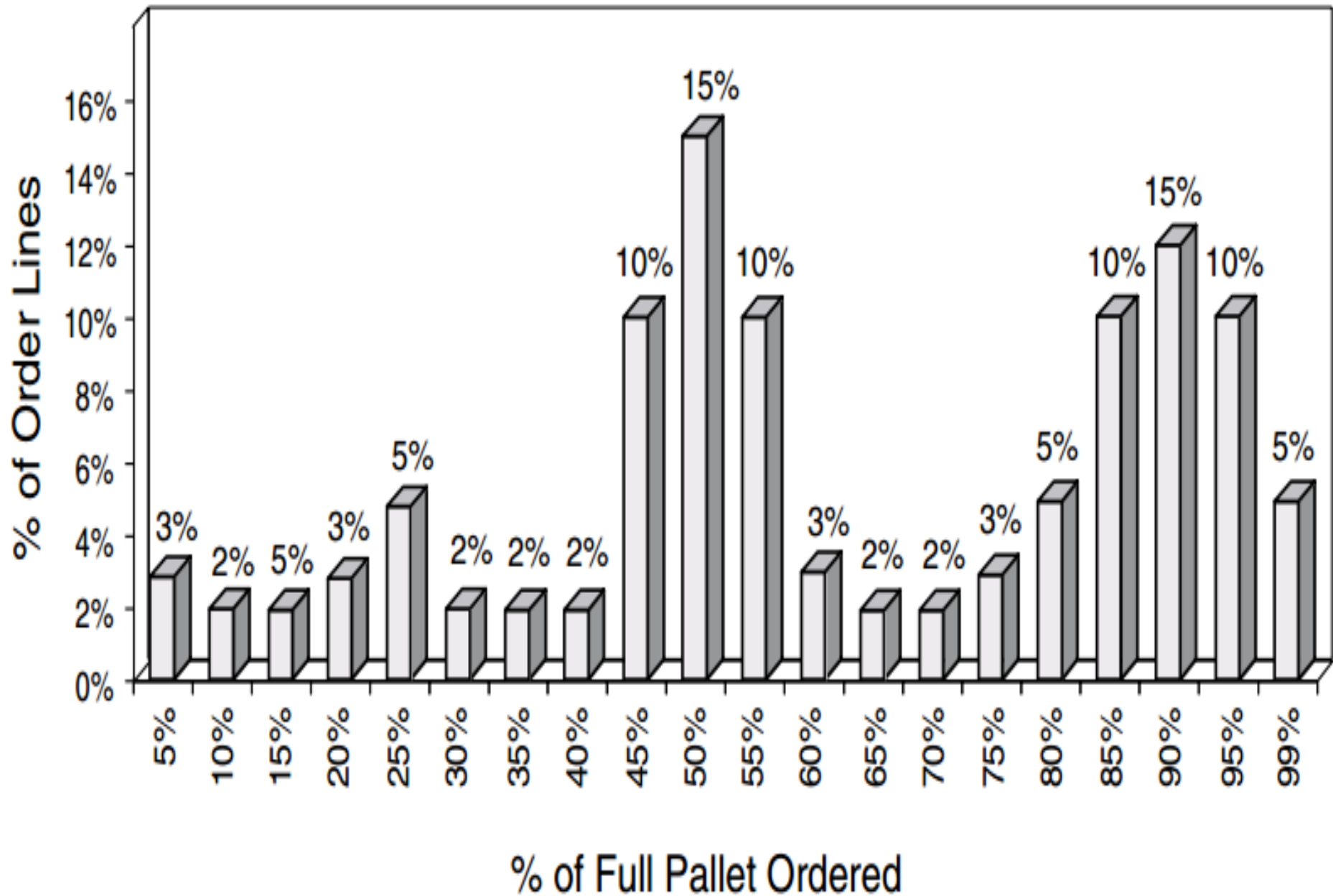




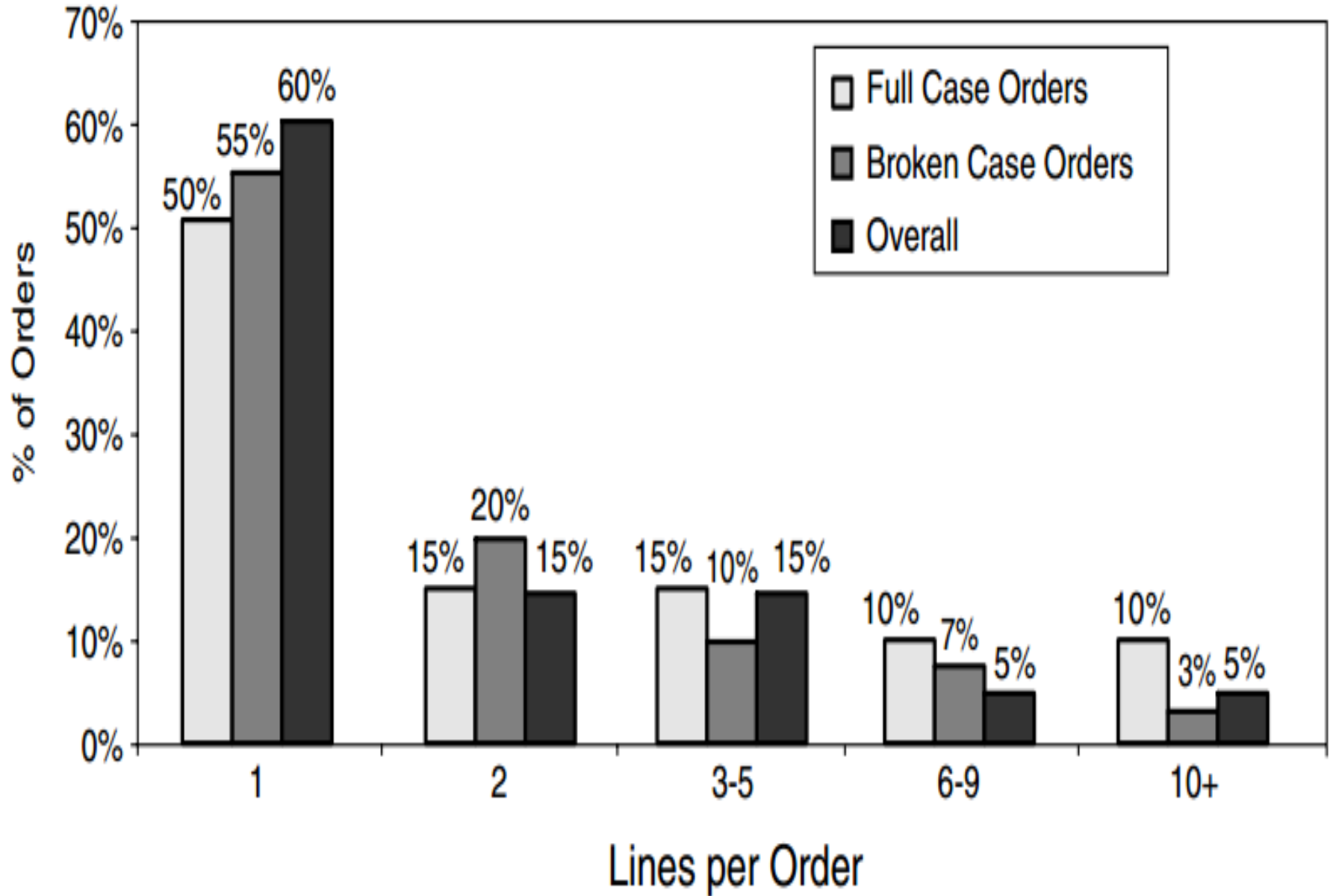
Source: E. Frazelle, McGraw -Hill, 2002



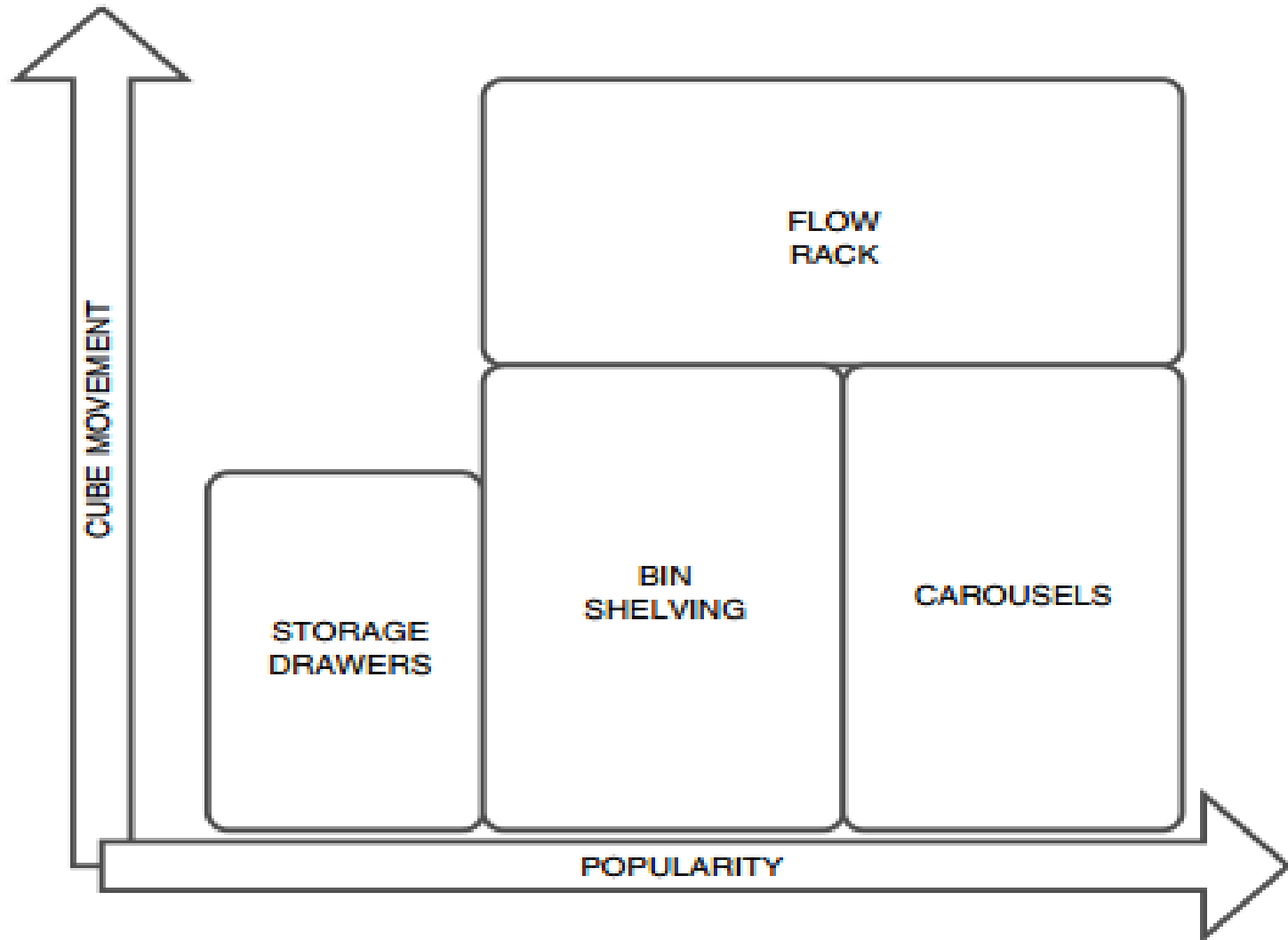




lines per order distribution



Popularity-cube-movement distribution for broken case picking

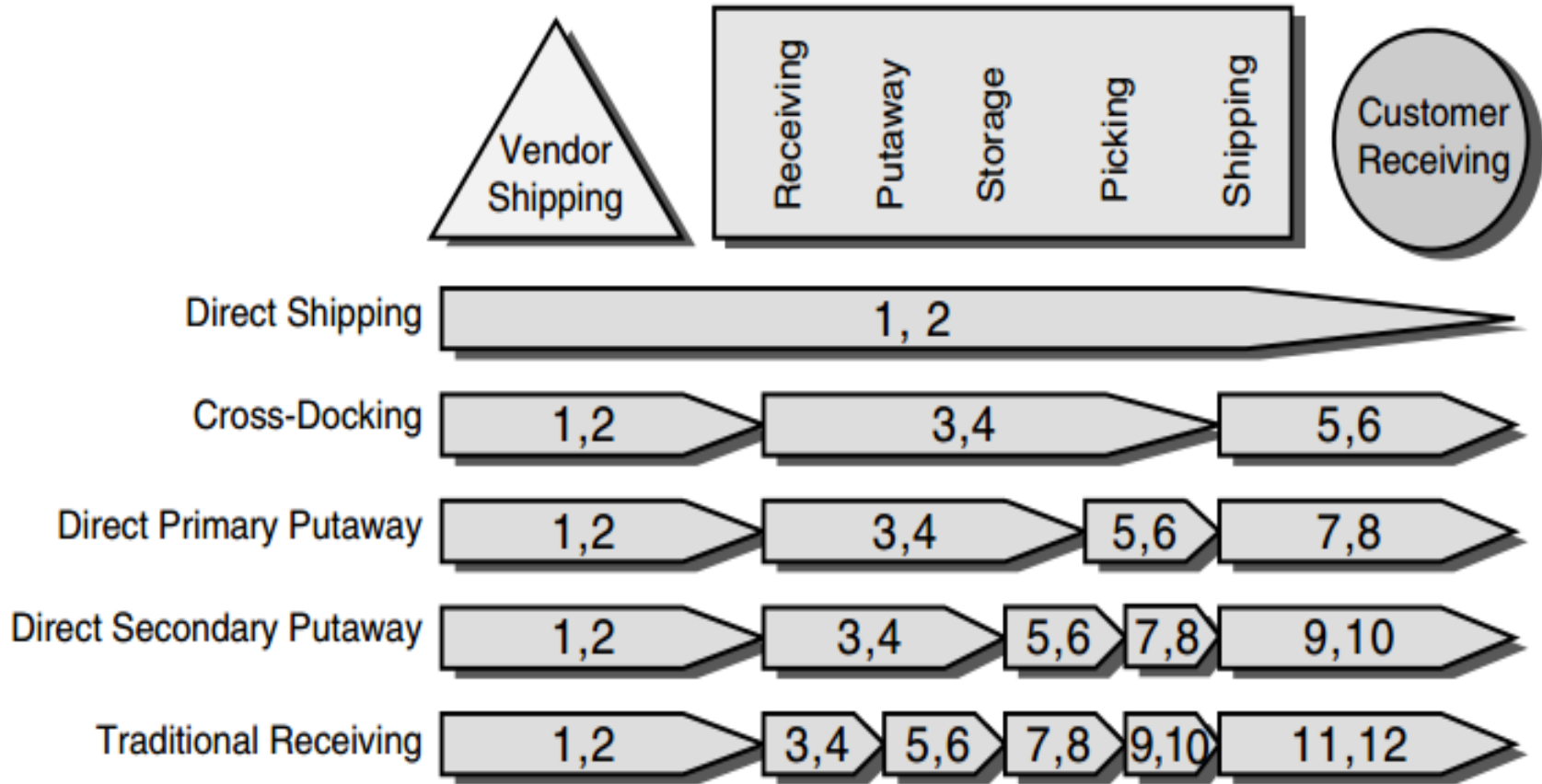


WAREHOUSE PERFORMANCE MEASURES

- ▣ Warehouse Financial Performance
- ▣ Warehouse Productivity Performance
- ▣ Warehouse Quality Performance
- ▣ Warehouse Cycle Time Performance

RECEIVING PRINCIPLES

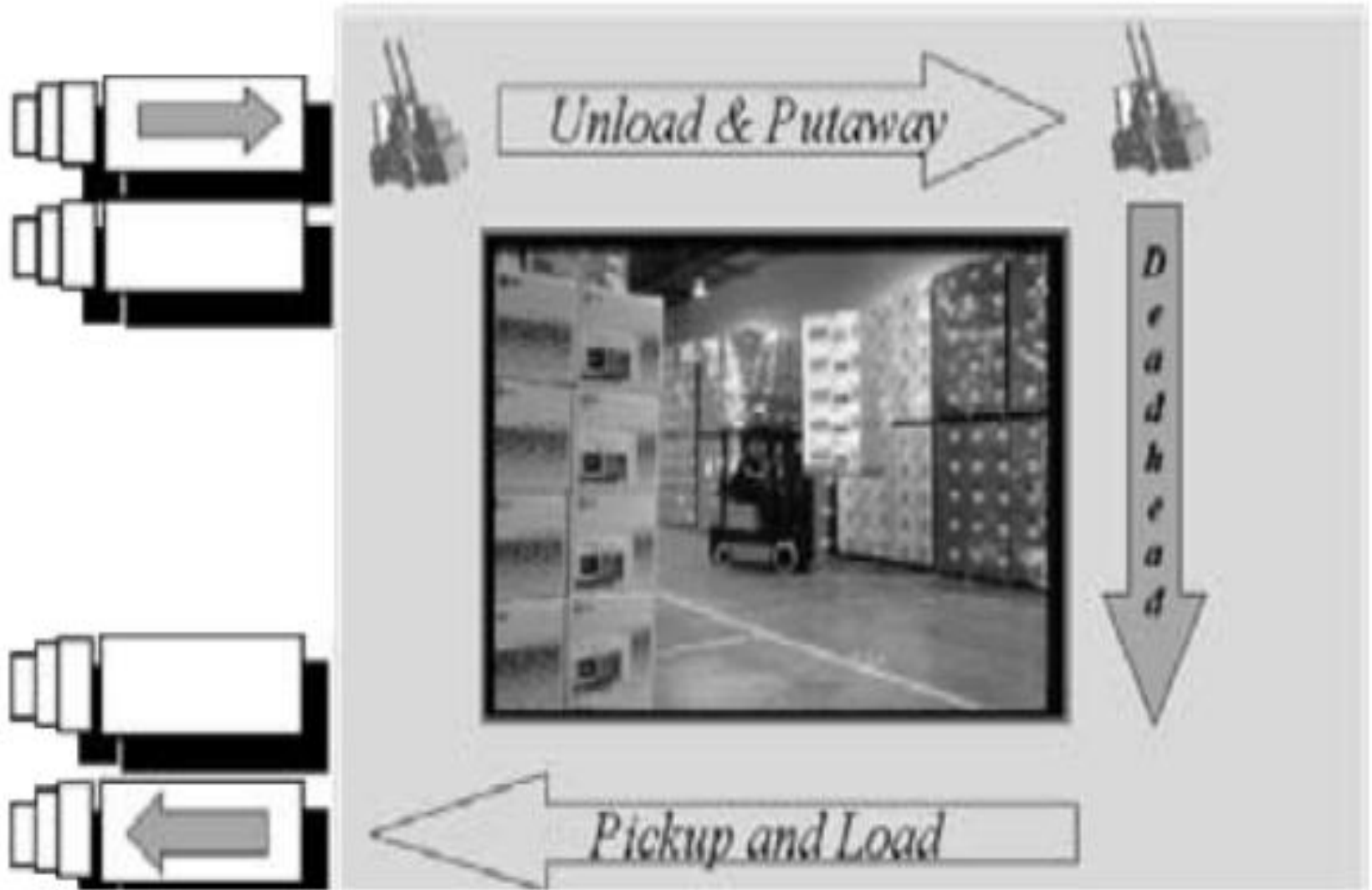
Touch analysis for alternative receiving practices



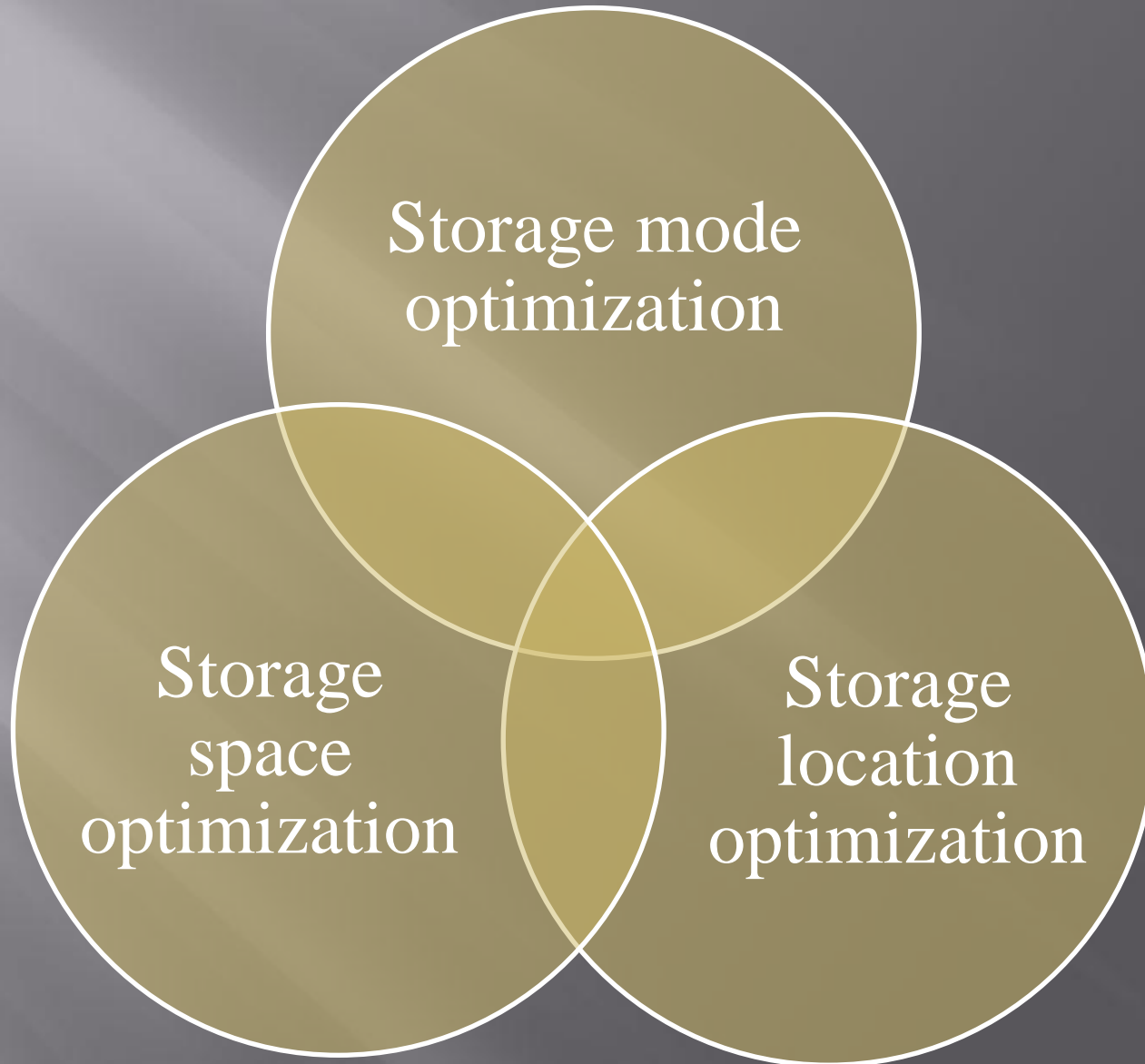




Interleaving concept

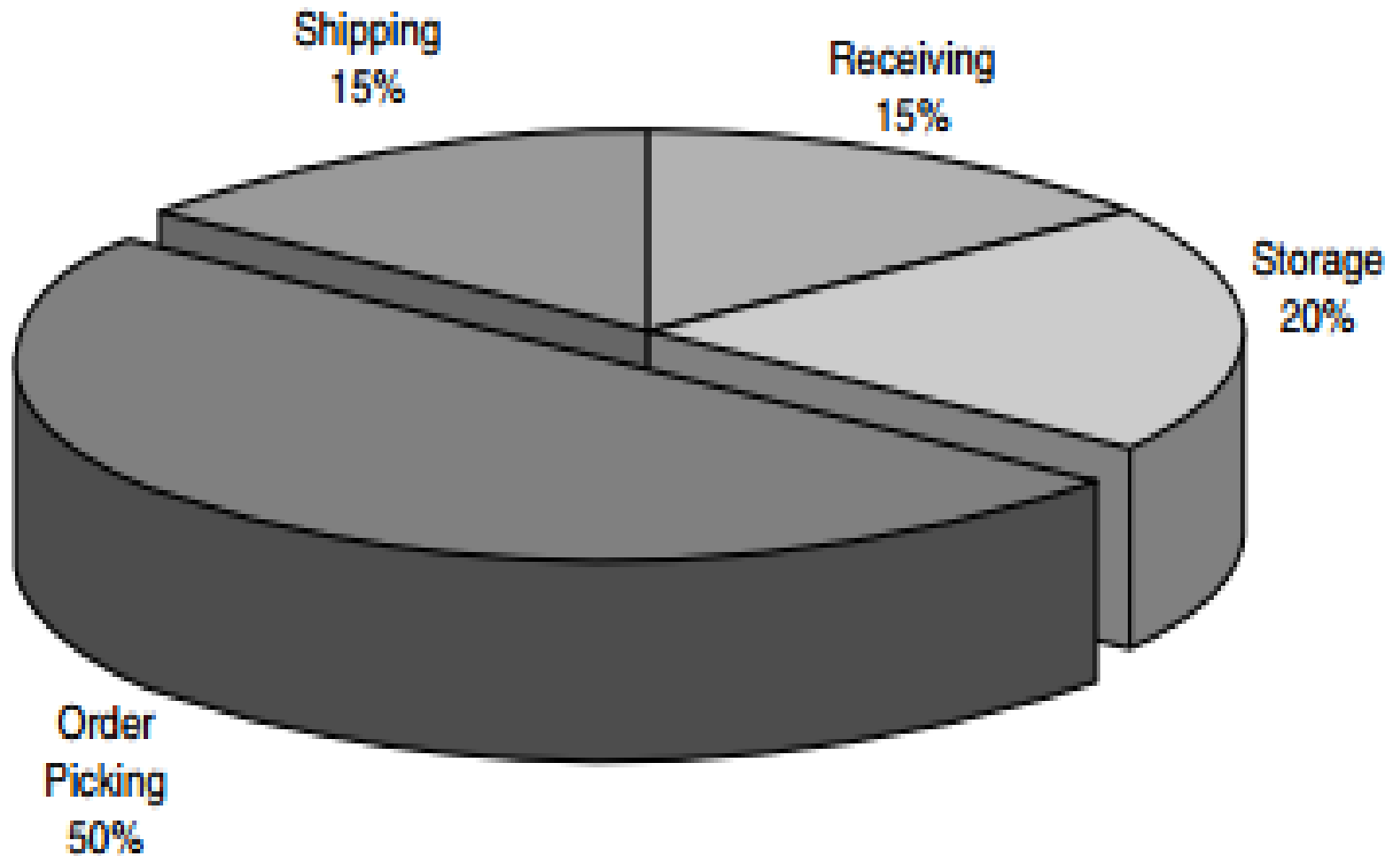


STORAGE OPERATIONS

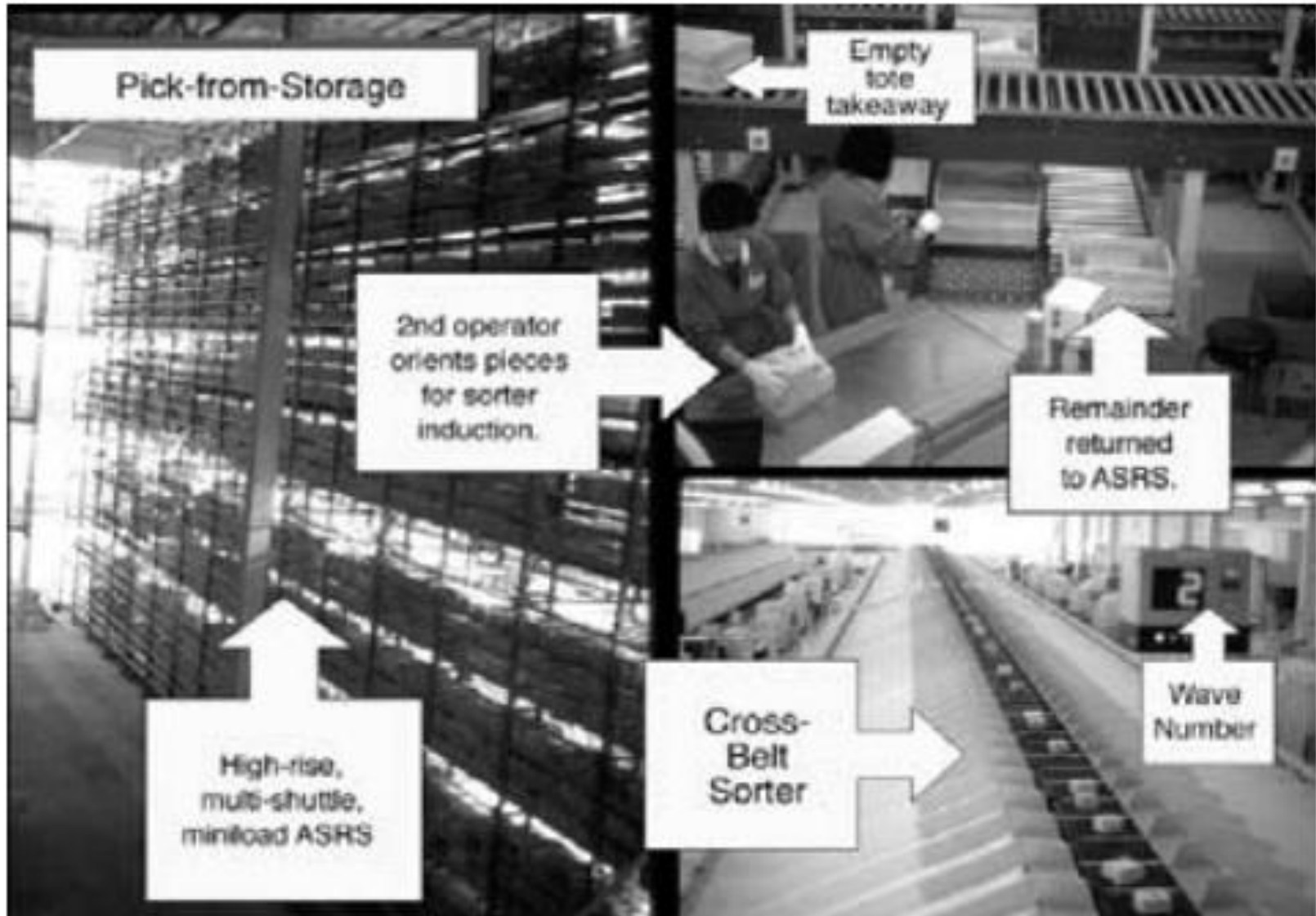


ORDER PICKING OPERATIONS

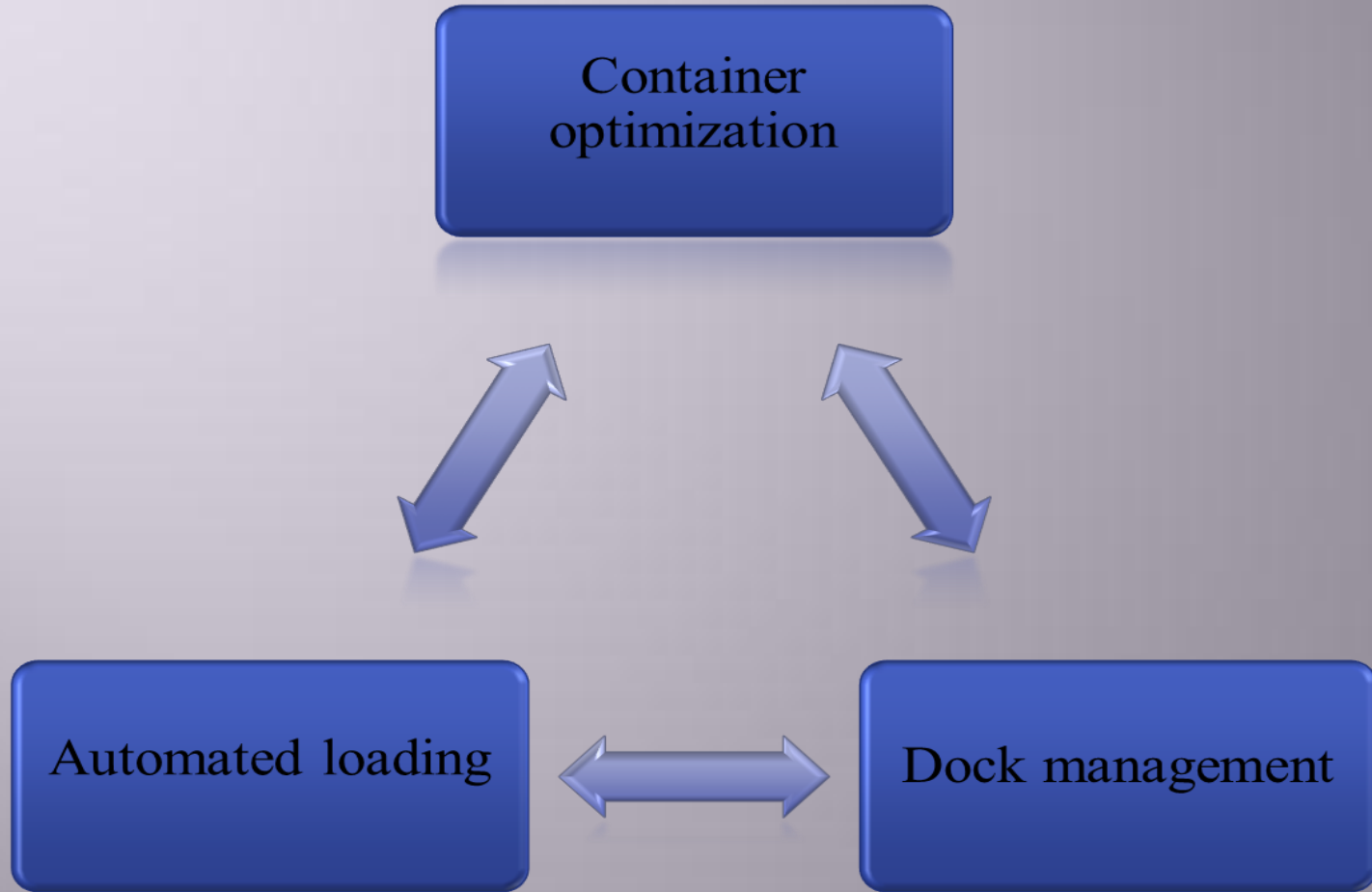
Operating cost distribution in a typical warehouse



Pick-from-storage concept



Shipping principles



THE END

mukhamkam@gmail.com